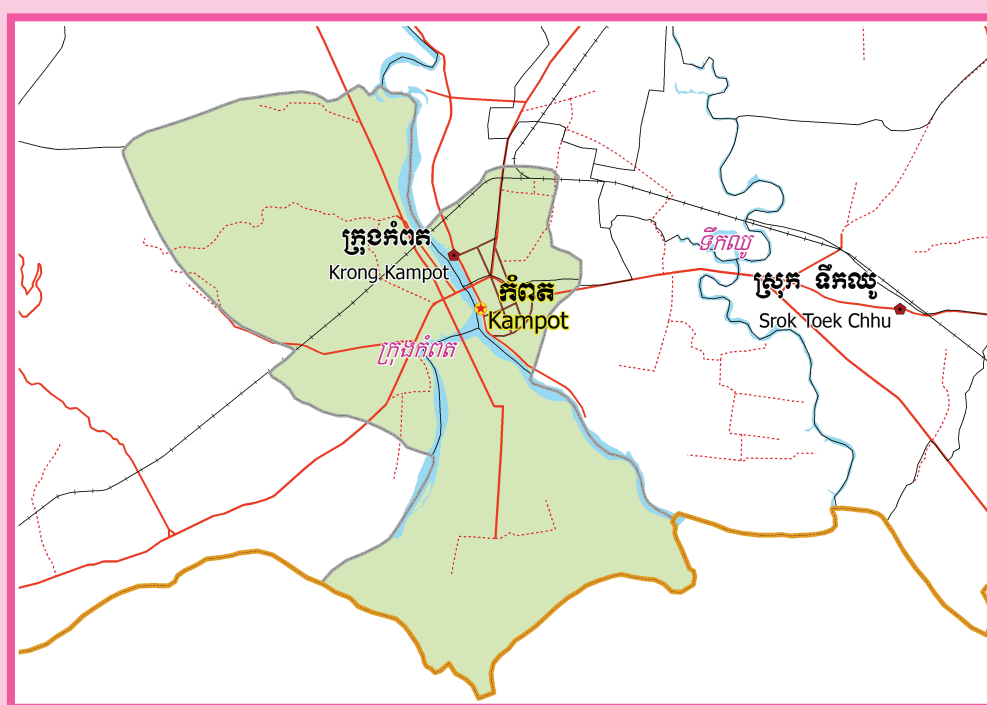


KINGDOM OF CAMBODIA
Nation Religion King



**National Committee for Sub-National
Democratic Development (NCDD)**



KAMPOT KRONG DATA BOOK 2009

Krong Code Nr: 708
Kampot Province

October 2009

Kampot Krong Data Book 2009

District Code Nr: 708

Kampot Province

Table of Contents

List of Abbreviations	i
Glossary.....	ii
Preface	vi
Introduction	vii
SECTION A: GEOGRAPHY	1
1 Administration and Infrastructure.....	3
2 Land Use and Natural Resources.....	5
3 Geography	7
3.1 Land Area	7
3.2 Distances between Offices	7
SECTION B: DISTRICT PROFILE	9
1 General Information	11
1.1 Population of the District.....	11
1.2 Occupations	12
1.3 Property	14
2 Infrastructure and Economy.....	16
2.1 Roads in meters over 3 years.....	16
2.2 Sewerage Pipes in meters over 3 years.....	16
2.3 Drainage and Bridges	16
2.4 Services in the District	16
2.5 Agriculture.....	17
3 Social Aspects	28
3.1 Education	28
3.2 Health.....	34
3.3 Water and Sanitation	36
3.4 Vulnerable groups.....	40
3.5 Migration	42
4 Natural Resources and Environment (NRE).....	44
4.1 Families involved with NRE issues over 3 years	44
4.2 Percentage of Families involved with Natural Resource issues, by Commune, for 2008	44
4.3 Percentage Houses with access to Garbage collection and Families affected by environmental Pollution, by Commune, for 2008	44
4.4 Percentage Families using chemical Fertilizer and chemical Pesticides, by Commune, for 2008 ..	45
5 Administration and Security	45

5.1	Birth Registration across 3 years.....	45
5.2	Number of unregistered Infants born in 2008, by Commune	45
5.3	Registered criminal Cases over 3 years	45
5.4	Registered criminal Cases per 10,000 people, by Commune, for 2008.....	46
5.5	Number of registered Land Disputes, by Commune, in 2008	46
6	Gender	47
6.1	Registered Domestic Violence over 3 years.....	47
6.2	Percentage of registered cases of Families experiencing domestic Violence, by Commune, in 2008	47
6.3	Women's involvement over 3 years.....	47
6.4	Percentage of Female Participants in Civil Society and of 18-60 year women with uncertain Jobs, by Commune, in 2008	48
6.5	Female-headed Households over 3 years.....	48
6.6	Percentage female-headed Households and with Children of less than 5 years old, by Commune, in 2008	48
7	Indigenous People in the District	49
7.1	Ethnic Minorities in the District over 3 years.....	49
7.2	Other Minorities in the District over 3 years.....	49
	SECTION C: PLANS AND PROJECTS	51
8	Priorities and Plans	53
8.1	Priorities of Commune Councils for 2009 in the District by Sector	53
8.2	Temporary Agreements by Commune, for 2009	56
8.3	Outputs, estimated and actual costs of C/S Fund Projects between 2005 and 2008, by Commune	63
8.4	Total Expenditure on C/S Fund Projects by sector and commune between 2005 and 2008.....	64
8.5	Actual 2009 C/S Fund projects by Commune	65
9	District level Projects from 2006 to 2009	66
9.1	District Initiative Infrastructure Projects from 2006 to 2009	66
9.2	District Initiative Service Projects from 2006 to 2009	67
9.3	Inter Commune Council Projects in 2008 and 2009	68
9.4	Other Projects in 2008 and 2009	70
	SECTION D: SERVICES AND ORGANIZATIONS	71
10	Infrastructure.....	73
10.1	Length of and Expenditure on Roads in 2008, by District	73
10.2	Scale of and Expenditure on Irrigation in 2008, by District.....	73
10.3	Power Supply in 2008, by District	74
11	Health Facilities.....	75

11.1 Health Facilities in the Province, by Operational District.....	75
11.2 Health Facilities and Staff in the province, by Operational District.....	75
11.3 Deliveries in 2007 in the Province, by Operational District.....	77
12 Education	78
12.1 Schools, Classes, Students, Staff, for for all levels, for 2007/2008 by District.....	78
12.2 Characteristics of Schools and School Principals for 2007/2008 by Commune	78
12.3 Enrolment by Level of Education, 2006/2007 by Commune	79
12.4 Enrolment by Level of Education, 2007/2008 by Commune	79
12.5 Aspects of Enrolment for 2007/2008 by Commune.....	79
12.6 School Buildings for all schools in the District for 2007/2008, by Commune	80
12.7 Conditions of Classrooms and Existence of Separate School Office and Library, by Commune	80
12.8 Community Participation and Financing across all schools in the District for 2007/2008 by Commune	80
12.9 Percentage Student Flow Rates and Graduation by level 2006/2007, by Commune	81
13 Staff and Resources at the District	82
13.1 District Councilors elected in 2009	82
13.2 Committees of the Council.....	82
13.3 Board of Governors.....	83
13.4 Offices under Sala Krong, Sala Srok and Sala Khan	83
13.5 Municipality/District/Khan line offices.....	83
13.6 Properties and Equipment of District Administration	84
13.7 Registered Revenue of the District Administration in 2008	85
13.8 Services in the District	85
13.9 Civil Society Organizations active in the District.....	85
13.10 Private Sector Organizations.....	87
SECTION E: POVERTY DATA	89
14 Data on Poverty	91
14.1 Predicted Poverty Rates for 2009, by commune	91
14.2 Poverty data from survey.....	91

List of Abbreviations

#	Number
AGR	Agriculture
BR	Birth Registration
C. Pilot	Piloted Commune
C/S	Commune / Sangkat
CBO	Community-Based Organization
CDB	Commune Database
CDPD	Commune Development and Planning Database
CIP	Commune Investment plan
CLTS	Community Led-Total Sanitation
Comm.	Commune
Com Cov	Commune Covered
CPA	Complementary Package of Activities
CPS	Community Preschool
CCWC	Commune Committees for Women and Children
DANIDA	Danish International Development Agency
DDLG	Democratic Development and Local Governance Project (EC-UNDP)
DFID	Department For International Development (UK)
DIP	District Initiative Project
DIS	District Information System
District PDRD	District Office of Rural Development
District WP	District Work Plan
DIW	District Integration Workshop
DoLA	Department of Local Administration
Dr	Doctor
DWRM	District Office of Water Resource and Meterology
ECD	Early Childhood education (part of PE)
EMIS	Education Management Information System
Event IC	Celebration of International Days
FDH	Former District Hospital
GTZ	German Society for Technical Cooperation (Gesellschaft für Technische Zusammenarbeit GmbH)
Ha	Hectare
HC	Health Center
HC (NB)	Health Center (no building)
HH	Headed Household
HSI	Intervention for Health
HP	Health Post
HW	Hand Washing
ICC	Inter Commune Council
IFAD	International Fund for Agricultural Development
IND	Industry
Inter-commune	Inter-Commune Project Management Committee or Inter-commune project
IO	International Organization
LASED	Land Allocation for Socio-Economic Development
LGCR	Local Governance for Children's Rights
M&E	Monitoring and Evaluation
MA	Medical Assistant
MoEYS	Ministry of Education, Youth and Sports
MoH	Ministry of Health

MoP	Ministry of Planning
MPA	Minimum Package of Activities
MW1	Primary Midwives
MW2	Secondary Midwives
n/a	Not available
NCD	National Contracts Database
NCDD	National Committee for Sub-National Democratic Development
NGO	Non-Governmental Organization
NRML	Natural Resources Management and Livelihood
NU1	Primary Nurse
NU2	Secondary Nurse
OD	Operational District
ODF	Open Defecation Free
Ope. Costs	Operational Costs
Others	Other Staff
PBW	Public Works
PDoEYS	Provincial Department of Education, Youth and Sport
PDRD	Provincial Department of Rural Development
PDWRM	Provincial Department of Water Resource and Meteorology
PE	Parenting Education
PHAST	Participatory Hygiene and Sanitation Transformation
PHD	Provincial Health Department
PID	Project Information Database
PMC	Project Management Committee
Pop 04-05	Population Covered 2004 or 2005
PSDD	Project to Support Democratic Development through Decentralization and Deconcentration
RRD	Rural Road Development
RH	Referral Hospital
RILGP	Rural Investment and Local Governance Project
RPRP	Rural Poverty Reduction Program
RuLIP	Rural Livelihoods Improvement Program
SIDA	Swedish International Development Cooperation Agency
SPPA	Senior Provincial Program Advisor
TBA	Traditional Birth Attendant
UNDP	United Nations Development Project
UNICEF	United Nations Children's Fund
Vil	Village
Vil Cov	Village Covered
VIL-HC	Distance from Village to Health Center
WASH	Water, Sanitation and Hygiene
WRM	Water Resource and Meteorology

Glossary

C/S Fund: The Commune/Sangkat Fund is established and managed by the Government of Cambodia to provide financial support for development projects and administrative costs of Commune/Sangkat Councils. The amount is determined as a percentage of the National Budget (for 2009: 2.8% over the 2008 budget) and is expected to increase gradually over the years. The total 2009 budget under this fund is \$ 27,643,902 (of which \$ 19,272,170 is for Development Projects and \$ 8,371,731 for Administration). Under the Rural Investment and Local Governance Project the World Bank currently reimburses the costs of development projects if these meet the Bank's criteria.

CDB: the Commune Data Base is a national database, compiled by the Ministry of Planning, on the basis of detailed questionnaires, completed at village and commune level, which are then sent to the Departments of Planning for data entry. The most recent round of data collection took place at the end of 2008 (and is reflected in the District Data Books). Commune, District and Provincial Profiles can be generated from this database and should be available from provincial Departments of Planning.

CDPD: the Commune Development and Planning Database is a database maintained by Departments of Planning and Ministry of Planning, recording proposed activities as determined and prioritized by Commune and Sangkat Councils; the Temporary Agreements between these councils and supporting agencies, as decided at District Integration Workshops and details on projects that actually take place at commune, district and provincial levels.

CIP: The Commune Investment Plan is a rolling three-year plan, developed and decided by the Commune or Sangkat Council. It sets priorities and identifies the projects proposed for the years to come.

Commune and Sangkat (C/S): the Communes (in rural areas) and Sangkats (in urban areas) are the lowest and smallest units of local government. Councils are elected directly, once in five years, for the 1417 Communes and 204 Sangkats. In the C/S there are 14,119 villages, which have Village Chiefs, but don't constitute a formal level of local government.

DIP: the District Initiative Project is jointly supported by the MDLF (Multi-Donor Livelihood Facility (supporting the NRM&L Program)) and PSDD. In 2009 it covers 106 districts, 60% of the total in the country, with a budget of \$ 3.2 million. It is focused on capacity development in planning, democratic development, public competitive procurement, financial management and service delivery.

DIS: The District Information System is a national database maintained by NCDD, recording resources, staff, revenue, infrastructure and equipment available in the 193 Districts and Khans throughout the country. The last update took place in July 2009.

District, Municipality and Khan constitutes the third level of Government in Cambodia. There are 159 rural Districts, 26 Municipalities and 8 Khans of Phnom Penh Capital. They all have Councils which were, for the first time, elected in May 2009, by the Commune/Sangkat Councilors. These councils have a mandate for 5 years.

DIW: District Integration Workshops are held between July and October, to bring Commune/Sangkat Councils, looking for support for their projects, together with the governmental and non-governmental agencies that may provide support.

ICC: Inter Communes Council projects are executed in 10 provinces under the Democratic and Decentralized Local Governance Project (DDLG). This five year project (2006-2010) is executed by Ministry of Interior and funded by the European Commission and UNDP. The project focuses on improving dialogue partnership and accountability; create a network of Commune Councils at the provincial and national level and support and contribute to local area development for poverty reduction. The work under the ICC component supports investments and services formulated through inter-commune dialogue and planning.

MEDiCAM: A non-profit and non-partisan membership organization for NGOs active in Cambodia's health sector. It is the primary networking agency for health-related NGOs.

NCDD: the National Committee for sub-National Democratic Development is the inter-ministerial body charged with the implementation of the Organic Law (a key legislative document, adopted in 2008, outlining the envisaged decentralization). NCDD also channels substantial financial assistance by a number of Development Partners, to projects and programs at various levels. This amounted to over \$ 91 million in 2008. More information at: www.ncdd.gov.kh. This website also provides access to reports, manuals, legal documents, details on projects and more.

OD: the Operational Districts are the districts as defined and used by the Ministry of Health. These do not coincide with the 193 (Administrative) Districts and Khans, as used by all other RGC agencies. The Operational Districts are usually larger, and so there are 77 Operational Districts against 193 administrative Districts and Khans. However they do fit within the boundaries of administrative provinces.

PID: The Project Information Database is the database maintained by NCDD at national and sub national level, to follow all aspects of projects by Commune and Sangkat Councils, including the C/S Fund projects

Provincial Investment Fund (PIF)

The Provincial Investment Fund is allocated to all Provinces and Municipalities according to a population based formula. Part of the fund is earmarked for support to planning activities of the Provincial / Municipal Department of Planning; and to gender mainstreaming activities of the Provincial Department of Women's Affairs. The remaining "un-earmarked PIF" is allocated by PRDC to sectoral technical departments against established criteria and in response to proposals with prioritisation taking into account: priorities formulated by the CS Councils and aggregated by District into District Priority Activities Matrices (DPAM); alignment with national planning and poverty alleviation criteria, complementarity with other planned activities; and performance of the Department concerned in implementation of activities in previous years. With this provisional allocation, the Department then programs activities through the District Integration Process. Finally, the agreed activities, plus support costs amounting to no more than 25% of the total, are included in a sub-contract signed between PRDC and the Department, pursuant to the overall PSDD contract signed between NCDD and PRDC. Total budget has been around \$ 2 million per year.

Province: the 23 Provinces and Phnom Penh Capital City represent the 2nd layer of government. They vary in size, from very small, like Kep (approx. 36,000 people) and Pailin (approx. 70,000 people), or large but with small populations, like Mondulkiri (over 60,000 people), and Ratanakiri (over 153,000) to densely populated and large, like Kampong Cham (over 1.7 million people) and Kandal (approx. 1.4 Million people).

PSDD: the Project to Support Democratic Development through Decentralization and Deconcentration is funded by DFID (UK), SIDA (Sweden) and UNDP and runs from 2006 till the end of 2010 (including a one year extension). Annual budgets range from \$ 11 million to over \$ 18 million. The project provides core technical support to NCDD and to the provinces, financial support to the C/S Fund, District Initiative, Provincial Investment Fund and capacity building support through training, studies and advisory services.

RILGP: The Rural Investment and Local Governance Project is a World Bank funded project that provides substantial support to C/S Fund projects and to developing the required infrastructure, policies, systems and skills. It started in 2003 with a Loan for \$ 22 million for 2003-2007 and was then extended with a Grant of \$ 36 million for the period of 2007-2010. Discussions about a possible RILGP 2 are taking place between RGC and the World Bank.

RPRP: the Rural Poverty Reduction Project is a seven year project from 2004 till 2010, funded by IFAD and UNDP and implemented through the Ministry of Agriculture, Forestry and Fishery, supported by the Ministry of Interior and facilitated by NCDD. The project is active in the provinces Prey Veng and Svay Rieng and focuses on 120,600 households below poverty line. The objective is poverty reduction with the active participation of the poor through improved livelihoods, Strengthened capacity, Sustainable farming systems and natural resource management, new and/or rehabilitated infrastructure development, increase accessibly to technology, services and markets for their economic and social development.

RULIP: the Rural Livelihoods Improvement Project is implemented by the Ministry of Agriculture Forestry and Fisheries (MAFF)' Project Support Unit- PSU, with the NCDD playing the role of cooperating agency. Funded by IFAD and UNDP, the project will run till 2014. The target group consists of poor households who have little or even no land, few livestock or other assets and often many dependents. The main goal of the project is to directly or indirectly improve the livelihood systems, food security and incomes of a total of 33,900 rural poor, ethnic minority and female headed households in targeted village of Kratie, Preah Vihear and Ratanakiri provinces in a sustainable manner.

Seth Koma: The UNICEF funded Seth Koma program focuses on measurable action for children and women. During 2006 -2010 it is implemented in six provinces. Government and UNICEF pursue a set of inter-related goals, addressing critical stages of the life cycle of the child: a) Mothers have safe pregnancies and deliveries and healthy newborns; b) best possible start in life of infant; c) Children enter schools at the right age of six years; d) Children are protected from exploitation, abuse, violence, discrimination and other risks; and e) Youth and adolescents acquire life skills, express their views, participate in the decisions.

Preface

The Government of Cambodia attaches great importance to optimal use of scarce resources and to participatory planning and management at all levels. The Organic Law which was adopted in 2008 provides the legal context for further steps towards improving and decentralizing planning, management and monitoring, and towards greater accountability and transparency of institutions at sub-national levels.

The Government has established elected Councils at the sub-national levels, and we will progressively give them the responsibilities, together with the human and financial resources, to deliver a wide range of public services. They will be more democratic, more efficient, more transparent and accountable, better at addressing gender and other inequalities, and at fighting corruption. We recognize that development does not come from government alone; it needs the involvement of citizens, civil society and the private sector, and the new system will facilitate this.

A central element in this process is the availability of information on any aspect of development to all concerned parties. The newly elected Councillors at District and Khan level, line departments operating at these levels, but also NGOs, Development Partners, Commune Councillors and citizens throughout Cambodia need information on problems and requirements, resources and opportunities, services and agencies, plans and projects. They will need such information to better understand the present situation, set targets for the future, monitor progress, know what others are doing and to apply resources wisely and this is the reason the District Data books will be so valuable.

The District Data Books are a major step towards full transparency and towards informed planning and decision-making. They provide all available data at District, Khan, Commune and Sangkat level in easily accessible formats, in Khmer and English, through over 16,000 printed copies, CD-ROMs and the NCDD website.

This is the first time in Cambodia (and possibly in South East Asia) that such detailed information is made so widely available and NCDD should be commended for the hard work that has gone into this. We also thank the Ministry of Planning, which provided the detailed data of the Commune Data Base, the sectoral ministries and provincial authorities who contributed data and the Development Partners who provided financial support.

It is our sincere hope that the publication of the District Data Books will strengthen capacities, especially at district levels, for evidence-based development planning. We also hope that this information will deepen the understanding among Ministries, Provincial Authorities, Development Partners, NGOs and research agencies of the realities at commune and district levels.

We call upon all to use and distribute this information, complement or correct where appropriate and to contribute new data in the years to come.

Sar KHENG

Deputy Prime Minister, Minister of Interior and Chairman of NCDD

Introduction

Purpose

The purpose of the District Data Books is to bring together information on any aspect of life and development of Districts, Khans, Communes and Sangkat, together and make this widely available. The primary targets are the newly elected District Councilors, district level line departments, provincial agencies, Development Partners and NGOs operating at this level. They need detailed knowledge on current living conditions, natural resources, infrastructure, agriculture and other economic activities, current service levels, past and planned projects and available resources.

While much information exists on many of the above aspects, it is often hard to access that information and much is lost to reports, databases and statistics that are not widely shared. Data are often only available in one language and often out-of-date, and many reports cover only one sector or region.

We found that these problems are especially acute at the district level. Now that Districts are becoming a much more significant level of local government and development planning, there is an urgent need for wide-ranging data to be used for setting base-lines, planning and prioritizing, monitoring and learning.

Approach

We have attempted to identify and compile all available statistics, reports, maps and other data at district and/or commune level. From this we have selected information that is available for all or most districts, reasonably reliable and up-to-date, sufficiently detailed and of possible interest to development planners, decision makers, agencies and citizens.

The major sources of the information in these District Data Books are:

- a) The Commune Data Base information over the years 2006 to 2009 (the most recent data were collected late last 2008), as compiled by the Ministry of Planning
- b) Detailed information directly collected from the Ministry of Health, the Ministry of Education, Youth and Sports and (for maps) the Ministry of Land Management, Urban Planning and Construction
- c) The Project Information Database (PID) at NCDD (up-to-date)
- d) The Commune Development and Planning Database (CDPD) (up to date)
- e) The District Information System (DIS) (updated per Mid 2009)
- f) Direct data collection at provincial and district level on private sector, irrigation, roads, and electricity, through provincial agencies
- g) Medical data collected from MEDiCAM
- h) The ID Poor Project – for poverty data on a number of provinces and districts
- i) NCDD's work on predictive poverty rates
- j) Specific projects for outputs, plans and budgets (Seth Koma, RILGP, RPRP and ICC)

Limitations of the data

We are fully aware that the data we collected are not always complete, consistent or correct. While we have rejected information that was wrong or very incomplete, we decided not to aim for statistical and scientific perfection, but to include information that is useful, relevant

and comprehensive. We also accepted different sources for the same data as this may encourage discussion on the quality of the respective data.

We strongly encourage anyone who notes errors or incompleteness in these data to contact us and to share their data. We hope that the next round of producing such District Data Books can draw on wider sources and more complete data.

We encourage the District Administrations, who receive these data also in digital format, not only to use these for their planning and monitoring, but also to start correcting and updating these data and to share new data with NCDD for future use.

Contents

The information in the following pages is organized in five sections:

- a) **Geographical data:** this section provides maps on infrastructure and administration and on land use and natural resources management. These maps are also provided in large format to all Districts and Khans.
- b) **District Profile:** this presents wide ranging data, covering 2006 – 2009, at district and commune level, extracted from the Commune Data Base, but edited for better understanding.
- c) **Plans and Projects:** this section presents development priorities determined by Commune and Sangkat Councils, Temporary Agreements, outputs and expenditure of major projects at Commune and District level over 2006 – 2008 and plans and budgets for 2009.
- d) **Services and Organizations:** this section provides details on key infrastructure (roads, electricity, irrigation systems) and services in health and education at district and commune level. It also provides an inventory of resources at the District Administration, NGOs operating in the district and private sector agencies active in the district.
- e) **Poverty Data:** this section provides predicted poverty rates for 2009 for all districts and communes and detailed poverty data compiled and processed by the ID Poor project for those that have been covered by this project.

The future

It is our hope that this is the start of a longer-term process. We hope that a next edition of these District Data Books will offer more comprehensive, correct and up-to-date information. We hope that the District Administrations will not only start using this information, but also improve and update it. For this they are all provided with the full data set in digital format.

We invite agencies, projects and experts to send reports, statistics and maps that could be used for a next version to us and we invite all users of the District Data Books to inform us about errors, updates and inconsistencies. Please contact us through info@ncdd.gov.kh

We now invite you to browse through this data book. You may open this randomly or use the table of contents and go to the aspects that have your special interest.

We hope that you will be informed, surprised and assisted. We hope, above all, that this information will lead to a deeper understanding of causes and effects of poverty, to purposeful decisions on how to tackle those causes and to greater transparency in using scarce resources for the benefit of all.

Martin de Graaf
Program Advisor, PSDD/NCD

SECTION A: GEOGRAPHY

1 Administration and Infrastructure

Please see separate folder containing A3 maps.

2 Land Use and Natural Resources

Please see separate folder containing A3 maps

3 Geography

3.1 Land Area

Total Land Area (ha)	Forest Land Area (ha)		Cultivation Land Area (ha)	Construction Land Area (ha)	Other Land Area (ha)
	Total	Flooded Forest Area			
5400	2390	422	652	1358	1000

3.2 Distances between Offices

Location	Distance (Km)
From District Office to C/S Office of Sangkat Kampong Kandal	2
From District Office to C/S Office of Sangkat Krang Ampil	1
From District Office to C/S Office of Sangkat Kampong Bay	0.5
From District Office to C/S Office of Sangkat Andoung Khmer	2
From District Office to C/S Office of Sangkat Traeuy Kaoh	6

SECTION B: DISTRICT PROFILE¹

¹ All data in this section come from the Commune Database (CDB) unless otherwise specified. These include primarily new CDB data, collected late 2008, and some data from earlier years. Please note that percentages are rounded to the nearest whole number.

1 General Information

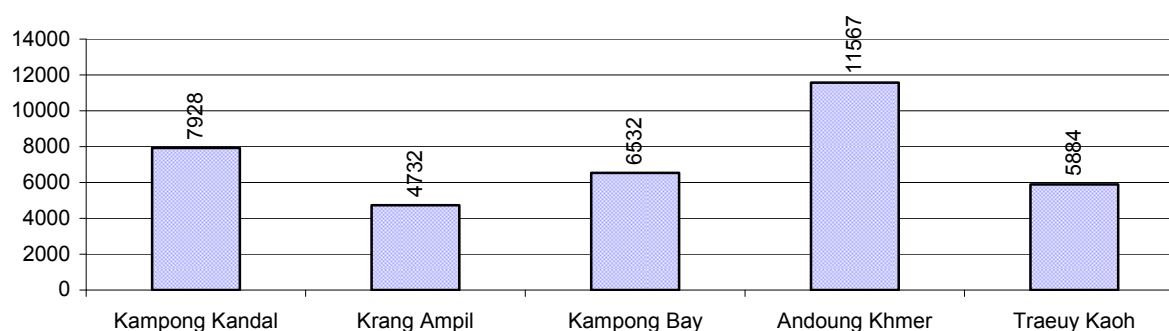
1.1 Population of the District

1.1.1 Total Population

Number of families	2005	2006	2007	2008
Total number of families	6,358 families	6,426 families	6,754 families	6,744 families
Increase (+)/Decrease (-) in nr of families		1%	5%	0%
Total population	35,097 pers	32,698 pers	36,143 pers	36,643 pers
Increase (+)/Decrease (-) in nr of people		-7%	11%	1%
Number of female Headed Households (HH)	1,222 families	1,693 families	1,672 families	1,757 families

Note: Percentages of population and increase/decrease are calculated on basis of the previous year. A negative sign in front of the percentage indicates a decrease in population.

1.1.2 Population, by Commune, in 2008



1.1.3 Population, by Age Group, over 3 years

Population by age group	2006	2007	2008	
	%	%	%	Number
Age 0-5 years (as percentage of the population)	9%	10%	11%	4,109 persons
Male 0-5 yrs	47%	51%	46%	1,900 persons
Female 0-5 yrs	53%	49%	54%	2,209 persons
Age 6-17 (as percentage of the population)	28%	27%	27%	9,883 persons
Male 6-17 yrs	50%	47%	48%	4,792 persons
Female 6-17 yrs	50%	53%	52%	5,091 persons
Age 18-60 (as percentage of the population)	58%	55%	55%	20,086 persons
Male 18-60 yrs	48%	48%	49%	9,796 persons
Female 18-60 yrs	52%	52%	51%	10,290 persons
Age 61 above (as percentage of the population)	4%	8%	7%	2,565 persons
Male 61	46%	47%	47%	1,211 persons
Female 61	54%	53%	53%	1,354 persons

Note: The overall percentage for each age group is calculated on the basis of the total population. The gender distribution of each group is calculated on the basis of the population within that particular age group.

1.2 Occupations

1.2.1 Percentage of families with a particular Occupation over 3 years

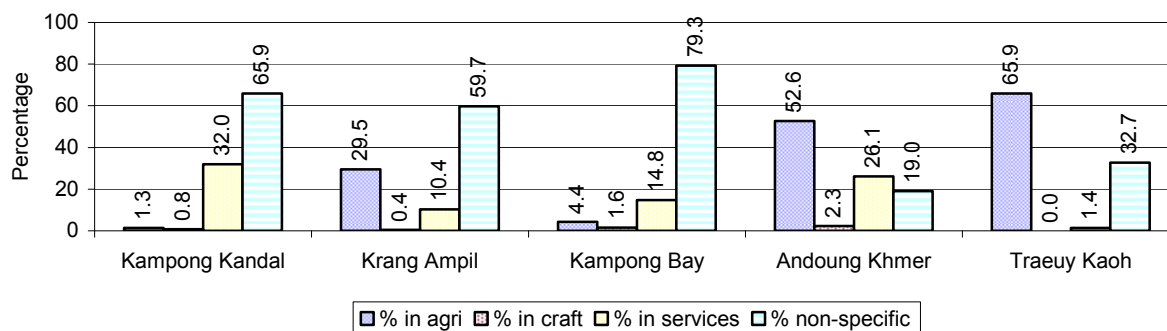
This table shows the percentage of the population who have a particular occupation (job), for example the percentage of the population in the district who are rice farmers, furniture crafter, trader, etc.

Description	2006	2007	2008	
	%	%	%	Number
Families whose main occupation is agriculture	38%	41%	33%	2,210 Families
Families whose primary occupation is rice farming	22%	24%	18%	1,206 Families
Families whose primary occupation is cultivating long-term crops	1%	2%	2%	123 Families
Families whose primary occupation is cultivating short-term crops	1%	2%	0%	18 Families
Families whose primary occupation is cultivating vegetable	0%	0%	0%	10 Families
Families whose primary occupation is fisherman	11%	11%	11%	717 Families
Families whose primary occupation is livestock farmer	1%	1%	1%	68 Families
Families whose primary occupation is NTFP collection	1%	1%	1%	68 Families
Families whose main occupation is craft work	1%	1%	1%	79 Families
Families, whose main occupation is in furniture craft, wooden, rattan, vine, bamboo	1%	1%	1%	45 Families
Families whose main occupation is in metal, aluminum, glass goods production	0%	0%	0%	19 Families
Families whose main occupation is food production	0%	0%	0%	8 Families
Families whose main occupation is tire, plastics and rubber goods production	0%	0%	0%	0 Families
Families whose main occupation is textile, clothing goods production	0%	0%	0%	0 Families
Families whose main occupation is in other production, not listed above	0%	0%	0%	7 Families
Families whose main occupation is services	14%	15%	19%	1,263 Families
Families whose main occupation is trade	3%	3%	3%	236 Families
Families whose main occupation is repair	2%	2%	1%	99 Families
Families whose main occupation is providing transport services	2%	1%	2%	142 Families
Families whose main occupation is providing other services	8%	8%	12%	786 Families
Families whose main occupation is not clear (or multi)	47%	43%	47%	3,192 Families

Note: The occupation percentages are calculated on the basis of the total number of families.

1.2.2 Percentage Families that work in one of four occupational sectors, by Commune in 2008

This table indicates the percentage of families involved in one of four occupation types: agriculture, craft, services or non-specific (other). Please note agriculture includes forestry activities such as cutting down trees and gathering gum from the trees.



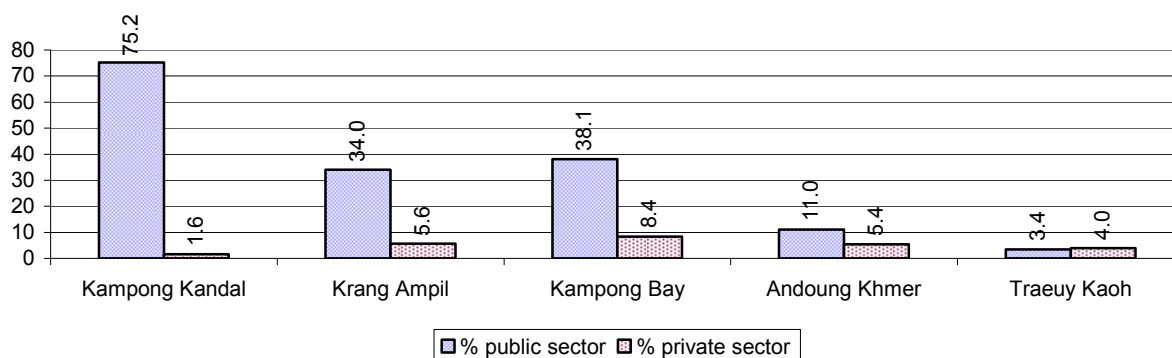
Note: Calculated on the basis of the total number of families within a commune.

1.2.3 Percentage of Families with public Sector, private Sector or uncertain Jobs, over 3 years

Description	2006	2007	2008	
	%	%	%	Number
Families that have a family member who is a government official, staff or worker	27%	30%	31%	2,097 families
Families that have a family member who is a private sector staff or worker	4%	4%	5%	327 families
Number of people aged 18-60 with uncertain/irregular jobs	4%	6%	4%	863 persons

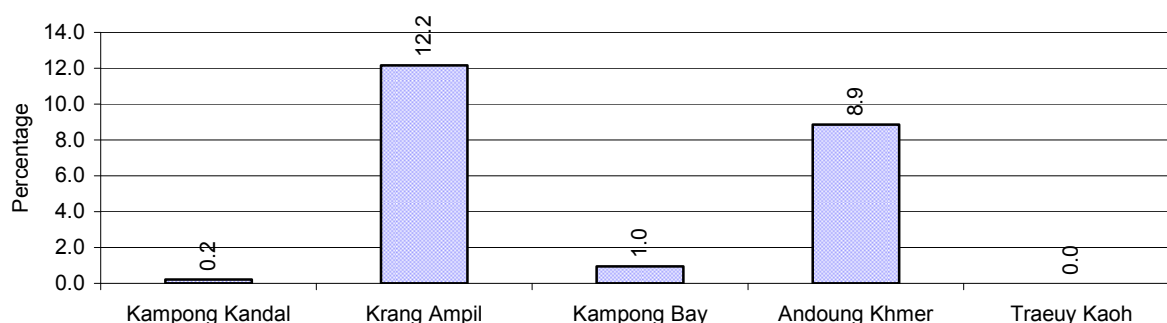
Note: In the first two rows percentages are calculated on the basis of the total number of families. In the third row the percentage is calculated on the basis of the total number of people aged 18-60 years.

1.2.4 Percentage of Families with public or private Sector Jobs, by Commune in 2008



Note: Calculated on the basis of the total number of families in the commune

1.2.5 Percentage of People aged 18-60 years with uncertain/irregular Jobs, by Commune, in 2008.



1.3 Property

1.3.1 Housing types and facilities over 3 years

This table shows the percentage of people living in a certain type of house. It also indicates how many houses have electricity or battery powered lights and how many have TV.

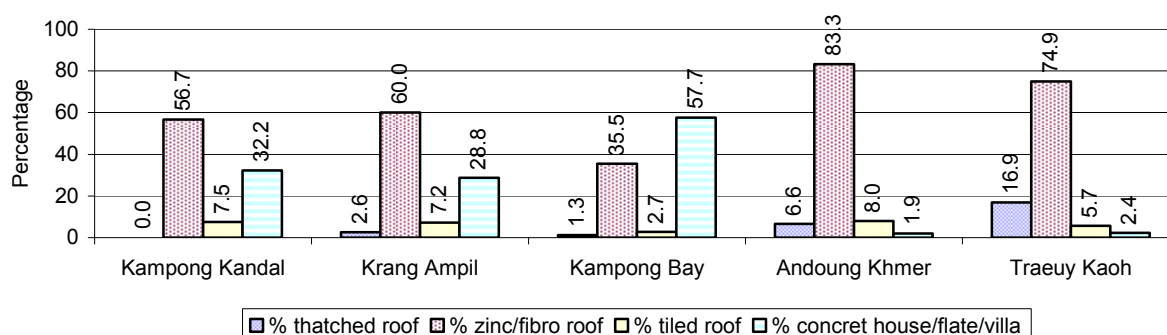
House Type	2006	2007	2008	
	%	%	%	Number
House with thatched roof	14 %	8 %	5 %	329 houses
House with zinc/fibro roof	56 %	65 %	64 %	4,144 houses
House with tiled roof	6 %	6 %	6 %	419 houses
Flats/apartments (with many families living)	5 %	6 %	5 %	312 houses
Concrete house or flat (with one family living)	17 %	13 %	19 %	1,210 houses
Villa house	1 %	1 %	1 %	60 houses
Houses with electricity	77 %	73 %	83 %	5,366 houses
Houses with battery light	12 %	11 %	12 %	772 houses
Houses with TV	59 %	69 %	75 %	4,843 houses

Note: Calculated against the total number of houses

1.3.2 Families living on public Land or without a permanent House

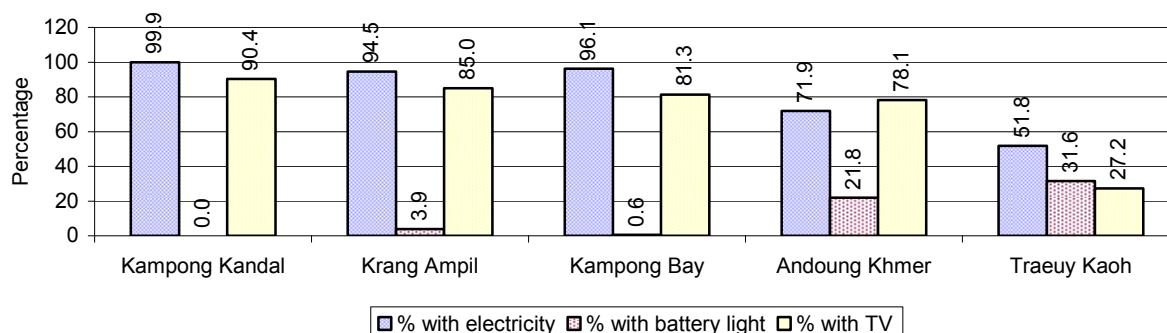
Living situation	2006	2007	2008
Families living in a house on public land	282 families	283 families	371 families
People, without permanent housing	12 person(s)	12 person(s)	1 person(s)

1.3.3 Percentage of Population living in a particular type of House, by Commune, in 2008



Note: Calculated against the total number of houses in each commune

1.3.4 Percentage of Houses with Electricity, Battery Lights and/or TVs, by Commune, in 2008



Note: Calculated against the total number of houses in each commune

1.3.5 Types of Vehicles and their ratio to Families across 3 years

This table shows the number of families per vehicle in the district. The last column shows the total number of each type of vehicle in the district for 2008.

Description	2006 ratio	2007 ratio	2008	
			Ratio	Number
Bicycle and bicycle with trailer	3	1	2	3,987
Ox-carts and horse-carts	36	28	28	242
Motorbike/with trailer	2	1	2	3,956
Motor tri-cycle	N/A	N/A	3,372	2
Large Transportation				
Total number of cars/trucks	14	13	9	724
Locally made vehicles	2,142	N/A	6,744	1
Trucks for goods transport	54	41	32	210
Buses/mini buses for passengers	153	188	130	52
Family cars	22	21	15	461
Agriculture machinery				
Tractors used for plowing	1,285	965	6,744	1
Power-tillage used for plowing	306	233	164	41
Other type of machinery				
Other type of machinery	100	355	2,248	3
Water transportation				
Row boats	59	50	55	123
Total number of motor boats	20	14	12	541
Motor boats used for fishing	21	15	15	441
Motor boats used for passengers	N/A	N/A	N/A	0
Motor boats used for goods transporting	584	281	67	100

Note: Ratio of families to a particular type of vehicle is the result of the total number of families divided by total number of that type of vehicle. Other types of vehicles, such as bulldozer, excavator, rollers etc. are not listed.

2 Infrastructure and Economy

2.1 Roads in meters over 3 years

Description	2006	2007	2008
Bituminous road	0 m	0 m	0 m
DBST, Macadam road	9,502 m	6,035 m	8,667 m
Concrete road	0 m	0 m	0 m
Laterite road	25,340 m	10,235 m	27,133 m
Constructed earth road	950 m	1,250 m	56,150 m
Un-constructed earth road	1,260 m	1,817 m	5,622 m

2.2 Sewerage Pipes in meters over 3 years

Description	Sewage pipe length		
	2006	2007	2008
Total length of sewage pipe, diameter 30-50 cm	256 m	1,037 m	6 m
Length of newly constructed sewage pipe, diameter 30-50 cm	1,000 m	4 m	18 m
Length of sewage pipe, diameter 30-50 cm needs repair/rehabilitation	250 m	0 m	0 m
Total length of sewage pipe, diameter of pipe 60-100 cm	2,572 m	12 m	0 m
Length of newly constructed sewage pipe, diameter 60-100 cm	3,100 m	0 m	0 m
Length of sewage pipe, diameter 60-100 cm needs repair/rehabilitation	600 m	0 m	0 m
Sewage pipe, diameter of pipe over 100 cm	710 m	3,170 m	0 m
Length of newly constructed sewage pipe, diameter over 100 cm	0 m	0 m	0 m
Length of sewage pipe, diameter over 100 cm needs repair/rehabilitation	350 m	0 m	0 m

2.3 Drainage and Bridges

Construction Type	2006		2007		2008	
	place(s)	Length	place(s)	Length	place(s)	Length
Single pipe culvert	22	124m	9	1,074 m	23	134 m
Double-pipe culvert	1	5m	0	0 m	2	14 m
Box pipe culvert	0	0m	0	0m	0	0 m
Wooden bridge	1	15m	0	0m	1	7 m
Concrete bridge	0	0m	0	0m	0	0 m
Bale bridge	0	0m	0	0m	0	0 m
Spillway construction	0	0m	1	130m	0	0 m

2.4 Services in the District

Descriptions	Number of places by year		
	2006	2007	2008
Public			
Electricity generating stations	6	4	3
Health clinics	19	11	11
Private			
Bicycle and motorcycle repair places	36	38	70
Agricultural machinery, tools and equipment repair places	14	16	13
Electronic tool repair places	23	16	25
Battery-charging services	14	17	11
Handicraft places, wooden furniture and forest by-products	12	9	38

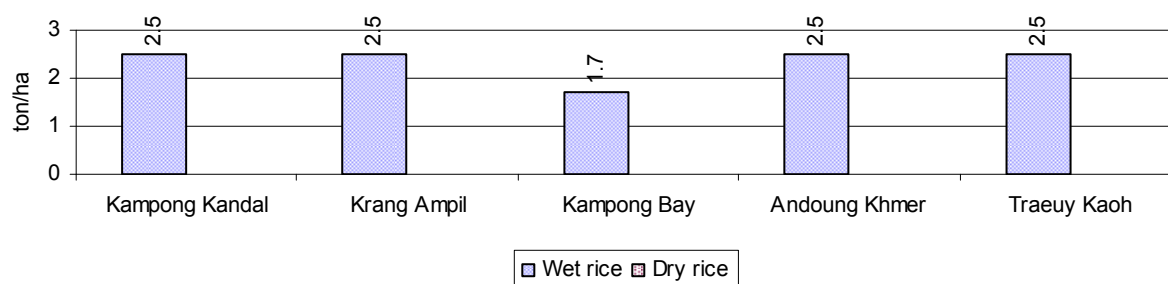
Descriptions	Number of places by year		
	2006	2007	2008
Other handicraft places (excluding furniture)	14	16	18
Small-scale services (hairstresser, phone service, massage, Karaoke, etc)	62	41	94
Small-scale food shop businesses (Food, groceries, drink shop, etc)	56	61	167
Small-scale rice mills	20	20	24
Medium or large-scale rice mills	2	1	1
Small-scale markets	1	1	1
Large-scale market	1	1	1
Alcohol refinery places	6	10	9
Pharmacies and small drug stores	13	12	11
Hotels	4	4	1
Guest houses	18	18	21
Restaurants	7	4	7
Gasoline stations	6	3	5

2.5 Agriculture

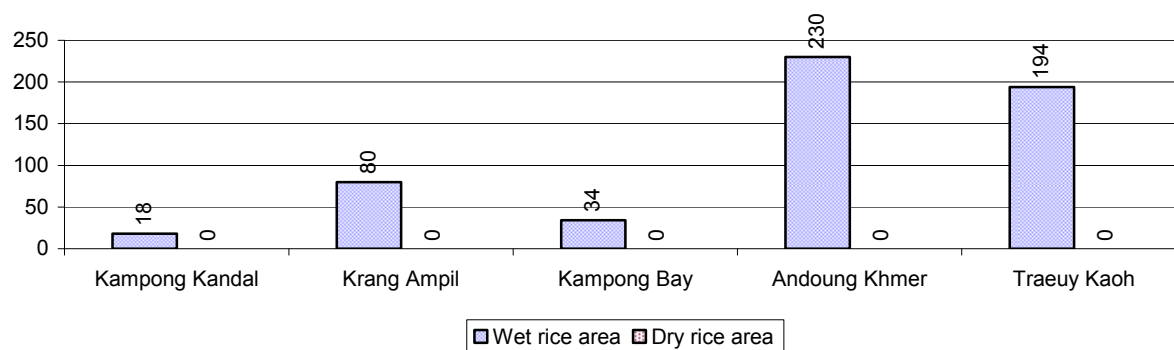
2.5.1 Rice cultivation in the District over 3 years

Description	2006	2007	2008
Total dry rice land area	0 ha	0 ha	0 ha
Actual dry rice cultivation area	0 ha	0 ha	0 ha
% actual cultivation to total land	-%	-%	-%
Total dry rice production	- tonne(s)	- tonne(s)	- tonne(s)
Average dry rice yield	- tonne(s)/ha	- tonne(s)/ha	- tonne(s)/ha
Total wet rice land area	553 ha	553 ha	556 ha
Actual wet rice cultivation area	553 ha	553 ha	556 ha
% actual cultivation to total land	100 %	100%	100%
Total wet rice production	1,414.40 tonne(s)	1,403.35 tonne(s)	1,301.04 tonne(s)
Average wet rice yield	2.6 tonne(s)/ha	2.5 tonne(s)/ha	2.3 tonne(s)/ha
Total intensive rice land area	292 ha	80 ha	160 ha
Actual intensive rice cultivation area	- ha	- ha	400 ha
Average intensive rice yield	- tonne(s)/ha	- tonne(s)/ha	2.5 tonne(s)/ha
Actual upland rice cultivation area	21 ha	25 ha	5 ha
Total upland rice production	38 tonne(s)	45 tonne(s)	8 tonne(s)
Average upland rice yield	1.8 tonne(s)/ha	1.8 tonne(s)/ha	1.5 tonne(s)/ha

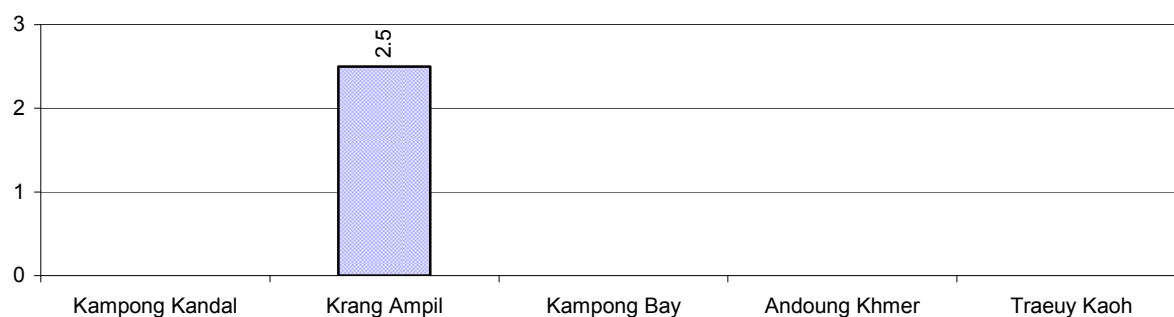
2.5.2 Estimated wet and dry Season Rice Yield in tonne(s)/Ha, by Commune, in 2008



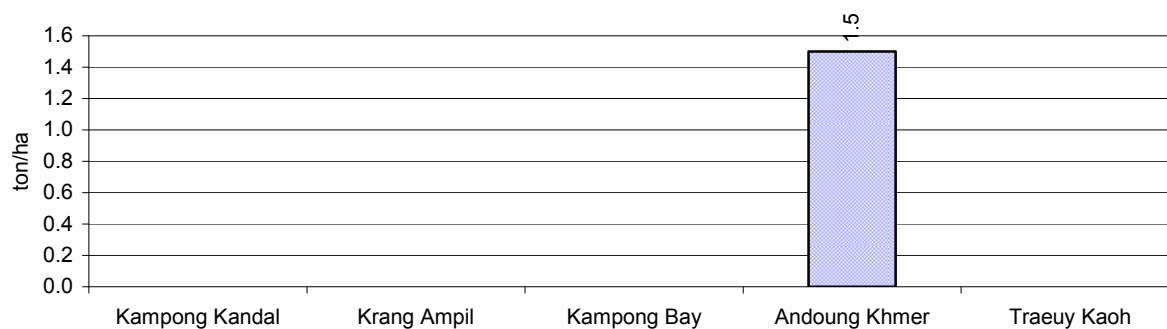
2.5.3 Cultivated wet and dry Season Rice areas in Ha, by Commune, in 2008



2.5.4 Estimated intensive Rice Yields in tonnes/Ha, by Commune, for 2008



2.5.5 Estimated upland Rice Yield in tonnes/Ha, by Commune, for 2008



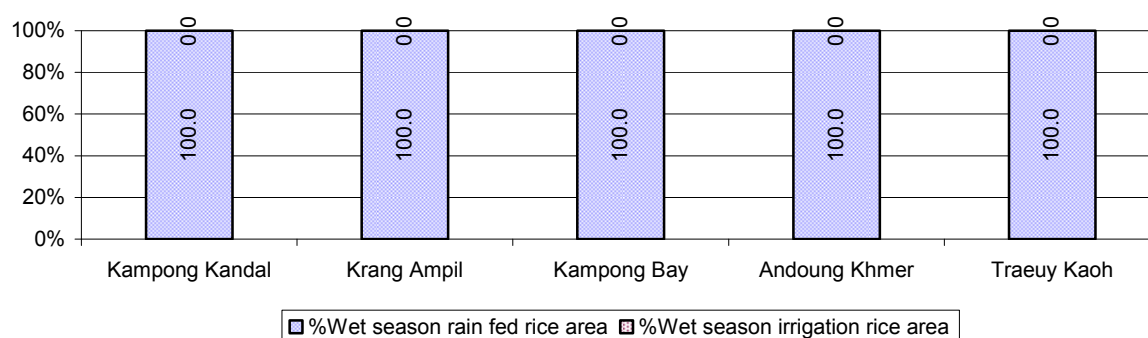
2.5.6 Wet season Rice irrigation across 3 years

Description		2006	2007	2008	
		%	%	%	Number
Total area of wet season rain fed rice land		100%	100%	100 %	556 ha
Percentage of wet season rice land that is irrigated; and for 2008 area in Ha		0 %	0 %	0 %	0 ha
Where	Area irrigated from canal/dam	- %	- %	- %	0 ha

	2006	2007	2008	
Area irrigated from river, stream, lake, natural pond	- %	- %	- %	0 ha
Area irrigated from drilled well	- %	- %	- %	0 ha
Area irrigated from dug pond	- %	- %	- %	0 ha

2.5.7 Water sources for wet Season Rice Cultivation, by Commune, in 2008

This chart shows the percentage of wet season rice cultivation receiving water from rain (natural) and from irrigation.



2.5.8 Access to Irrigation

Description	2006 %	2007 %	2008	
			%	Number
Families who have access to irrigation water	0%	0%	0%	0 families
Families who have irrigation wells	0%	0%	0%	1 families

Note: Calculated against the total number of families are rice farmers

2.5.9 Number of Irrigation Wells over 3 years

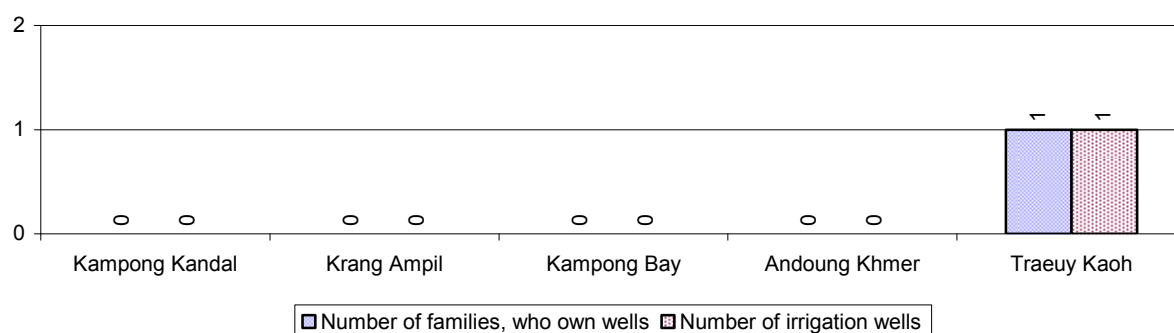
Description	2006	2007	2008
Number of irrigation wells	0 wells	1 wells	1 wells

2.5.10 Percentage of Families with access to (supplemental) Irrigation for wet Season Rice cultivation, by Commune, in 2008

There are no families with access to supplemental irrigation for wet season rice irrigation in this District in 2008

Note: % of families, with access to irrigation is calculated against the total number of families, whose main occupation is rice farming. Irrigated wet rice land area is calculated against the total actual wet rice land cultivated areas

2.5.11 Irrigation Wells, by Commune, in 2008

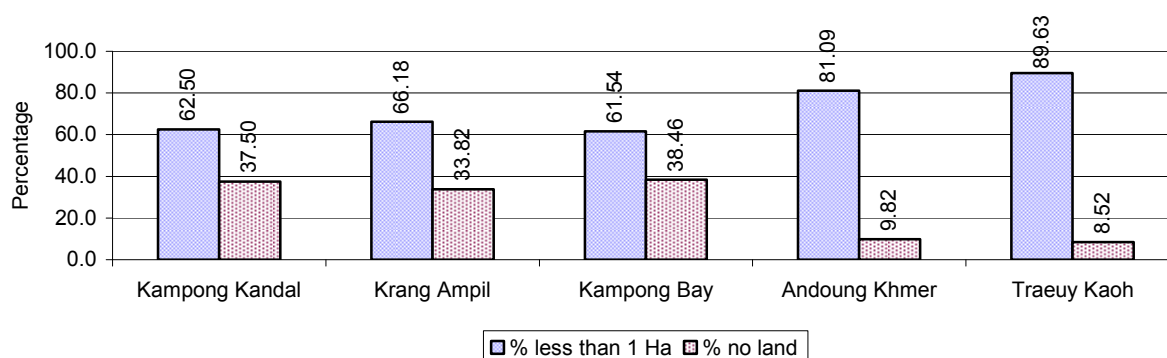


2.5.12 Farmers owning less than one hectare of Rice Land

Description	2006 %	2007 %	2008	
			%	Number
Families who have less than one hectare of rice land	84%	82%	80%	961 families
Families who do not own any rice land	12%	16%	15%	178 families

Note: Calculated on basis of total number of families who are rice farming

2.5.13 Percentage of Farmers with less than one Hectare or no Rice Land, by Commune, in 2008

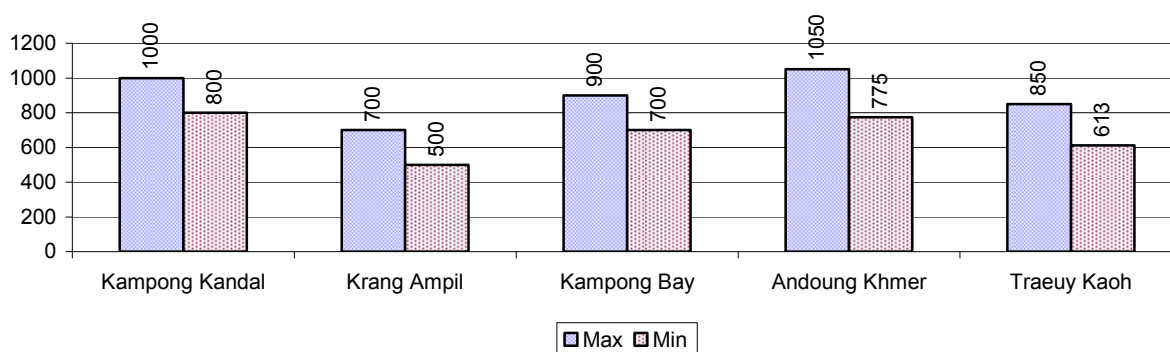


Note: Calculated on basis of total number of families who are rice farming

2.5.14 Average farm-gate Prices of Rice, over 3 years

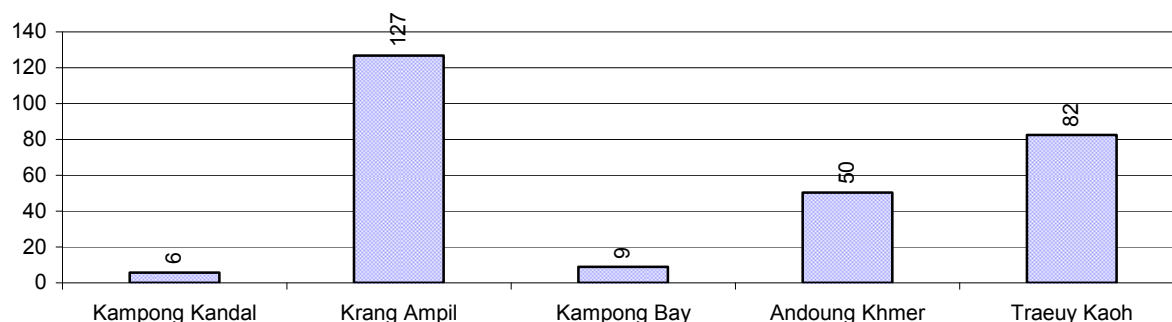
Description	2006	2007	2008
Maximum average farm gate price	613 Riels/Kg	880 Riels/Kg	900 Riels/Kg
Minimum average farm gate price	505 Riels/Kg	729 Riels/Kg	678 Riels/Kg
Average farm gate price	559 Riels/Kg	805 Riels/Kg	789 Riels/Kg
Average rice production per person	65 Kg/person	44 Kg/person	47 Kg/person

2.5.15 Minimum and maximum farm-gate Prices of Rice in Riel/kg, by Commune, in 2008



2.5.16 Production of Paddy in Kgs/Person, by Commune, in 2008

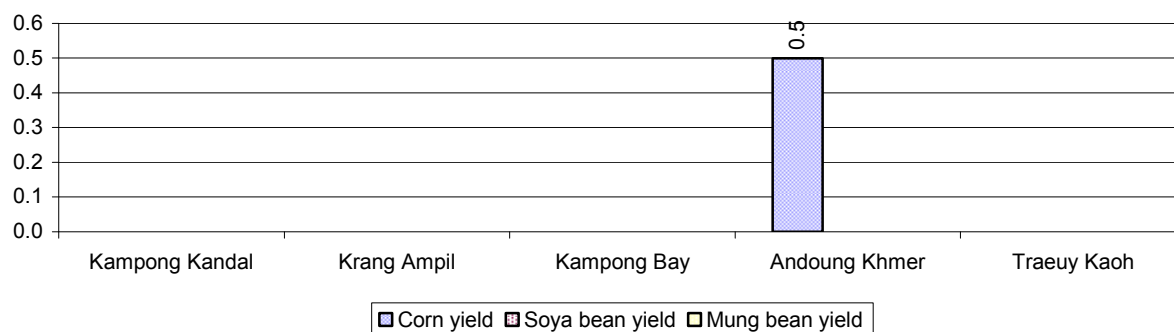
This table shows how much paddy (harvested rice) is produced in a year in a commune, in kgs per person.



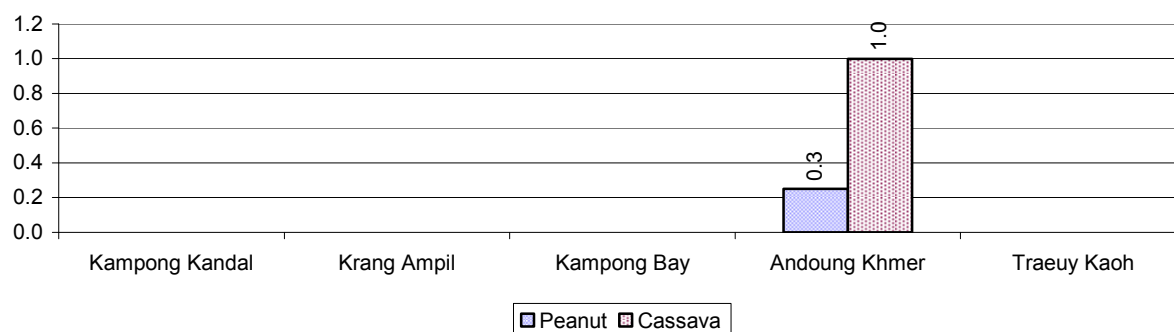
2.5.17 Production of other Crops, over 3 years

Crops	2006	2007	2008
Corn cultivation area	5 ha	6 ha	3 ha
Estimated corn yield	3.0 tonne(s)/ha	3.0 tonne(s)/ha	0.5 tonne(s)/ha
Estimated corn production	15 tonne(s)	18 tonne(s)	2 tonne(s)
Soya bean cultivation area	0 ha	0 ha	0 ha
Estimated Soya bean yield	- tonne(s)/ha	- tonne(s)/ha	- tonne(s)/ha
Estimated Soya bean production	- tonne(s)	- tonne(s)	- tonne(s)
Mungbean cultivation area	0 ha	0 ha	0 ha
Estimated Mungbean yield	- tonne(s)/ha	- tonne(s)/ha	- tonne(s)/ha
Estimated Mungbean production	- tonne(s)	- tonne(s)	- tonne(s)
Peanut cultivation area	8 ha	10 ha	1 ha
Estimated Peanut yield	1.2 tonne(s)/ha	1.2 tonne(s)/ha	0.3 tonne(s)/ha
Estimated Peanut production	10 tonne(s)	12 tonne(s)	0 tonne(s)
Cassava cultivation area	5 ha	7 ha	5 ha
Estimated Cassava yield	5.0 tonne(s)/ha	5.0 tonne(s)/ha	1.0 tonne(s)/ha
Estimated Cassava production	25 tonne(s)	35 tonne(s)	5 tonne(s)
Sweet potatoes cultivation area	6 ha	8 ha	4 ha
Estimated Sweet potatoes yield	2.6 tonne(s)/ha	2.5 tonne(s)/ha	1.0 tonne(s)/ha
Estimated Sweet potatoes production	16 tonne(s)	20 tonne(s)	4 tonne(s)
Sesame cultivation area	0 ha	0 ha	0 ha
Estimated Sesame yield	- tonne(s)/ha	- tonne(s)/ha	- tonne(s)/ha
Estimated Sesame production	- tonne(s)	- tonne(s)	- tonne(s)

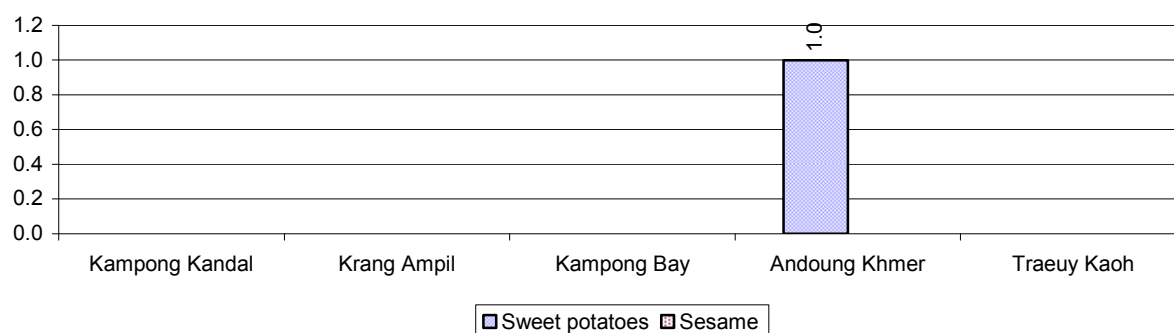
2.5.18 Yields of Corn, Soya beans and Mungbeans in tonne(s)/ha, by Commune, in 2008



2.5.19 Yields of Peanuts and Cassava in tonne(s)/ha by Commune, in 2008



2.5.20 Yields of Sweet Potatoes and Sesame in tonne(s)/ha, by Commune, in 2008



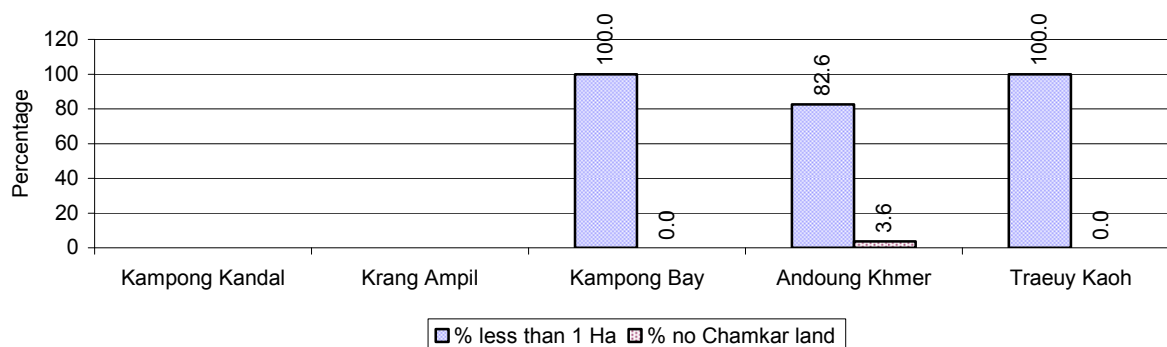
2.5.21 Percentage Farmers who own less than 1 Ha or no Chamkar land

Description	2006 %	2007 %	2008	
			%	Number
Families, who own less than 1ha of Chamkar land	74%	41%	84%	127 families
Families, with no Chamkar land	26%	14%	3%	5 families

Note 1: Calculated as a percentage of the total number of families whose main occupation is Chamkar (not rice) farming

Note 2: Chamkar land is no-rice land, i.e. other crops

2.5.22 Percentage Farmers owning less than 1 ha or no Chamkar land, by Commune, in 2008



Note: Percentage is calculated among families, who Chamkar farm as a main occupation, not the total population of the commune.

2.5.23 Percentage of Families raising Cattle/Buffalo, over 3 years

Description	2006 %	2007 %	2008	
			%	Number
Families raising cattle/buffalo	22%	20%	20%	1,380 families
Families raising cattle/buffalo as labor forces	15%	15%	15%	1,034 families

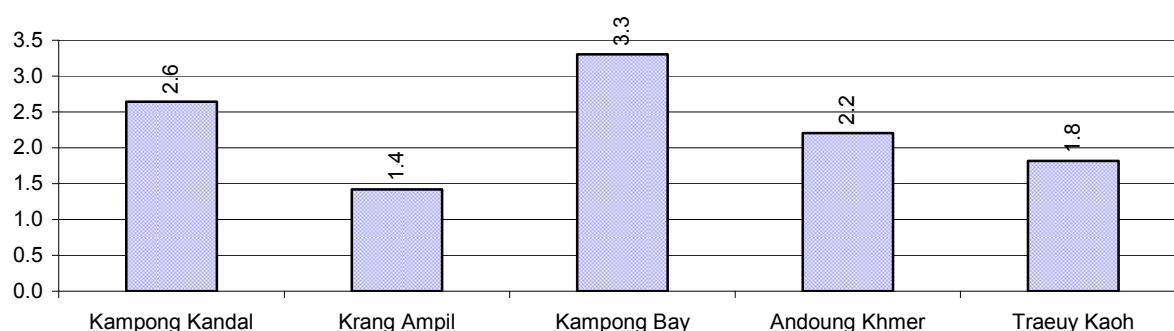
Note: Calculated against the total number of families.

2.5.24 Number of Cattle/buffalo being raised, over 3 years

Description	2006	2007	2008
Total number of cattle/buffalo	2,680 head(s)	2,968 head(s)	2,852 head(s)
Average cattle/buffalo per families	1.9 head(s)/families	2.2 head(s)/families	2 head(s)/families

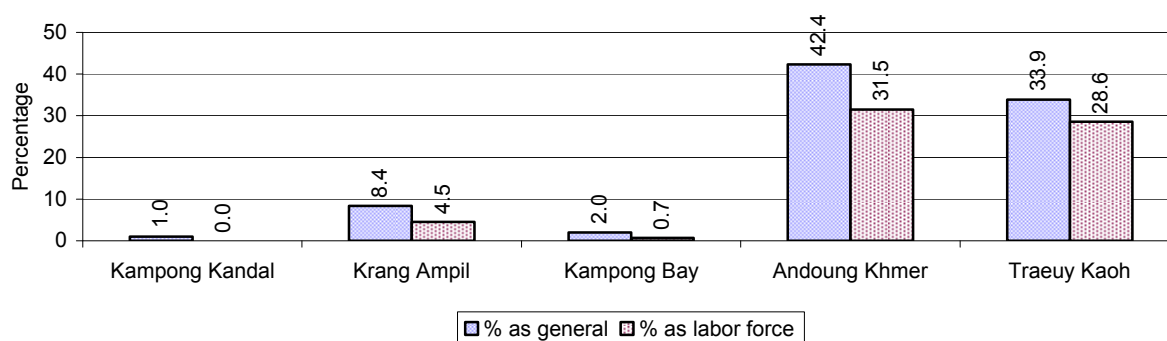
Note: Calculated by dividing total number of cattle/buffalo by total number of cattle/buffalo raising families

2.5.25 Average number of Cattle/Buffalo per Family, by Commune, in 2008



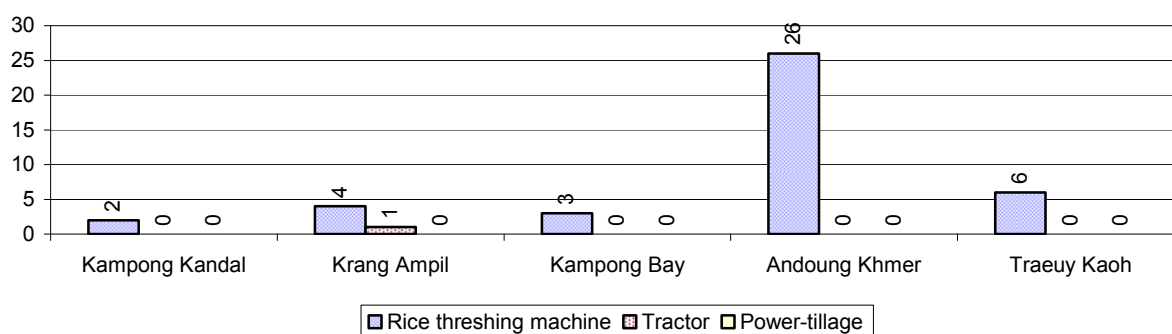
Note: Calculated by dividing total number of cattle/buffalo by total number of cattle/buffalo raising families

2.5.26 Percentage Families raising Cattle/Buffalo, for general and labor purposes in 2008, by Commune



Note: Calculated using the total number of families raising cattle/buffalo against the total number of families.

2.5.27 Type and number of agricultural Machines, by Commune, in 2008

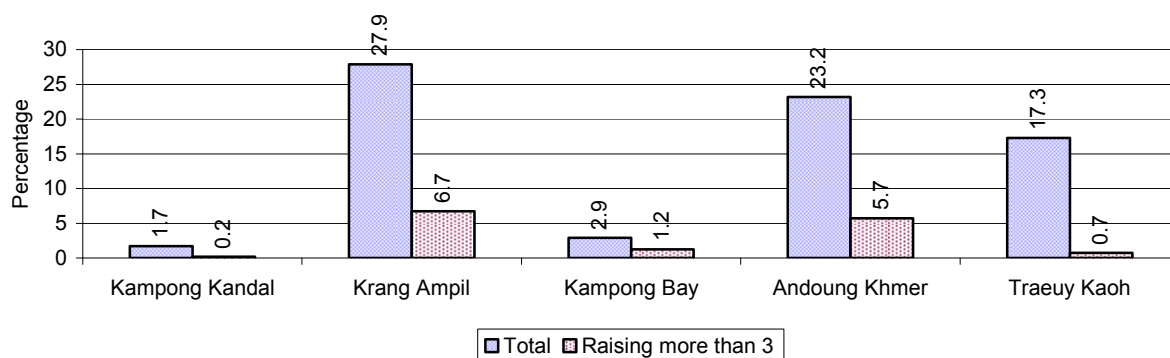


2.5.28 Livestock-producing Households over 3 years

Description	2006 %	2007 %	2008	
			%	Number
Total number of families raising pigs	18%	16%	15%	989 families
number of families raising more than 3 pigs	5%	5%	3%	201 families
Total number of families raising chickens	42%	46%	43%	2,888 families
number of families raising more than 3 chickens	30%	34%	33%	2,207 families
Total number of families raising ducks	3%	4%	5%	361 families
number of families raising more than 5 ducks	2%	3%	3%	184 families
Total number of families raising goats or sheep	0%	0%	0%	2 families
Total number of families raising horses	0%	0%	0%	0 families

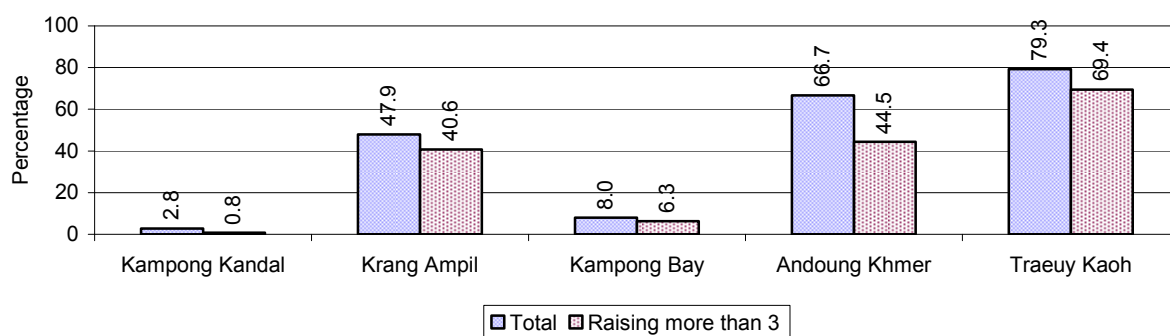
Note: Calculated against the total number of families

2.5.29 Percentage Families raising Pigs, by Commune, in 2008



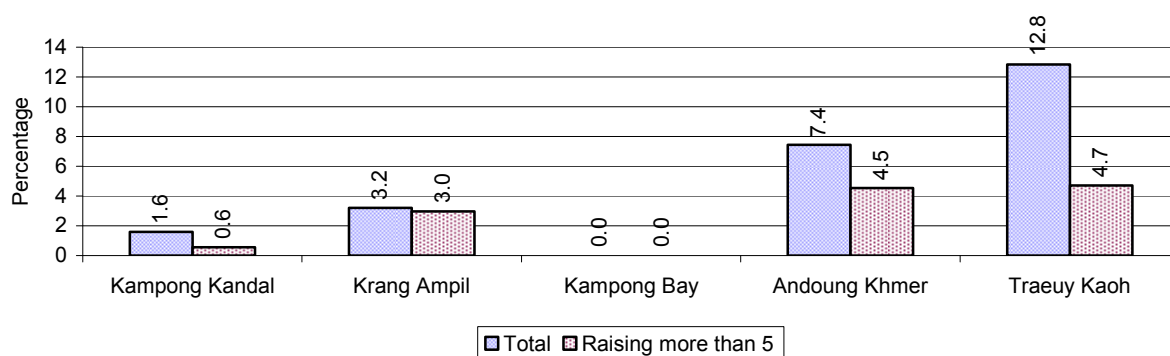
Note: Calculated against the total number of families in the commune

2.5.30 Percentage Families raising Chickens, by Commune, in 2008



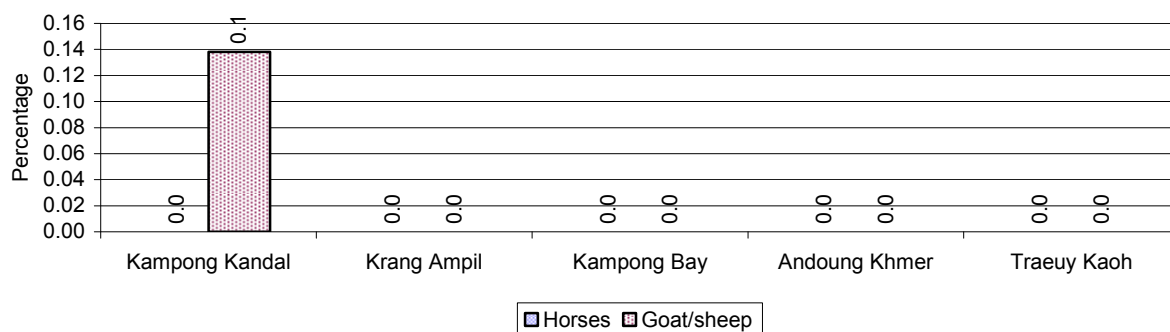
Note: Calculated against the total number of families in the commune

2.5.31 Percentage Families raising Ducks, by Commune, in 2008



Note: Calculated against the total number of families in the commune

2.5.32 Percentage Families raising Horses, Goats or Sheep, by Commune, in 2008

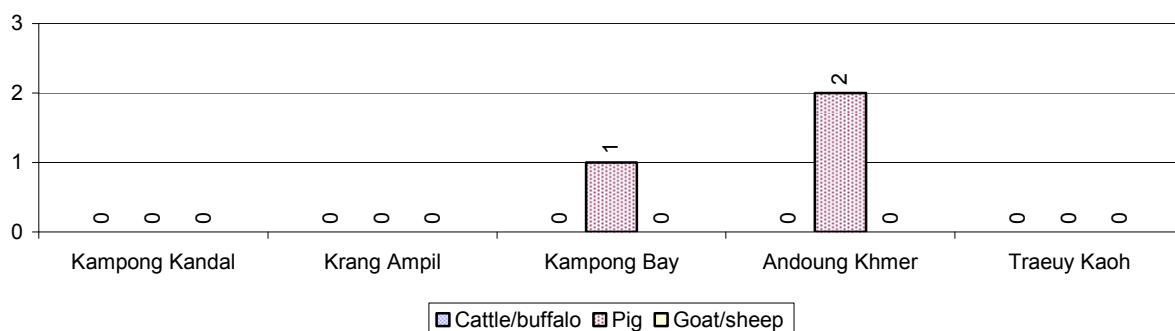


Note: Calculated against the total number of families in the commune

2.5.33 Livestock Farms over 3 years

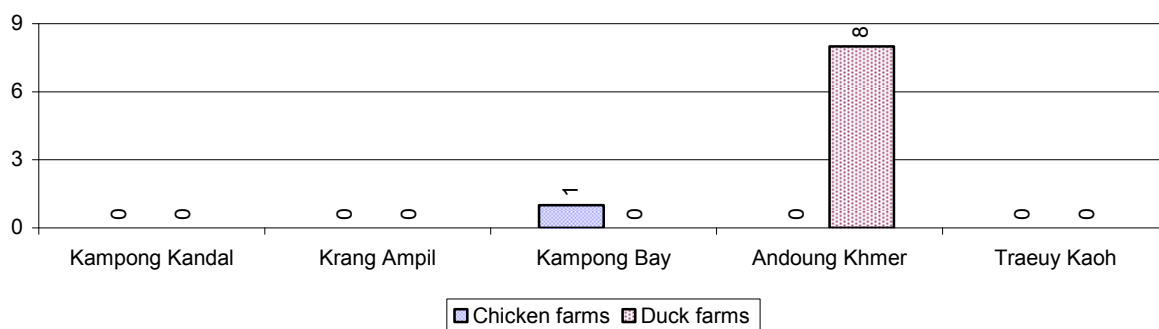
Description	2006	2007	2008
Number of cattle/buffalo farms	0 farm(s)	0 farm(s)	0 farm(s)
Number of pig farms	3 farm(s)	4 farm(s)	3 farm(s)
Number of goat/sheep farms	0 farm(s)	0 farm(s)	0 farm(s)
Number of chicken farms	0 farm(s)	1 farm(s)	1 farm(s)
Number of duck farms	9 farm(s)	9 farm(s)	8 farm(s)

2.5.34 Number Livestock Farms, by Commune in 2008



Note: Number of farms are recorded by the village chief, not by counting number of livestock in each farm

2.5.35 Number Chicken and Duck Farms, by Commune, for 2008



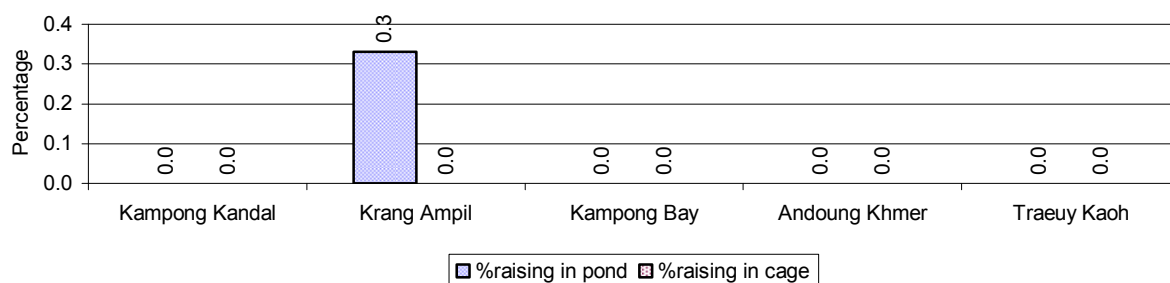
Note: Number of farm places recorded by village chief, not by counting number of livestock in each farm

2.5.36 Families raising Fish over 3 years

Description	2006	2007	2008
Total number of families raising fish	4 families	4 families	3 families
% families raising fish	0%	0%	0%
Number families raising fish in pond	4 families	4 families	3 families
% families raising fish in pond	0%	0%	0%
Number fish pond	6 pond(s)	6 pond(s)	4 pond(s)
No. of ponds per family	1.5 pond/families	1.5 pond/families	1.3 pond/families
Number of families raising fish in cage	0 families	0 families	0 families
%families raising fish in cage	0%	0%	0%
Number of fish cage	0 cage(s)	0 cage(s)	0 cage(s)
No. of fish cage per family	- cage /families	- cage /families	- cage /families

Note: % of families raising fish or fish in ponds or cages is calculated as a percentage of the total number of families.

2.5.37 Percentage of Families raising Fish, by Commune, in 2008



Note: Calculated as a percentage of the total number of families in the commune.

2.5.38 Shrimp and Prawn Farming over 3 years

Description	2006	2007	2008
Number of families raising shrimps	0 families	0 families	0 families
% Families raising shrimps	0%	0%	0%
Number of shrimp ponds	0 pond	0 pond	0 pond
Total area raising shrimps	0 ha	0 ha	0 ha
Area per family	-ha/families	-ha/families	-ha/families
Number of families raising prawns	0 families	0 families	0 families
% families raising prawns	0%	0%	0%
Number prawn ponds	0 pond	0 pond	0 pond
Ponds per families	- pond/families	-pond/families	-pond/families
Number of prawn cages	0 cage	0 cage	0 cage
Cages per families	0 cage /families	0 cage /families	0 cage /families

Note: Percentage of families raising either prawns or shrimp is calculated against the number of families, who do aquaculture farming, NOT the total population.

2.5.39 Numbers of Families raising Shrimps and number of Shrimp Ponds, by Commune, in 2008

There were none of these in this District in 2008

2.5.40 Number of Families raising Prawn and Number of Prawn Ponds/Cages, by Commune, in 2008

There were none of these in this District in 2008

3 Social Aspects

3.1 Education

3.1.1 Kindergarten in the District over 3 years

Description	2006	2007	2008
Number of community kindergarten schools	1 school(s)	1 school(s)	1 school(s)
Number of community kindergarten class rooms	1 room(s)	1 room(s)	1 room(s)
Number of community kindergarten classes	1 class(es)	1 class(es)	1 class(es)
Number of community kindergarten teachers	1 person(s)	1 person(s)	1 person(s)
Number of women community kindergarten teachers	1 women	1 women	1 women
Number of state and private kindergarten schools	8 school(s)	8 school(s)	8 school(s)
Number of state and private kindergarten class rooms	12 room(s)	12 room(s)	10 room(s)
Number of state and private kindergarten classes	12 class(e)s	12 class(es)	10 class(es)
Number of state and private kindergarten teachers	13 person(s)	13 person(s)	8 person(s)
Number of women state and private kindergarten teachers	12 women	13 women	8 women

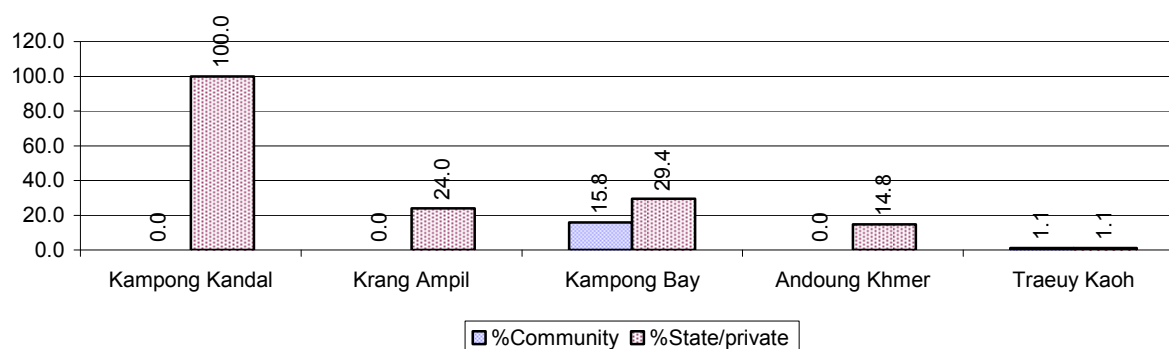
3.1.2 Percentage enrolment at Kindergarten level over 3 years

This table shows the percentage of the total 3-5 year old population attending kindergarten.

Description	2006 %	2007 %	2008	
			%	Number
Total percentage of children, 3-5 yrs, go to kindergarten	21%	31%	40%	1,054 person(s)
Percentage of children, 3-5 yrs, go community kindergarten	0%	4%	2%	46 person(s)
Percentage children, 3-5 yrs, go state/private kindergarten	20%	27%	39%	1,008 person(s)

Note: Calculated against the total for that age group

3.1.3 Percentage of Children 3-5 yrs attending Kindergarten, by Commune, in 2008



3.1.4 Basic Education over 3 years

Primary School

Description	2006	2007	2008
Number of primary schools	13 school(s)	13 school(s)	16 school(s)
Number of primary school rooms	117 room(s)	124 room(s)	119 room(s)

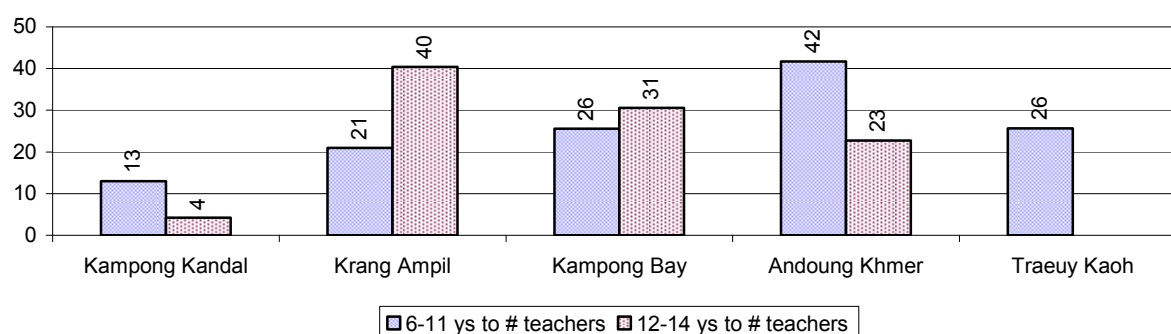
Description	2006	2007	2008
Number of primary classes	186 class(es)	193 class(es)	144 class(es)
Number of primary teachers	180 person(s)	180 person(s)	170 person(s)
Ratio of children 6-11 yrs to school	263	305	260
Ratio of children 6-11 yrs to school room	29	32	35
Ratio of children 6-11 yrs to class	18	21	29
Ratio of children 6-11 yrs to teacher	19	22	24

Note: According to education norm, children 6-11 yrs should attend primary school, while 12-14 yrs should be in lower secondary school, but in reality this varies.

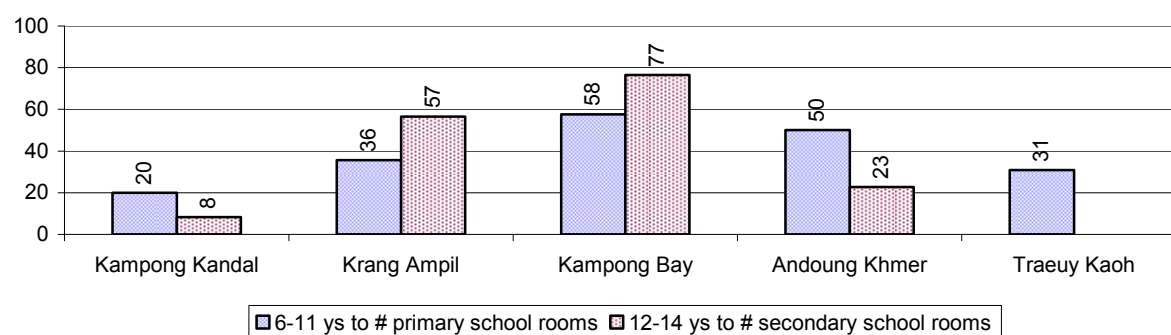
Lower Secondary School

Description	2006	2007	2008
Number of lower secondary schools	2 school(s)	2 school(s)	4 school(s)
Number of lower secondary school rooms	53 room(s)	53 room(s)	101 room(s)
Number of lower secondary classes	101 class(es)	105 class(es)	102 class(es)
Number of lower secondary teachers	131 person(s)	131 person(s)	147 person(s)
Ratio children 12-14 yrs to school	1,277	1,277	647
Ratio of children 12-14 yrs to school room	48	48	26
Ratio of children 12-14 yrs to class	25	24	25
Ratio of children 12-14 yrs to teacher	19	19	18

3.1.5 Ratio of 6-11 year old and 12-14 year old Children to number of Teachers, by Commune, in 2008



3.1.6 Ratio of 6-11 year old and 12-14 year old Children to number of School Rooms, by Commune, in 2008



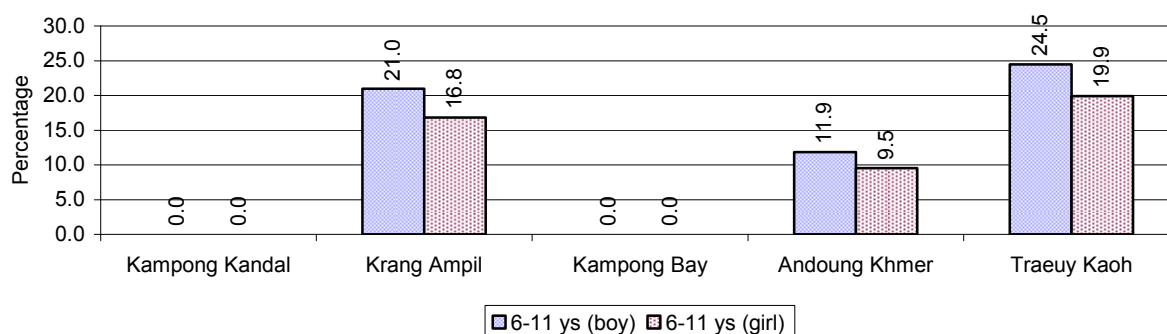
3.1.7 Enrolment status at Primary Level over 3 years

Description	2006 %	2007 %	2008	
			%	Number
Total children aged 6-11 years old	10%	11%	11%	4,157 person(s)
Total children aged 6-11 who are in school	78%	85%	90%	3,733 person(s)
Total children aged 6-11 who are not in school	22%	15%	10%	424 person(s)
Total girls aged 6-11 years old	10%	11%	11%	2,167 person(s)
Total girls aged 6-11 who are in school	79%	82%	91%	1,970 person(s)
Total girls aged 6-11 who are not in school	21%	18%	9%	197 person(s)
Total boys aged 6-11 years old	11%	10%	11%	1,990 person(s)
Total boys aged 6-11 who are in school	76%	89%	89%	1,763 person(s)
Total boys aged 6-11 who are not in school	24%	11%	11%	227 person(s)

Note 1: Percentage is calculated on the basis of the total number of children within 6-11 year age group for the first 3 rows and for the total girls and the total boys aged 6-11 yrs.

Note 2: Number of girls aged 6-11 who are in & not in school is calculated against the total number of girls aged 6-11 yrs. Number boys, 6-11 yrs who are in & not in school are calculated against the total number of boys aged 6-11 yrs.

3.1.8 Percentage of 6-11 year old Children not in School, by Commune, in 2008



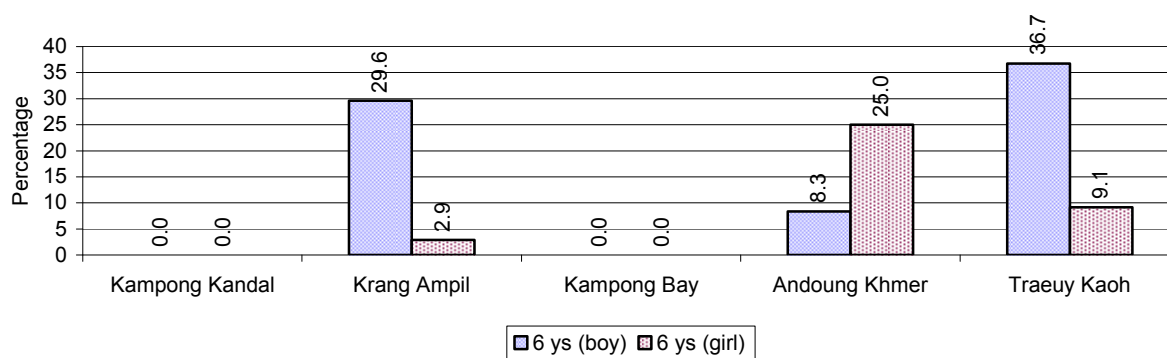
Note: calculated on the basis of the total number of children within 6-11 year age group in the commune.

3.1.9 Enrolment of 6 year old Children over 3 years

Description	2006 %	2007 %	2008	
			%	Number
Total % and number of children aged 6 years old	3%	4%	4%	1,396 person(s)
Total % of children aged 6 years old in school	76%	82%	91%	1,265 person(s)
Total % of children aged 6 years old not in school	24%	18%	9%	131 person(s)

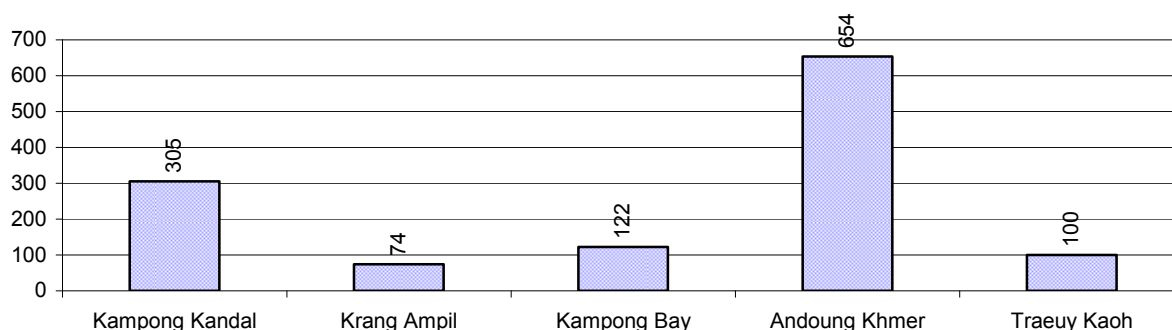
Note: First row calculated as a percentage of total population. Second and third row calculated as a percentage of the total number of 6 year olds.

3.1.10 Percentage of 6 year old Children not in School, by Commune, in 2008



Note: Calculated as a percentage of total 6 year old population

3.1.11 Number of 5 year old Children in each Commune in 2008

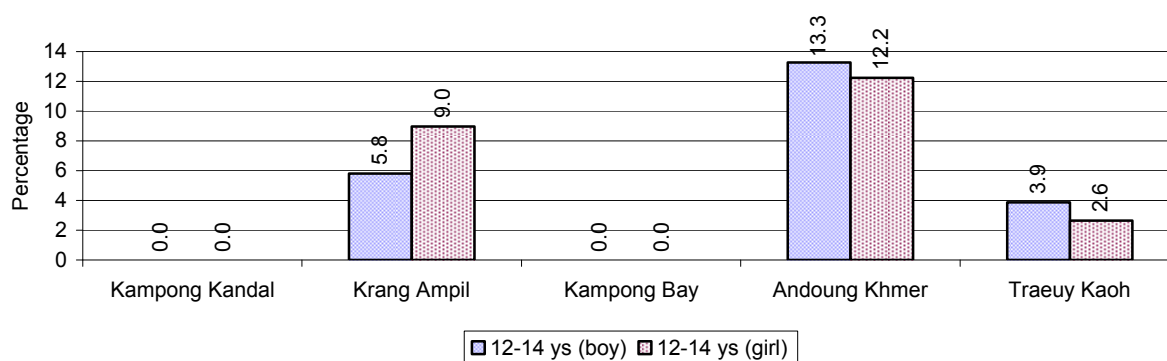


3.1.12 Enrolment at Lower Secondary Level over 3 years

Description	2006 %	2007 %	2008	
			%	Number
Total children aged 12-14 years old	8%	7%	7%	2,588 person(s)
Children aged 12-14 years old in school	87%	90%	93%	2,400 person(s)
Children aged 12-14 years old not in school	13%	10%	7%	188 person(s)
Total girls aged 12-14 years old	7%	7%	7%	1,298 person(s)
Girls aged 12-14 years old in school	89%	87%	93%	1,207 person(s)
Girls aged 12-14 years old not in school	11%	13%	7%	91 person(s)
Total boys aged 12-14 years old	8%	7%	7%	1,290 person(s)
Boys aged 12-14 years old in school	86%	93%	92%	1,193 person(s)
Boys aged 12-14 years old not in school	14%	7%	8%	97 person(s)

Note: Percentage is calculated on the basis of number of the total number of children within 12-14 yrs group, except for the first row of each section which is calculated on the basis of the total population.

3.1.13 Percentage of 12-14 year olds not in School, by Commune, in 2008



Note: Calculated as a percentage of the total 12-14 year old population in each commune

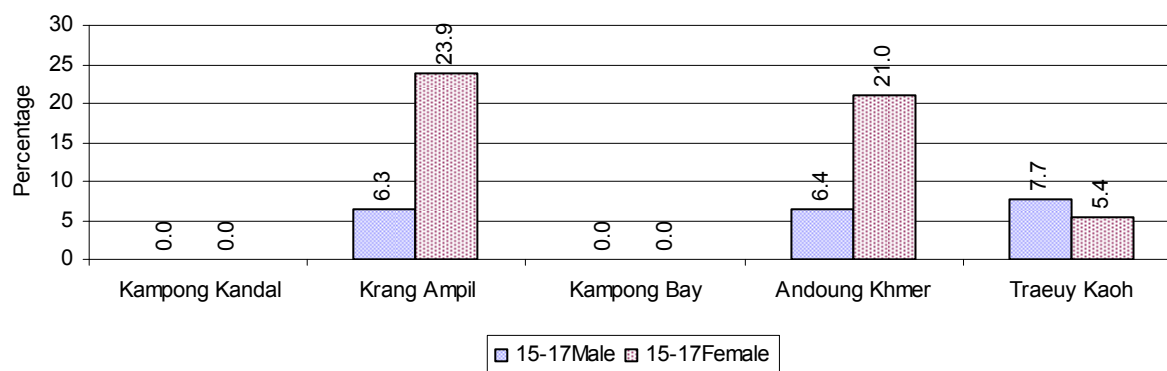
3.1.14 Upper Secondary Schools over 3 years

Description	2006	2007	2008
Number of upper secondary schools	2 school(s)	2 school(s)	1 school(s)
Number of upper secondary school rooms	29 room(s)	29 room(s)	53 room(s)
Number of upper secondary classes	53 class(es)	53 class(es)	53 class(es)
Number of upper secondary teachers	86 person(s)	86 person(s)	35 person(s)
Ratio of 15-17 yr olds to number of school	1,661	1,529	3,138
Ratio of 15-17 yr olds to number of school room	115	105	59
Ratio of 15-17 yr olds to number of classes	63	58	59
Ratio of 15-17 yr olds to number of teacher	39	36	90

3.1.15 Enrolment of 15-17 year old teenagers over 3 years

Description	2006	2007	2008
Number of teenage, 15-17 years old	3,322 person(s)	3,057 person(s)	3,138 person(s)
Number of teenage, 15-17 years old, who are not studying	570 person(s)	543 person(s)	304 person(s)
Percentage of teenage, 15-17 years old not studying	17%	18%	10%

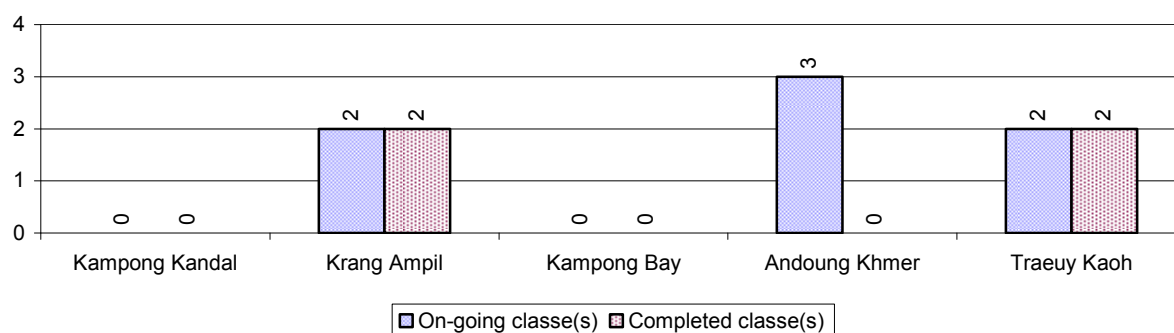
3.1.16 Percentage of 15-17 year old Teenagers not at School, by Commune, in 2008



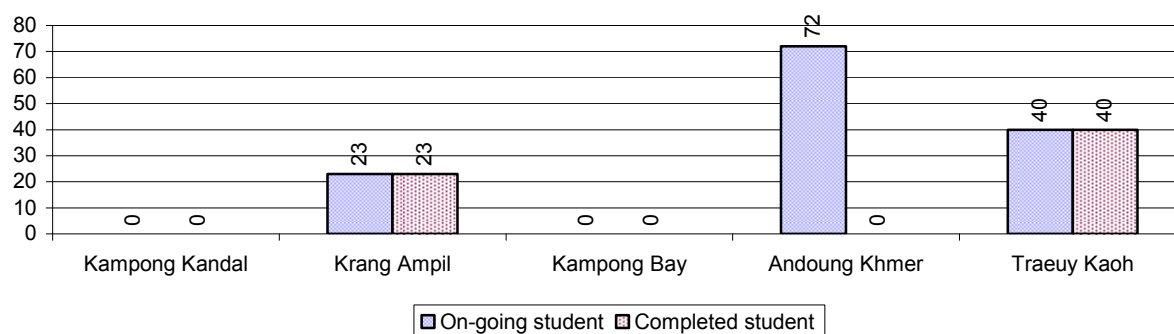
3.1.17 Literacy Classes as of 2008

Literacy classes	Organized by:		Other Program(s)	Total
	PDoEYS	NGOs		
Number of On-going literacy classes	7 class(es)	0 class(es)	0 class(es)	7 class(e(s)
Number of literacy students in on-going classes	135 person(s)	0 person(s)	0 person(s)	135 person(s)
Completed literacy class(es)	4 classes	0 classes	0 classes	4 classes
Number of literacy students that have completed literacy classes	63 person(s)	0 person(s)	0 person(s)	63 person(s)
Number of students that passed	63 person(s)	0 person(s)	0 person(s)	63 person(s)

3.1.18 Number of on-going and completed Literacy Classes, by Commune, in 2008



3.1.19 Students of on-going & completed Literacy Classes, by Commune, in 2008

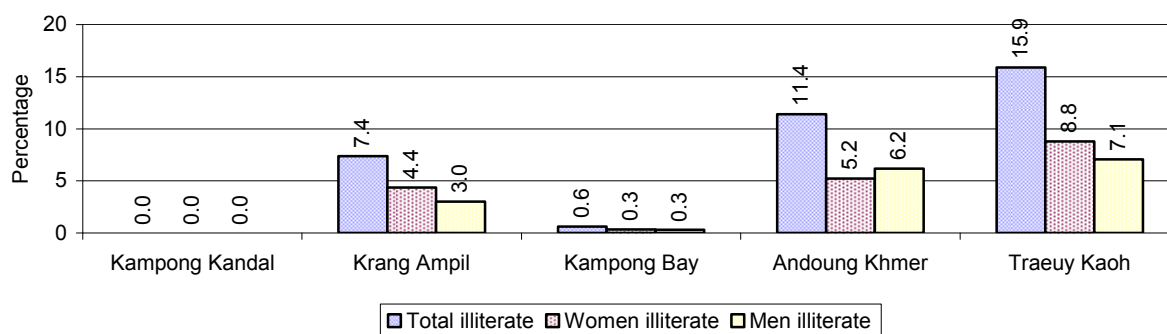


3.1.20 Percentage of illiterate People between 15-60, over 3 years

Illiteracy Status	2006 %	2007 %	2008	
			%	Number
Illiterate people, 15-60 years old	8%	7%	7%	1,603 person(s)
Illiterate females, 15-60 years old	5%	4%	4%	828 person(s)
Illiterate people, 15-17 years old	3%	2%	3%	91 person(s)
Illiterate females, 15-17 years old	2%	2%	1%	42 person(s)
Illiterate people, 18-24 years old	4%	2%	4%	178 person(s)
Illiterate females, 18-24 years old	2%	2%	2%	94 person(s)
Illiterate people, 25-60 years old	11%	9%	9%	1,334 person(s)
Illiterate females, 25-60 years old	6%	5%	4%	692 person(s)

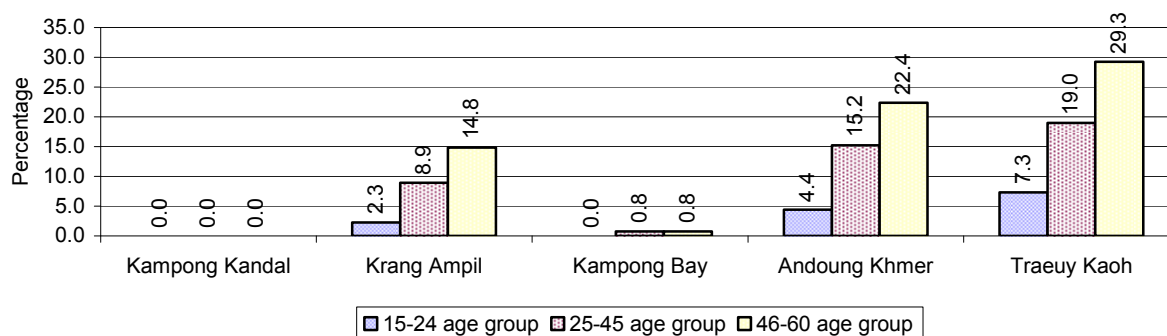
Note: Percentage is calculated on the basis of number of people in age each group.

3.1.21 Percentage illiterate People among 15-60 yrs old, by Commune, in 2008



Note: Percentages are calculated on the basis of number of people in that age group.

3.1.22 Percentage illiterate People for 15-24 yrs, 25-45 yrs and 46-60 yrs, by Commune, in 2008



Note: Percentage of illiterate people in each age group is calculated on the basis of number of people in that age group.

3.2 Health

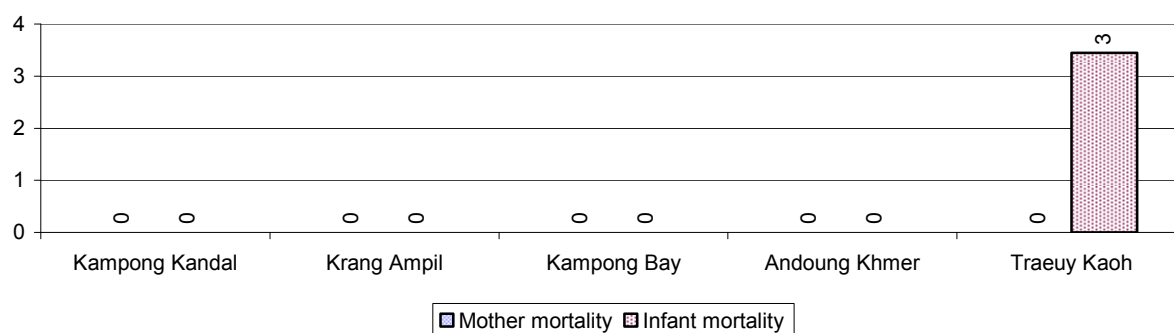
3.2.1 Health Situation of Women and Children, over 3 years

Description	2006	2007	2008
Number families with a birth during the year	477 families	416 families	483 families
Number of women who had their baby delivered by a TBA	25 person(s)	23 person(s)	68 person(s)
Percentage of women who had their baby delivered by a TBA	5 %	6 %	14 %
Number of women who had their baby delivered by a midwife	452 person(s)	393 person(s)	415 person(s)
Percentage of women had their baby delivered by a midwife	95 %	94 %	86 %
Number of mothers who died within 1 month of giving birth	2 person(s)	1 person(s)	0 person(s)
Mothers who died within 1 month of giving birth per 100,000 families having a delivery	419	240	0
Number of infants born during the year	477	416	483

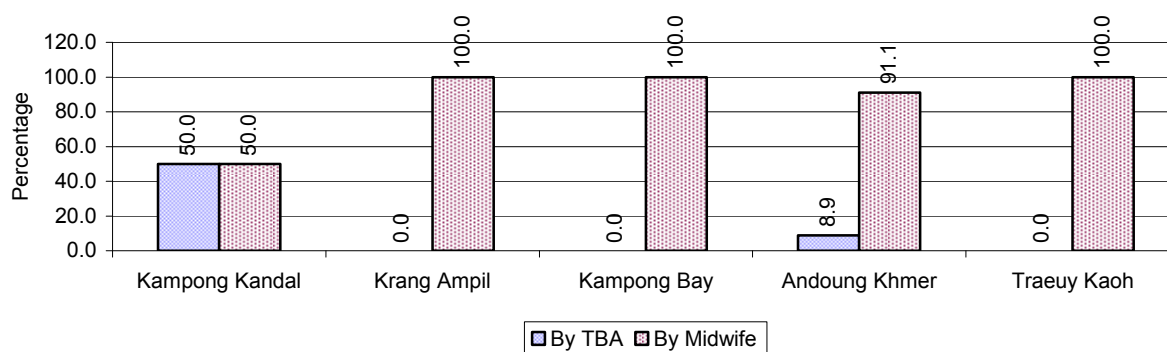
Description	2006	2007	2008
	person(s)	person(s)	person(s)
Number of Infants who died within 1 month	3 person(s)	6 person(s)	1 person(s)
Infants mortality within 1 month per 1,000 births	6	14	2
Number of children who died below the age of 5.	31 person(s)	11 person(s)	4 person(s)
Number of infants, aged 9-12 months, born during the year	413 person(s)	360 person(s)	246 person(s)
Nr. infants, aged 9-12 months, not receiving full immunization	13 person(s)	25 person(s)	0 person(s)
% of 9-12 months infants, not receiving full immunization	3 %	7 %	0 %

Note: TBA = Traditional Birth Attendant

3.2.2 Mothers dying within 0 days to 1 month of giving Birth and Infants dying within 1 month in 2008, by Commune

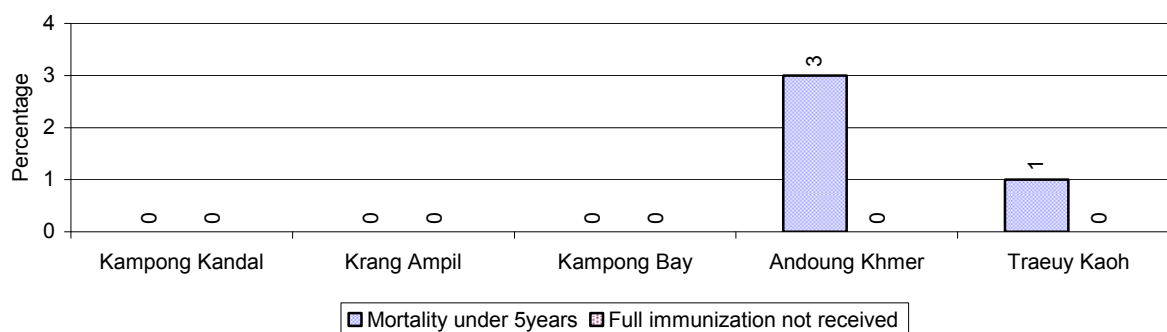


3.2.3 Percentage of Women delivering with a TBA or Midwife, by Commune



Note: Calculated as a percentage of total deliveries

3.2.4 Percentage of Children dying below 5 & of 9-12 months not receiving full Immunization, by Commune, in 2008



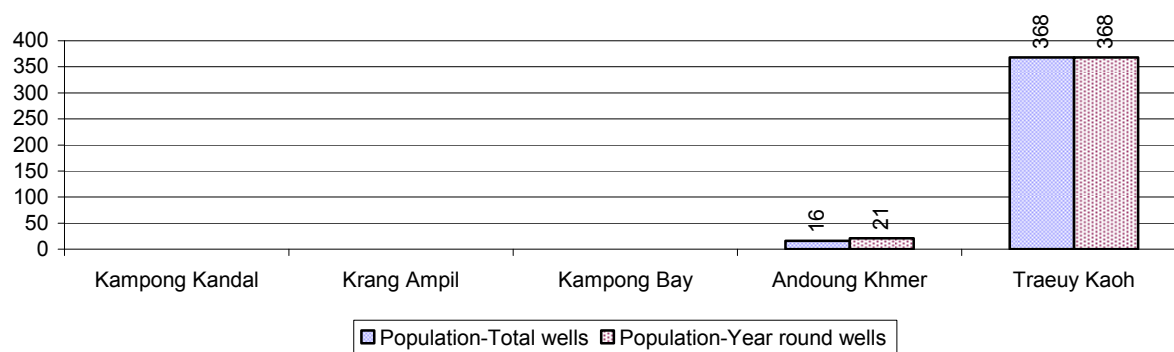
Note: Mortality rate calculated as a percentage of the total 5 year old population. Lack of immunization received calculated as a percentage of the total number 9-12 months olds there are

3.3 Water and Sanitation

3.3.1 Number of different types of Wells over 3 years

Type of wells	Number of wells by year		
	2006	2007	2008
<i>Total number of pumped or mixed wells</i>	306	289	393
Year-round usable pumped or mixed wells	183	241	242
Dry season unusable pump or mixed wells	123	48	151
Pump or mixed wells needing repair/rehabilitation	21	14	16
<i>Total number of ring wells</i>	573	222	342
Year-round usable ring wells	300	198	323
Dry season unusable ring wells	273	24	19
Ring wells needing repair/rehabilitation	23	22	11
<i>Total number of unprotected dug wells</i>	52	58	56
Year-round usable unprotected dug wells	45	48	46
Dry season unusable unprotected dug wells	7	10	10

3.3.2 Ratio of People to Wells, by Commune, in 2008

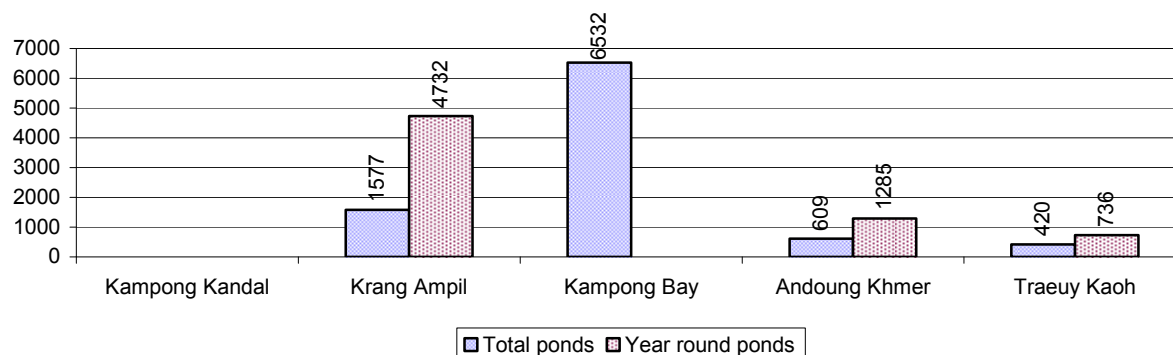


Note: Year-round wells excluding unprotected wells

3.3.3 Potable Ponds over 3 years

Type of Pond	2006	2007	2008
<i>Total number of normal-type ponds</i>	33 pond	38 pond	37 pond
Year-round usable normal-type ponds	15 pond	18 pond	18 pond
Dry season unusable normal-type ponds	18 pond	20 pond	19 pond
Normal-type ponds needing repair/rehabilitation	18 pond	24 pond	29 pond
<i>Total number of filter ponds</i>	0 pond	0 pond	0 pond
Year-round usable filter ponds	0 pond	0 pond	0 pond
Filter ponds, dry season unusable	0 pond	0 pond	0 pond
Filter ponds needing repair/rehabilitate	1 pond	0 pond	0 pond

3.3.4 Ratio of People to normal Ponds, by Commune in 2008



3.3.5 Ratio of People to Filter Ponds, by Commune, in 2008

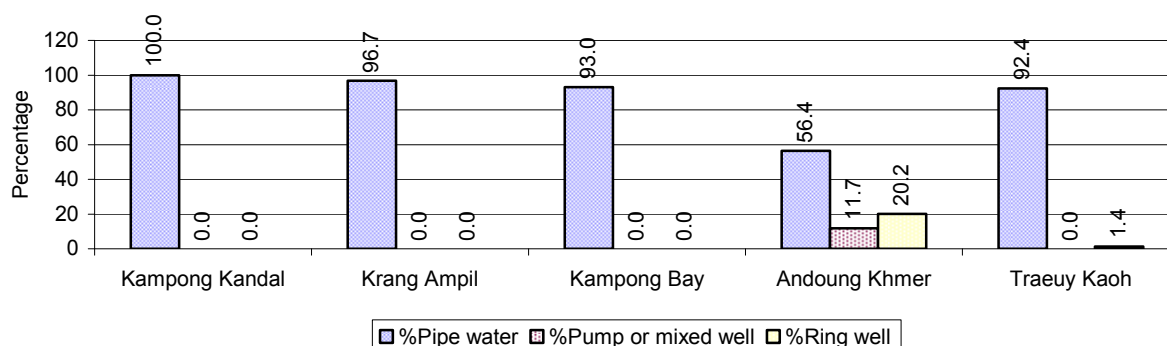
There were no filter ponds in this District in 2008

3.3.6 Source of potable Water for Households, over 3 years

Water sources	2006 %	2007 %	2008	
			%	Number
Families using water from purification system	85%	80 %	84 %	5,671 families
Families using water from pump, mixed wells	0%	3 %	3 %	233 families
Families using water from ring wells and open dug wells	5%	7 %	6 %	418 families
Families using water from pond	8%	8 %	5 %	323 families
Families using water from rain water storage	0%	1 %	1 %	60 families
Families using water from rivers, lakes, natural ponds and reservoirs	1%	1 %	1 %	39 families

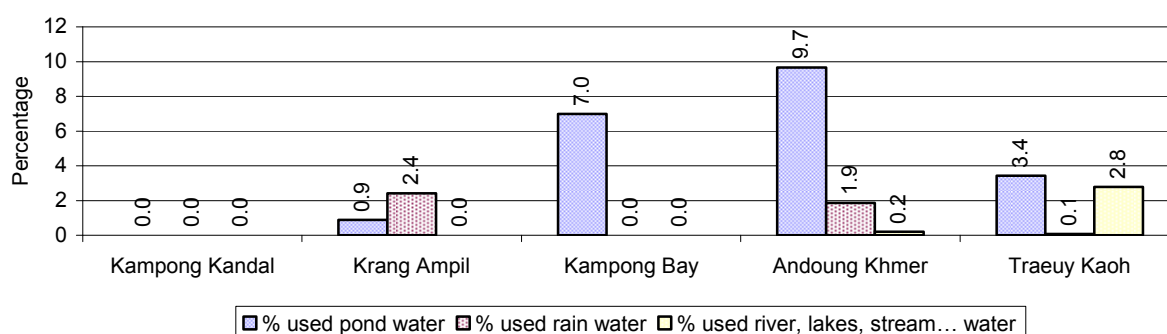
Note: Calculated as a percentage of the total number of families.

3.3.7 Percentage Families using different Water Sources, by Commune, in 2008



Note: Calculated as a percentage of the total number of families in each commune

3.3.8 Percentage Families using Water from Rain Water Storage, Ponds and natural Sources (rivers/lakes/natural ponds/reservoirs), by Commune, 2008



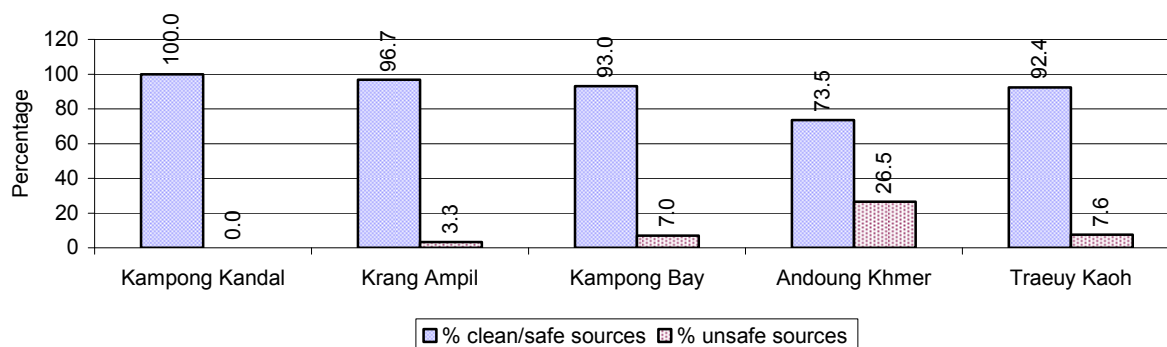
Note: Calculated as a percentage of the total number of families in each commune

3.3.9 Drinking Water Sources in the dry Season over 3 years

Percentage Families that get drinking water from:	2006 %	2007 %	2008	
			%	Number
from clean/safe sources	93 %	85 %	89 %	6,011 families
from unsafe sources	7 %	15 %	11 %	733 families

Note: Calculated as a percentage of the total number of families.

3.3.10 Percentage Families using safe and unsafe Water Sources in the dry Season, by Commune, in 2008



Note: Calculated as a percentage of the total number of families in each commune.

3.3.11 Drinking Water Purification by Households, over 3 years

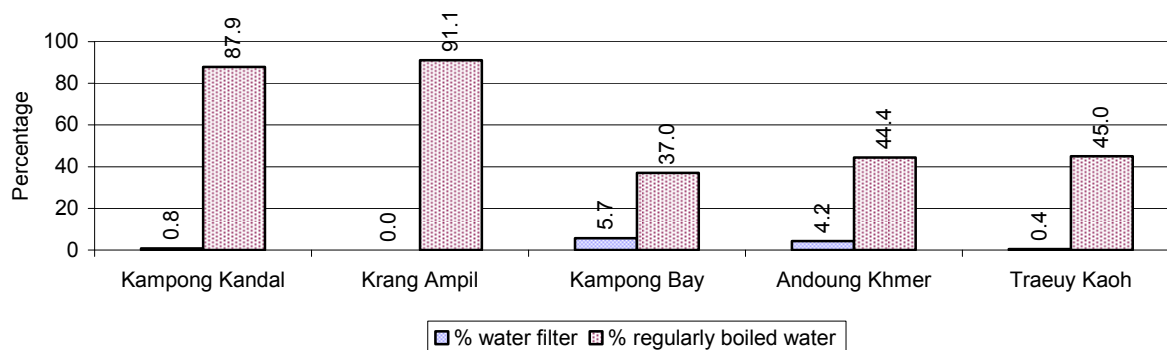
This table shows the different ways families make water safe for drinking.

Families, who:	2006	2007	2008	
	%	%	%	Number
Filter water for drinking	0%	1%	2 %	165 families
Boil water for drinking	54%	56%	59 %	3,972 families

Note: Calculated as a percentage of the total number of families

3.3.12 Percentage Families filtering Water or regularly boiling Water, by Commune, in 2008

This graph shows the different ways families make drinking water safe.



Note: Calculated on as a percentage of the total number of families in each commune.

3.3.13 Families' access to Water, over 3 years

Families access to water	2006	2007	2008	
	%	%	%	Number
Families with water at home or in less than 150m	79%	78%	74 %	4,966 families
Families with water 150m or more away from home	18%	5%	23 %	1,519 families

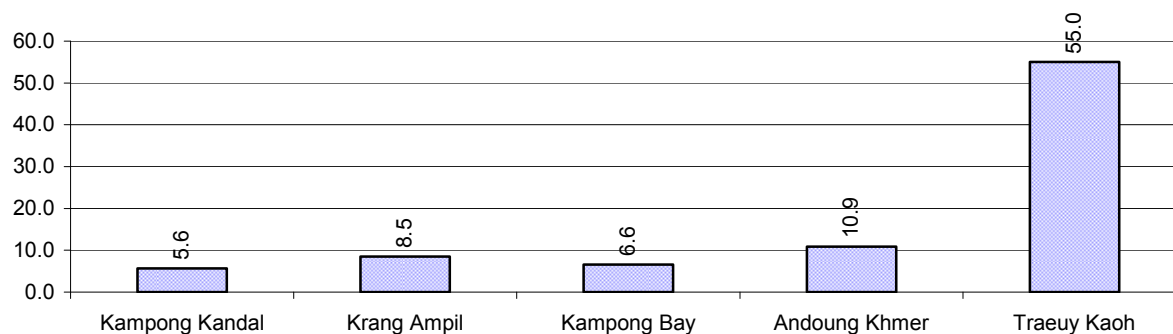
Note: Calculated as a percentage of the total number of families

3.3.14 Ratio of people to Latrines over 3 years

Description	2006 Ratio	2007 Ratio	2008	
			Ratio	Number
Ratio of people to latrines	10.0	10.4	8.9	4,124.0

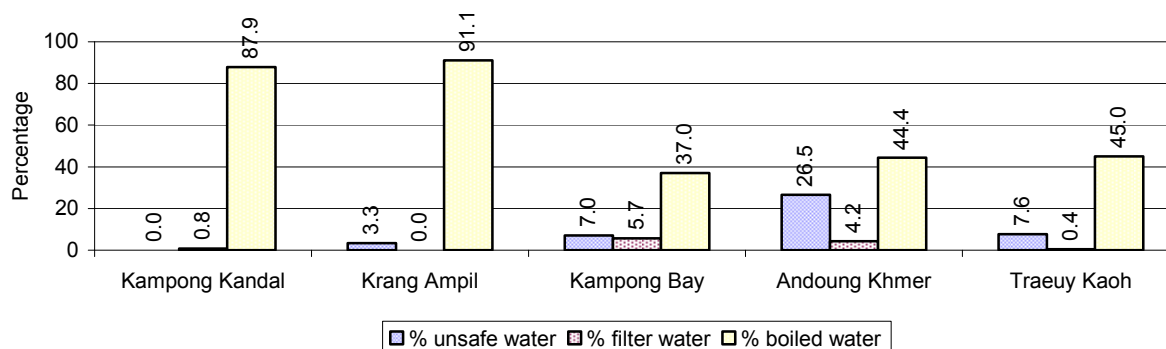
Note: Ratio calculated by dividing the number of houses with latrines by the total population

3.3.15 Ratio of People to Latrines, by Commune, in 2008



Note: Ratio calculated by dividing the number of houses with latrines by the total population in a Commune.

3.3.16 Percentage of Families drinking boiled, filtered or unsafe Water, by Commune, in 2008



Note: Calculated as a percentage of the total number of families in each commune.

3.4 Vulnerable groups

3.4.1 Vulnerable Groups in need of special Protection over 3 years

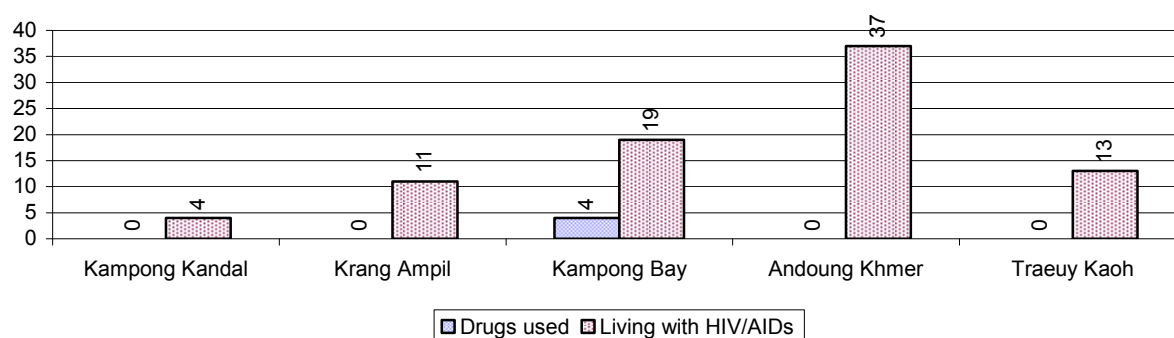
Vulnerable groups	2006	2007	2008
Victims of sexual abuse	0 person(s)	0 person(s)	0 person(s)
Victims of human trafficking	0 person(s)	0 person(s)	0 person(s)
Families with family member(s) using drugs	1 families	20 families	4 families
Families with family member(s) living with HIV/AIDS	83 families	66 families	84 families
Children under 18 yrs old whose parent died of AIDS	108 person(s)	97 person(s)	84 person(s)
Orphaned/abandoned children under 18 yrs old (all cases)	108 person(s)	85 person(s)	95 person(s)
Elderly persons without guardian	53 person(s)	52 person(s)	47 person(s)
Disabled people able to earn an income	29 person(s)	34 person(s)	40 person(s)
Disabled people unable to earn an income	29 person(s)	44 person(s)	62 person(s)

Vulnerable groups	2006	2007	2008
Disabled people under 18 yrs old	25 person(s)	18 person(s)	30 person(s)
Victims of natural disasters	1,323 families	898 families	95 families
Victims of land mines and unexploded weapons	19 person(s)	0 person(s)	1 person(s)

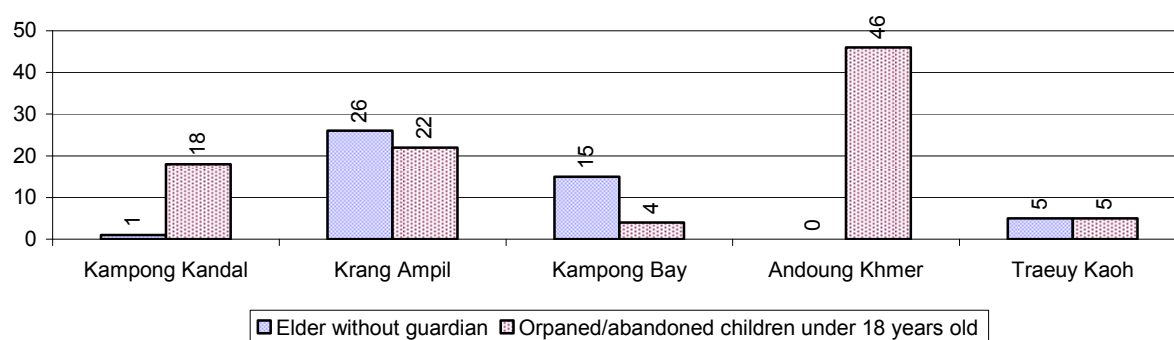
3.4.2 Registered Victims of sexual Abuse or Trafficking, by Commune, for 2008

There were no sexual abuse or trafficking in this District in 2008

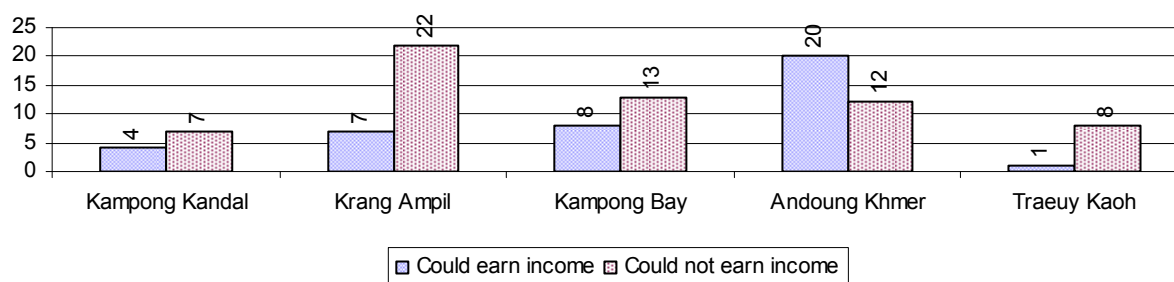
3.4.3 Registered Families with Member(s) using Drugs or living with HIV/AIDS, by Commune, for 2008



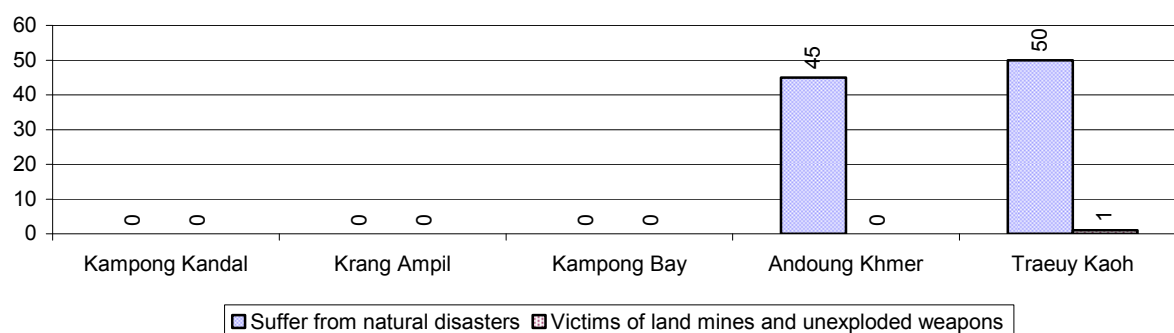
3.4.4 Elderly Persons without a Guardian and orphaned/abandoned Children under 18 years old, by Commune, for 2008



3.4.5 Number of disabled People who could or could not earn an Income, by Commune, for 2008



3.4.6 Number of Families who suffered from natural Disasters, and number of Victims of Land Mines and unexploded Weapons, by Commune, in 2008



3.5 Migration

3.5.1 Migration over 3 years

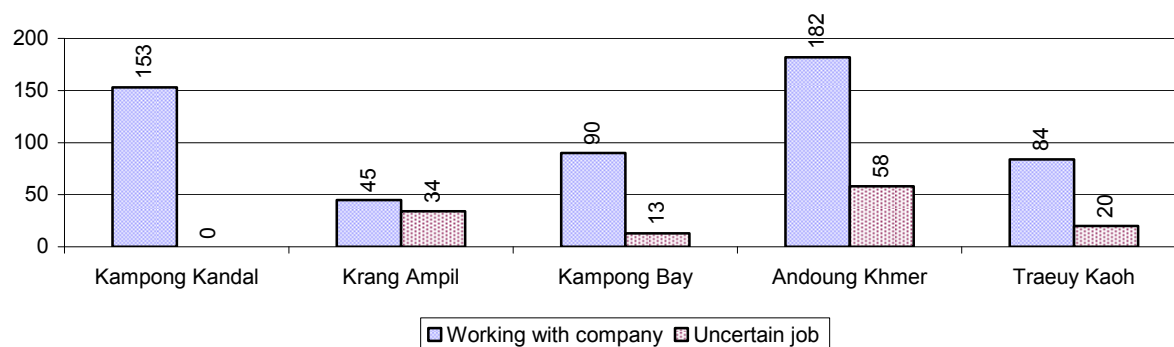
Description	2006	2007	2008
Number of families permanently in-migrated	28 families	25 families	43 families
Total number of people	129 person(s)	92 person(s)	176 person(s)
Total number of female	73 person(s)	43 person(s)	87 person(s)
Number of families permanently out-migrated	69 families	34 families	31 families
Total number of people	361 person(s)	143 person(s)	134 person(s)
Total number of female	141 person(s)	68 person(s)	68 person(s)
Number of families staying temporarily	102 families	88 families	106 families
Total number of people	340 person(s)	243 person(s)	235 person(s)
Total number of female	197 person(s)	145 person(s)	128 person(s)

3.5.2 Job Migration

Description	2006	2007	2008
Number of people migrated to work with company/factory	2%	3%	3%
Number of people migrated to work, but have uncertain jobs	1%	1%	1%

Note: Calculated as a percentage of the total population of 18-60 year olds

3.5.3 Number of People working outside their home Villages in a Company/Factory or with an uncertain Job in 2008

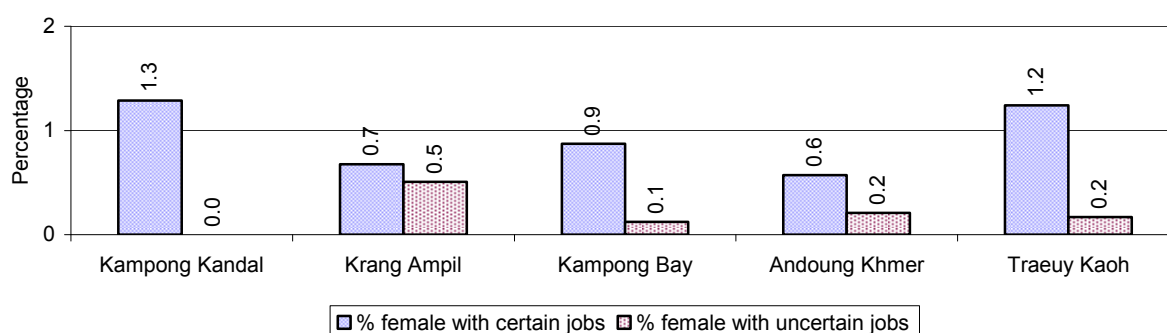


3.5.4 Female migration over 3 years

Description	2006 %	2007 %	2008	
			%	Number
Total number of migrants	1.4%	1.8%	1.9%	679 person(s)
Number of female migrants	0.9%	1.0%	1.1%	396 person(s)
Total number of migrants, who go to work with company/factory (with certain jobs)	1.0%	1.4%	1.5%	554 person(s)
Number of female migrants with certain jobs	0.7%	0.8%	0.9%	330 person(s)
Total number of migrants with uncertain jobs	0.4%	0.4%	0.3%	125 person(s)
Number of female migrants with uncertain jobs	0.2%	0.2%	0.2%	66 person(s)

Note: Calculated as a percentage of the total population

3.5.5 Percentage female Migrants with certain and uncertain Jobs, by Commune, in 2008



Note: Calculated as a percentage of the total population of the commune

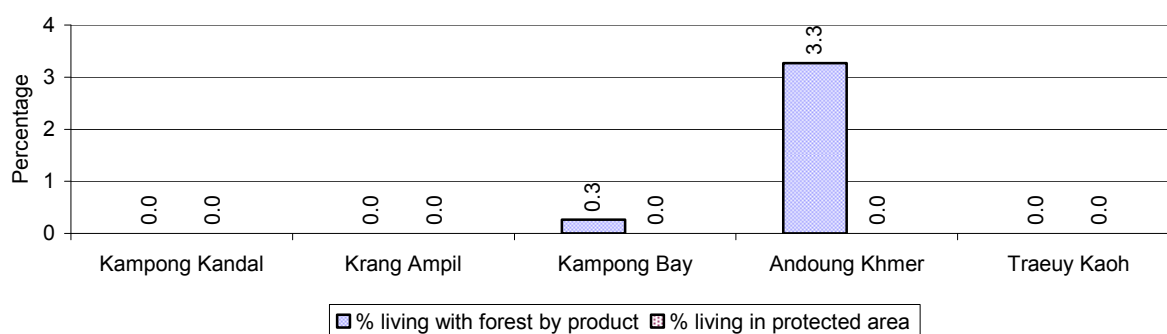
4 Natural Resources and Environment (NRE)

4.1 Families involved with NRE issues over 3 years

Description	2006 %	2007 %	2008	
			%	Number
Families living with forest by products	1 %	1 %	1 %	68 families
Families living in a protected area	6 %	0 %	0 %	0 families
Houses with access to garbage collection service	19 %	26 %	32 %	2,183 families
Families affected by environmental pollution	1 %	1 %	2 %	127 families
Families using chemical fertilizer	17 %	17 %	19 %	1,268 families
Families using chemical pesticide	9 %	14 %	14 %	946 families

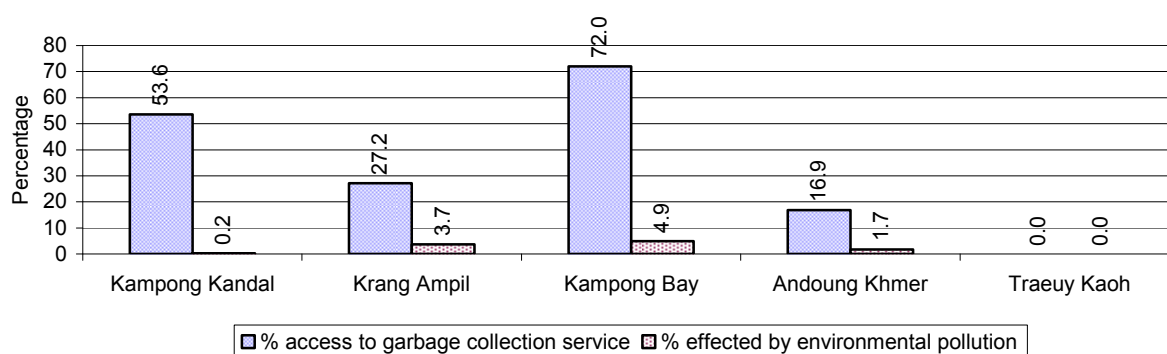
Note: Calculated as a percentage of the total number of families

4.2 Percentage of Families involved with Natural Resource issues, by Commune, for 2008



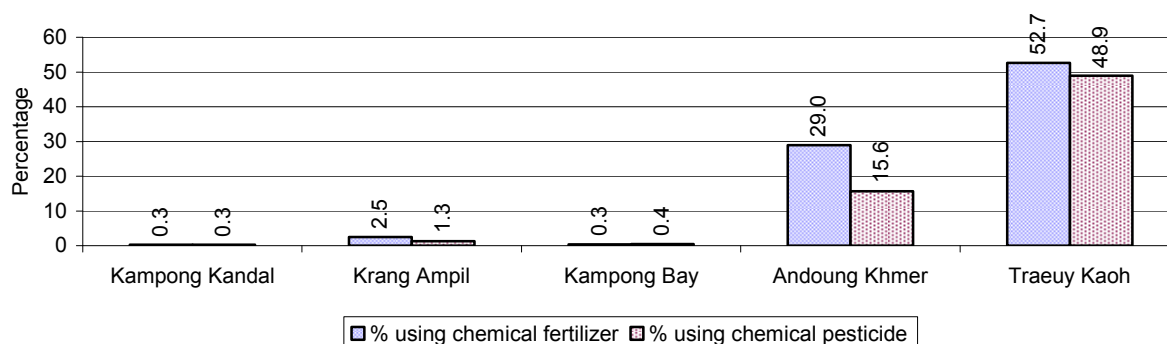
Note: Calculated as a percentage of the number of families in each commune

4.3 Percentage Houses with access to Garbage collection and Families affected by environmental Pollution, by Commune, for 2008



Note: Garbage collection is calculated as a percentage of the total number of houses in each commune and families affected by environmental pollution is calculated as a percentage of the total number of families in each commune.

4.4 Percentage Families using chemical Fertilizer and chemical Pesticides, by Commune, for 2008



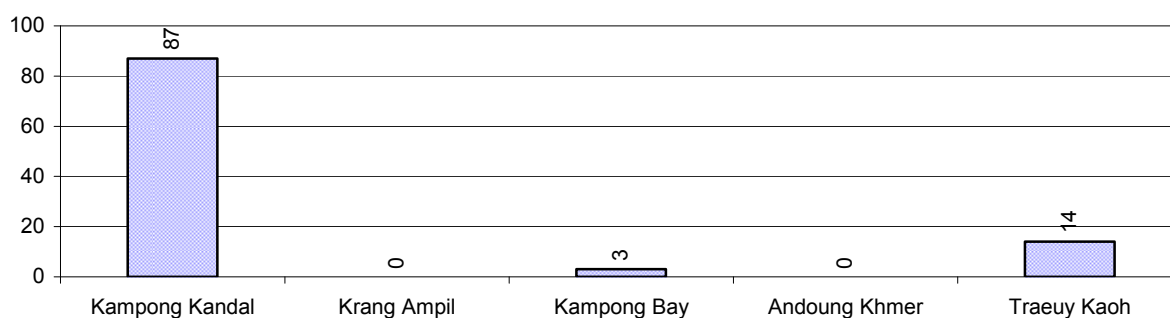
Note: Calculated as a percentage of the total number of families in each commune

5 Administration and Security

5.1 Birth Registration across 3 years

Description	2006	2007	2008
Number of infants to be registered	474 person(s)	410 person(s)	482 person(s)
Number of unregistered infants the year	33 person(s)	56 person(s)	104 person(s)
Percentage of infants unregistered	7 %	14 %	22 %

5.2 Number of unregistered Infants born in 2008, by Commune

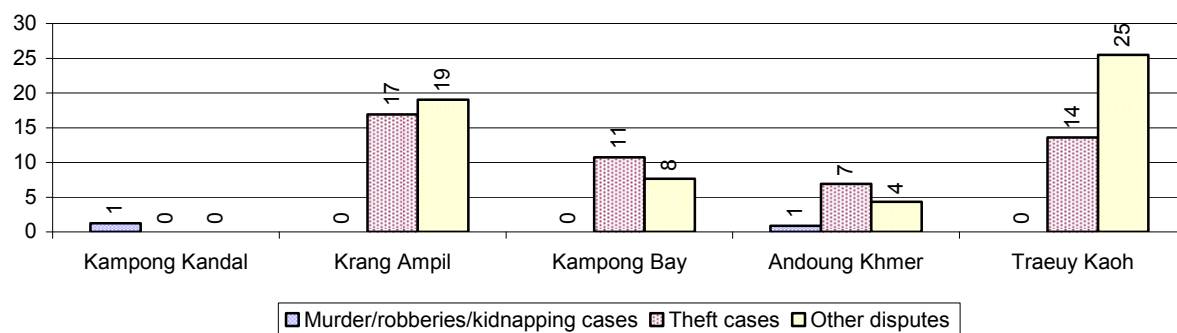


5.3 Registered criminal Cases over 3 years

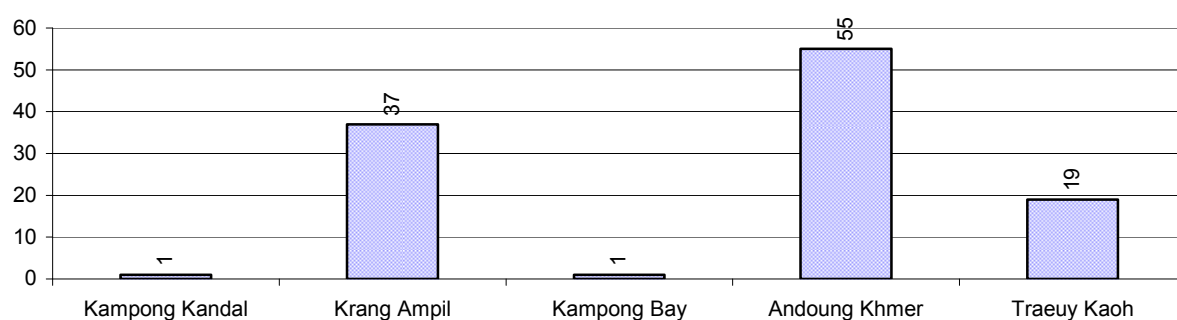
Description	2006	2007	2008
Murders, robberies and kidnapping cases	1 case(s)	1 case(s)	2 case(s)
Theft cases	44 case(s)	39 case(s)	31 case(s)
land dispute cases	86 case(s)	74 case(s)	113 case(s)
Other disputes cases	40 case(s)	54 case(s)	34 case(s)

Note: this reflects only registered criminal cases

5.4 Registered criminal Cases per 10,000 people, by Commune, for 2008



5.5 Number of registered Land Disputes, by Commune, in 2008

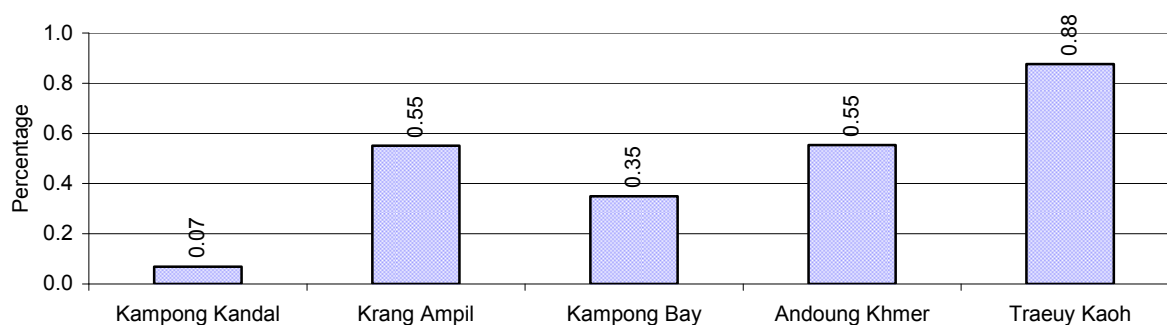


6 Gender

6.1 Registered Domestic Violence over 3 years

Description		2006	2007	2008
Families experiencing domestic violence		90 families	49 families	32 families(s)
% families experiencing domestic violence		1 %	1 %	0 %
Domestic violence cases reported by village chiefs		874 case(s)	76 case(s)	23 case(s)
Type	Physical violence	69 case(s)	29 case(s)	7 case(s)
	Sexual violence	2 case(s)	0 case(s)	3 case(s)
	Mental violence	566 case(s)	24 case(s)	6 case(s)
	Household economic violence	237 case(s)	23 case(s)	7 case(s)
Number of administrative decisions on domestic violence		19 case(s)	26 case(s)	4 case(s)
% of administrative decisions on domestic violence		2 %	34 %	17 %

6.2 Percentage of registered cases of Families experiencing domestic Violence, by Commune, in 2008



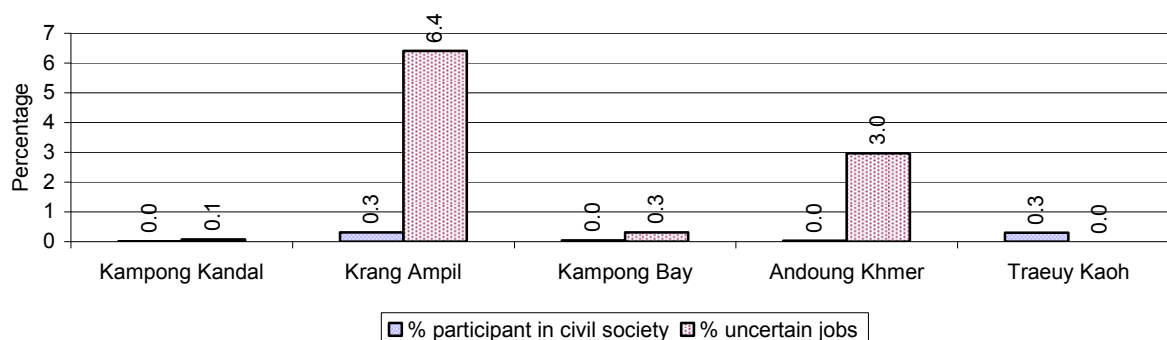
Note: Calculated as a percentage of the total number of families in each commune

6.3 Women's involvement over 3 years

Description	2006 %	2007 %	2008	
			%	Number
People participating in civil society	0%	0%	0%	75 person(s)
Women participating in civil society	0%	0%	0%	41 person(s)
People, 18-60 yrs, with uncertain/irregular jobs	4%	6%	4%	863 person(s)
Women, 18-60 yrs, with uncertain/irregular jobs	2%	3%	2%	363 person(s)

Note: Participation can be in NGOs, CBOs, credit groups, women's unions, parties and other civil society organizations. The first section is calculated as a percentage of the total population. The second section is calculated as a percentage of the total 18-60 year old population.

6.4 Percentage of Female Participants in Civil Society and of 18-60 year women with uncertain Jobs, by Commune, in 2008



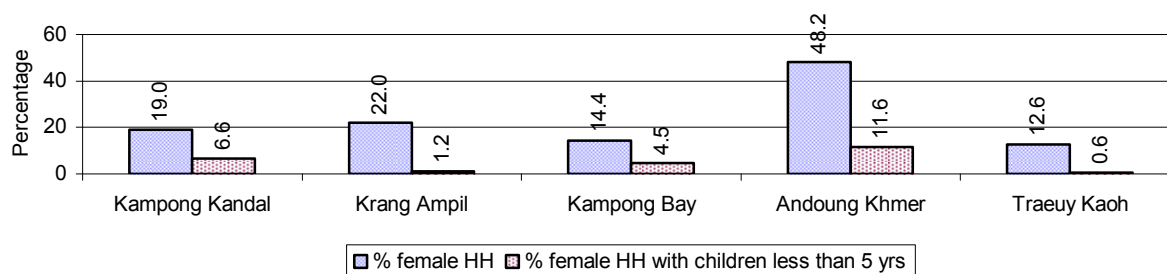
Note: Percentage of female participants in civil society is calculated as a percentage of the total population per commune. The percentage of 18-60 years old women with uncertain jobs is calculated as a percentage of the total 18-60 year old population per commune.

6.5 Female-headed Households over 3 years

Families with:	2006	2007	2008	
	%	%	%	Number
Households in which a woman is the family head	26%	25%	26%	1,757 families
Households in which a woman is the family head with children of less than 5 yrs	6%	5%	6%	397 families

Note: Calculated as a percentage of the total number of families

6.6 Percentage female-headed Households and with Children of less than 5 years old, by Commune, in 2008



Note: Calculated as a percentage of the total number of families in each commune

HH: Headed Household

7 Indigenous People in the District

7.1 Ethnic Minorities in the District over 3 years

Race of indigenous	2006		2007		2008	
	# families	# population	# families	# population	# families	# population
Phnong	0 families	0 person(s)	0 families	0 person(s)	0 families	0 person(s)
Kouy	0 families	0 person(s)	0 families	0 person(s)	0 families	0 person(s)
Stieng	0 families	0 person(s)	0 families	0 person(s)	0 families	0 person(s)
Mil	0 families	0 person(s)	0 families	0 person(s)	0 families	0 person(s)
Kroal	0 families	0 person(s)	0 families	0 person(s)	0 families	0 person(s)
Thmorn	0 families	0 person(s)	0 families	0 person(s)	0 families	0 person(s)
Khaonh	0 families	0 person(s)	0 families	0 person(s)	0 families	0 person(s)
Tompouonn	0 families	0 person(s)	0 families	0 person(s)	0 families	0 person(s)
Charay	0 families	0 person(s)	0 families	0 person(s)	0 families	0 person(s)
Kroeung	0 families	0 person(s)	0 families	0 person(s)	0 families	0 person(s)
Kavet	0 families	0 person(s)	0 families	0 person(s)	0 families	0 person(s)
Saouch	0 families	0 person(s)	0 families	0 person(s)	0 families	0 person(s)
Lun	0 families	0 person(s)	0 families	0 person(s)	0 families	0 person(s)
Kachak	0 families	0 person(s)	0 families	0 person(s)	0 families	0 person(s)
Praov	0 families	0 person(s)	0 families	0 person(s)	0 families	0 person(s)
Others	0 families	0 person(s)	0 families	0 person(s)	0 families	0 person(s)
Total	0 families	0 person(s)	0 families	0 person(s)	0 families	0 person(s)

Note: "Others" refer to other ethnic groups which are not listed.

7.2 Other Minorities in the District over 3 years

Minority	2006		2007		2008	
	# families	# population	# families	# population	# families	# population
Khmer Islamic	1,005 families	5,606 person(s)	803 families	3,718 person(s)	1,102 families	5,413 person(s)
Vietnamese	78 families	282 person(s)	74 families	238 person(s)	97 families	353 person(s)
Laos	0 families	0 person(s)	0 families	0 person(s)	0 families	0 person(s)

Note: Number of indigenous and minority population are additional data, so some village may not recorded.

SECTION C: PLANS AND PROJECTS

8 Priorities and Plans

8.1 Priorities of Commune Councils for 2009 in the District by Sector

The District Priority Activity Matrix (DPAM) data are taken from the CDPD. The DPAM is used for the District Integration Workshop (DIW), to show what kind of projects the commune has proposed in their Commune Investment Plan (CIP) for 2009. Donors, departments and other agencies then consider which projects they want to support and which projects they are not interested in. This results in Temporary Agreements between the Commune Council and the Supporter (NGO, Department, private donor, etc), as shown in table 8.2

No.	Project Name	Kampong Kandal	Krang Ampil	Kampong Bay	Andoung Khmer	Traeuy Kaoh	Req.Project
		70801	70802	70803	70804	70805	Total
Economic							
1	Chemical and pesticide application training	1 training				6 training	2
2	Vegetable growing training				5 training		1
3	Rice field demonstration		2 training				1
4	Rice cultivation technique training	1 training		1 training	4 training	4 training	4
5	Animal vaccination request	3 time		3 time	5 time	12 time	4
6	Village veterinary training	2 training	2 training	2 training	5 training	1 training	5
7	Animal raising training	3 training		2 training			2
8	Pig raising training	3 training	3 training	2 training	5 training		4
9	Chicken raising training	3 training	2 training	2 training	5 training	4 training	5
10	Rice seed request	350 Kg			800 Kg	800 Kg	3
11	Pesticide request	3 time	1 time	2 time	1 time	4 time	5
12	Fish raising training				1 training	4 training	2
13	Road maintenance project	1577 m	1900 m	1367 m	9000 m	2758 m	5
14		375 m	3100 m	400 m	1760 m	985 m	5
15				780 m			1
16		2 place	13 place	2 place	5 place	4 place	5
17		758 m	1110 m		3500 m	1386 m	4
18	Closed dam across canal construction/repair	828 m			1350 m		2
19		750 m	2260 m	1135 m			3
20			620 m			1000 m	2
21						1 place	1
22	Cash credit	2 Team	2 Team	2 Team	5 Team	4 Team	5
23	Livestock bank				190 Head		1
24	Electricity supply	1213 m	1575 m	1000 m	2560 m	3789 m	5

District Data Book 2009: Development Plans and Projects

No.	Project Name	Kampong Kandal	Krang Ampil	Kampong Bay	Andoung Khmer	Traeuy Kaoh	Req.Project
		70801	70802	70803	70804	70805	Total
Social							
1	HIV/AIDS awareness education	3 Tree					1
2	HIV/AIDS infected person assistance	24 person	12 time	17 person	365 day	365 day	5
3	Food quality control			4 time			1
4	Health local service provision for women-children	12 time	64 family	12 Month	317 family	50 family	5
5	Health network creation/strengthening	12 time	12 time		365 day	365 day	4
6	Emergency network creation/operation			12 Month			1
7	Nutrition support	4 time	3 time	3 time	5 time	4 time	5
8	Latrine construction		281 toilet		321 toilet	120 toilet	3
9	KMeragppl;meFüa)aycMeraHTwks¥at				100 Container		1
10	KMeragpÄt;pÄg;Twks¥at	1856 m	1615 m	1783 m	4800 m	3000 m	5
11	Literacy class	2 class	2 class	1 class	5 class	4 class	5
12						2 building	1
13	Kindergarten school construction/repair				3 place		1
14	School enrollment encouragement project	1 time	6 time	4 time	5 time	12 time	5
15	Education for all dissemination			4 time			1
16	School dropped children data collection	1 time	1 time	2 time	5 time	4 time	5
17	Engine/car repairing skill training	23 training		2 training	5 training	2 training	4
18	Electric equipment repair skill training		2 training	2 training	5 training	2 training	4
19	Skill training for the poor/orphan	2 training					1
20	Orphan children assistance/support	4 time	3 time	12 Month			3
21	Vulnerable group aid/support	1 place	1 Team	1 Team	1 Team	4 time	5
22	Vulnerable supporting association formation					1 Team	1
23	Elderly association formation/support	1 place	1 Team	1 place	1 place	1 place	5
NREM							
1	Environmental awareness and law education	2 training	3 training	1 training	2 training	2 training	5
2	Fishery law education					24 time	1
3	Education on the effect of polluted water				5 training		1
4	Community flooded forestry support					2 Forestry Community	1
5	Forest protection strengthening				12 time		1
6	Sewage culvert system construction/rehabilitation	757 m	1700 m	1300 m			3
7	Solving rubbish problems	365 day		365 day			2

District Data Book 2009: Development Plans and Projects

No.	Project Name	Kampong Kandal	Krang Ampil	Kampong Bay	Andoung Khmer	Traeuy Kaoh	Req.Project
		70801	70802	70803	70804	70805	Total
8	Waste dumping creation/improvement		12 time				1
9	Public rubbish bin sitting	126 Garbage bin	200 Garbage bin	125 Garbage bin	130 Garbage bin	15 Garbage bin	5
10	New sewage system construction	1213 m	1250 m	563 m	2673 m		4
11	Market/urban place sanitation control	365 day	365 day	365 day			3
12	Drainage canal construction/rehabilitation			1500 m			1
13	Family waste bin encouragement	135 Garbage bin		125 Garbage bin	120 Garbage bin	100 Garbage bin	4
Administration and Security							
1	Civil registration encouragement		12 time	365 day	5 time	365 day	4
2	Land law dissemination	2 training		2 training	1 time	4 time	4
3	Provision of land titles/certificates	1452 family	127 family	1805 doc	1938 doc	1751 doc	5
4	People guard activities formation/strengthening	12 time	365 day	365 day	365 day	365 day	5
5	Gangs gathering educated for local security		4 time	4 time	5 time	4 time	4
6	Drug business/use prevention	1 training	2 time	2 time	5 time	4 time	5
7	Abused/violated/illegal acts quelled activation	6 time					1
8	Family/temporary dweller record book provision		14 time	12 time			2
9	Identification card issued			1 time			1
10	Penal and civil law dissemination			1 time			1
11	Traffic law and public order dissemination		4 training	4 time	5 time		3
12	Poor household listing preparation/support		1 time	2 time	1 time	4 time	4
Gender							
1	Gender training for CC	1 training	2 training	1 training	1 training	1 training	5
2	Women & Children FP strengthening	2 training		2 training	2 training	2 training	4
3	Tailor skill training		2 training	2 training	5 training	2 training	4
4	Law against domestic violence dissemination	2 time	2 time		5 training	2 time	4
5	Law against trafficking dissemination	1 time	3 time	1 time	2 time	2 time	5

Source: CDPD – District Priority Matrix

8.2 Temporary Agreements by Commune, for 2009²

At the District Integration Workshop (DIW) the Supporters (donors, agencies, private donors, NGOs, etc.) identify which projects/activities they would like to support or they put forward their own projects to be implemented in a particular commune. Once there is agreement between Commune Councils and Supporters on specific projects a **Temporary Agreement** is signed by the commune and the Supporter to show their mutual commitment to the identified projects/activities.

It is important to keep in mind that such Temporary Agreements do not necessarily result in implementation.

8.2.1 Temporary Agreements for 2009 as per DIW 2008 for Commune: Kampong Kandal

Commune GIS	Commune	Temporary Agreements				Supporter	Funding Source	Listed in CIP befor DIW
		Project Name	Quantity	Unit	Est.Cost (K.Riels)			
Economic								
70801	Kampong Kandal		27	Tree	100000	Provincial Office		<input type="checkbox"/>
70801	Kampong Kandal		4200	m2	600000	Provincial Office		<input type="checkbox"/>
70801	Kampong Kandal		9000	m2	600000	Provincial Office		<input type="checkbox"/>
70801	Kampong Kandal		8200	m2	578400	Provincial Office		<input type="checkbox"/>
Social								
70801	Kampong Kandal		1	time	100	Department of Health		<input type="checkbox"/>
70801	Kampong Kandal		1	training	1600	Department of Labor and Vocational Training		<input type="checkbox"/>
70801	Kampong Kandal		12	time	720	Department of Health		<input type="checkbox"/>
70801	Kampong Kandal	HIV/AIDS infected person assistance	12	time	480	Department of Health		✓
70801	Kampong Kandal		2	time	200	Department of Health		<input type="checkbox"/>
70801	Kampong Kandal		12	Month	1400			<input type="checkbox"/>

² Not all the data from the CDPD has been translated to English, this has resulted in some cells in the TA tables being blank.

Commune GIS	Commune	Temporary Agreements				Supporter	Funding Source	Listed in CIP before DIW
		Project Name	Quantity	Unit	Est.Cost (K.Riels)			
70801	Kampong Kandal		1	time	100	Department of Health		<input type="checkbox"/>
70801	Kampong Kandal		12	time	720	Department of Health		<input type="checkbox"/>
70801	Kampong Kandal		12	Month	10000			<input type="checkbox"/>
70801	Kampong Kandal		2	time	200	Department of Health		<input type="checkbox"/>
NREM								
70801	Kampong Kandal	Environmental awareness and law education	2	piece	3200	Department of Environment		✓
Administration and Security								
70801	Kampong Kandal		2	training	1600	Department of Labor and Vocational Training	PIF	<input type="checkbox"/>
70801	Kampong Kandal		2	time	1200	Department of Social and Veteran Affairs and Youth Rehabilitation		<input type="checkbox"/>
Gender								
70801	Kampong Kandal		1	training	1600	Department of Labor and Vocational Training		<input type="checkbox"/>

8.2.2 Temporary Agreements for 2009 as per DIW 2008 for Commune: Krang Ampil

Commune GIS	Commune	Temporary Agreements				Supporter	Funding Source	Listed in CIP before DIW
		Project Name	Quantity	Unit	Est.Cost (K.Riels)			
Economic								
70802	Krang Ampil	Chicken raising training	1	training	3600	Department of Labor and Vocational Training		✓
70802	Krang Ampil	Pig raising training	3	training	10800	Department of Labor and Vocational Training		✓
70802	Krang Ampil		300	m	14000			✓

District Data Book 2009: Development Plans and Projects

Commune GIS	Commune	Temporary Agreements				Supporter	Funding Source	Listed in CIP before DIW
		Project Name	Quantity	Unit	Est.Cost (K.Riels)			
Social								
70802	Krang Ampil		2	time	200	Department of Health		<input type="checkbox"/>
70802	Krang Ampil	Literacy class	1	class	2740	Department of Education Youth and Sports		✓
70802	Krang Ampil	HIV/AIDS infected person assistance	12	time	480	Department of Health		✓
70802	Krang Ampil		1	training	1600	Department of Labor and Vocational Training		<input type="checkbox"/>
70802	Krang Ampil		12	time	480	Department of Health		<input type="checkbox"/>
70802	Krang Ampil		12	Month	14416			<input type="checkbox"/>
70802	Krang Ampil		2	time	200	Department of Health		<input type="checkbox"/>
70802	Krang Ampil		1	time	100	Department of Health		<input type="checkbox"/>
70802	Krang Ampil		1	time	1000	Department of Health		<input type="checkbox"/>
70802	Krang Ampil		12	time	480	Department of Health		<input type="checkbox"/>
70802	Krang Ampil		12	Month	15000			<input type="checkbox"/>
NREM								
70802	Krang Ampil	Environmental awareness and law education	1	time	65000	Department of Environment		✓
70802	Krang Ampil		2	piece	3280	Department of Environment		<input type="checkbox"/>
Administration and Security								
70802	Krang Ampil		2	time	1200	Department of Social and Veteran Affairs and Youth Rehabilitation		<input type="checkbox"/>

8.2.3 Temporary Agreements for 2009 as per DIW 2008 for Commune: Kampong Bay

Commune GIS	Commune	Temporary Agreements				Supporter	Funding Source	Listed in CIP before DIW
		Project Name	Quantity	Unit	Est.Cost (K.Riels)			
Economic								
70803	Kampong Bay	Pig raising training	2	training	7200	Department of Labor and Vocational Training		✓
70803	Kampong Bay	Chicken raising training	1	training	3600	Department of Labor and Vocational Training		✓
Social								
70803	Kampong Bay		2	time	200	Department of Health		☐
70803	Kampong Bay		2	time	200	Department of Health		☐
70803	Kampong Bay		12	time	480	Department of Health		☐
70803	Kampong Bay	Electric equipment repair skill training	1	training	1600	Department of Labor and Vocational Training		✓
70803	Kampong Bay	Literacy class	2	class	2740	Department of Education Youth and Sports		✓
70803	Kampong Bay	HIV/AIDS infected person assistance	12	time	480	Department of Health		✓
70803	Kampong Bay		12	Month	16000			☐
70803	Kampong Bay		12	time	480	Department of Health		☐
70803	Kampong Bay		1	time	1000	Department of Health		☐
70803	Kampong Bay		1	time	100	Department of Health		☐
NREM								
70803	Kampong Bay	Environmental awareness and law education	2	piece	3020	Department of Environment		✓
Administration and Security								
70803	Kampong Bay		2	time	120	Department of Social and Veteran Affairs and Youth Rehabilitation		☐

Commune GIS	Commune	Temporary Agreements				Supporter	Funding Source	Listed in CIP befor DIW
		Project Name	Quantity	Unit	Est.Cost (K.Riels)			
Gender								
70803	Kampong Bay		1	training	1600	Department of Labor and Vocational Training		<input type="checkbox"/>

8.2.4 Temporary Agreements for 2009 as per DIW 2008 for Commune: Andoung Khmer

Commune GIS	Commune	Temporary Agreements				Supporter	Funding Source	Listed in CIP befor DIW
		Project Name	Quantity	Unit	Est.Cost (K.Riels)			
Economic								
70804	Andoung Khmer		1	training	1845	Kampot Institute of Polytechnique (KIP)		<input type="checkbox"/>
70804	Andoung Khmer		2	training	3526	Kampot Institute of Polytechnique (KIP)		<input type="checkbox"/>
70804	Andoung Khmer	Vegetable growing training	1	training	2020	Department of Agriculture Forestry and Fisheries		✓
70804	Andoung Khmer		2	training	3280	Kampot Institute of Polytechnique (KIP)		<input type="checkbox"/>
70804	Andoung Khmer		5	village	2800			<input type="checkbox"/>
70804	Andoung Khmer		1	training	480	Kampot Institute of Polytechnique (KIP)		<input type="checkbox"/>
70804	Andoung Khmer		1	training	1640	Kampot Institute of Polytechnique (KIP)		<input type="checkbox"/>
Social								
70804	Andoung Khmer		1	time	1500	Department of Health		<input type="checkbox"/>
70804	Andoung Khmer		1	time	1500	Department of Health		<input type="checkbox"/>
70804	Andoung Khmer		12	time	1500	Department of Health		<input type="checkbox"/>
70804	Andoung Khmer		2	time	2000	Department of Health		<input type="checkbox"/>

District Data Book 2009: Development Plans and Projects

Commune GIS	Commune	Temporary Agreements				Supporter	Funding Source	Listed in CIP before DIW
		Project Name	Quantity	Unit	Est.Cost (K.Riels)			
70804	Andoung Khmer		1	training	984	Kampot Institute of Polytechnique (KIP)		<input type="checkbox"/>
70804	Andoung Khmer		2	time	1300	Department of Health		<input type="checkbox"/>
70804	Andoung Khmer		12	Month	265844			<input type="checkbox"/>
70804	Andoung Khmer		20	toilet	2800			<input type="checkbox"/>
70804	Andoung Khmer		1	training	697	Kampot Institute of Polytechnique (KIP)		<input type="checkbox"/>
70804	Andoung Khmer		12	time	480	Department of Health		<input type="checkbox"/>
70804	Andoung Khmer		1	training	656	Kampot Institute of Polytechnique (KIP)		<input type="checkbox"/>
70804	Andoung Khmer	HIV/AIDS infected person assistance	12	time	4800	Department of Health		✓
70804	Andoung Khmer		1	training	1312	Kampot Institute of Polytechnique (KIP)		<input type="checkbox"/>
70804	Andoung Khmer	Literacy class	3	class	8022	Department of Education Youth and Sports		✓
70804	Andoung Khmer		12	Month	5166			<input type="checkbox"/>
Administration and Security								
70804	Andoung Khmer		12	Month	12500	Department of Social and Veteran Affairs and Youth Rehabilitation		<input type="checkbox"/>
70804	Andoung Khmer		3	time	1800	Department of Social and Veteran Affairs and Youth Rehabilitation		<input type="checkbox"/>
Gender								
70804	Andoung Khmer		1	training	1763	Kampot Institute of Polytechnique (KIP)		<input type="checkbox"/>
70804	Andoung Khmer		1	training	2132	Kampot Institute of Polytechnique (KIP)		<input type="checkbox"/>

Commune GIS	Commune	Temporary Agreements				Supporter	Funding Source	Listed in CIP before DIW
		Project Name	Quantity	Unit	Est.Cost (K.Riels)			
70804	Andoung Khmer		1	training	2173	Kampot Institute of Polytechnique (KIP)		<input type="checkbox"/>

8.2.5 Temporary Agreements for 2009 as per DIW 2008 for Commune: Traeuy Kaoh

Commune GIS	Commune	Temporary Agreements				Supporter	Funding Source	Listed in CIP before DIW
		Project Name	Quantity	Unit	Est.Cost (K.Riels)			
Economic								
70805	Traeuy Kaoh		1	time	5800	WildAid		<input type="checkbox"/>
Social								
70805	Traeuy Kaoh		20	toilet	24600			<input type="checkbox"/>
70805	Traeuy Kaoh		12	Month	14350			<input type="checkbox"/>
70805	Traeuy Kaoh		12	time	480	Department of Health		<input type="checkbox"/>
70805	Traeuy Kaoh		12	time	120	Department of Health		<input type="checkbox"/>
70805	Traeuy Kaoh		1	time	120	Department of Health		<input type="checkbox"/>
70805	Traeuy Kaoh		1	time	120	Department of Health		<input type="checkbox"/>
70805	Traeuy Kaoh		2	time	200	Department of Health		<input type="checkbox"/>
70805	Traeuy Kaoh		2	time	200	Department of Health		<input type="checkbox"/>
70805	Traeuy Kaoh		12	time	960	Department of Health		<input type="checkbox"/>
70805	Traeuy Kaoh		1	training	1600	Department of Labor and Vocational Training		<input type="checkbox"/>
70805	Traeuy Kaoh	Literacy class	2	class	3664	Department of Education Youth and Sports		✓

Commune GIS	Commune	Temporary Agreements				Supporter	Funding Source	Listed in CIP before DIW
		Project Name	Quantity	Unit	Est.Cost (K.Riels)			
NREM								
70805	Traeuy Kaoh		2	Fishing Community	6000	WildAid		<input type="checkbox"/>
Administration and Security								
70805	Traeuy Kaoh		3	time	180	Department of Social and Veteran Affairs and Youth Rehabilitation		<input type="checkbox"/>
70805	Traeuy Kaoh		3	time	984	Department of Labor and Vocational Training	PIF	<input type="checkbox"/>

Source: CDPD, District Level Detail TA resulting from DIW

8.3 Outputs, estimated and actual costs of C/S Fund Projects between 2005 and 2008, by Commune

Commune	Project Type	Budget Year	Output		Quantity	Unit	Unit Cost MR	
			Description	Type			Estimate	Actual
Kampong Kandal	Rural Transport	2005	Laterite road	New	1.9	Km	22.25	3.38
Kampong Kandal	Rural Transport	2005	Single pipe culvert	New	1	Place	1.53	17.58
Kampong Kandal	Rural Transport	2005	Single pipe culvert	New	1	Place	1.98	13.37
Kampong Kandal	Rural Transport	2006	Earth road	Repair	0.506	Km	27.09	27.09
Kampong Kandal	Rural Transport	2006	Single pipe culvert	New	2	Place	2.71	2.68
Kampong Kandal	Rural Transport	2007	Laterite road	Repair	0.85	Km	28.66	28.40
Kampong Kandal	Rural Transport	2008	Laterite road	New	0.63	Km	12.74	12.64
Krang Ampil	Rural Transport	2005	Earth road	Repair	0.45	Km	12.20	12.43
Krang Ampil	Rural Transport	2005	Single pipe culvert	New	1	Place	2.35	3.48
Krang Ampil	Rural Transport	2006	Laterite road	New	1.665	Km	7.86	17.93
Krang Ampil	Rural Transport	2006	Single pipe culvert	New	4	Place	5.35	5.32
Krang Ampil	Rural Transport	2007	Laterite road	New	0.19	Km	2.34	2.29
Krang Ampil	Rural Transport	2007	Earth road	Repair	0.4	Km	19.98	18.38
Krang Ampil	Rural Transport	2007	Single pipe culvert	New	2	Place	3.12	3.10
Krang Ampil	Rural Transport	2008	Laterite road	New	0.77	Km	22.85	22.50
Krang Ampil	Rural Transport	2008	Laterite road	New	0.19	Km	2.34	2.30
Krang Ampil	Rural Transport	2008	Earth road	Repair	0.3	Km	19.98	19.70

Commune	Project Type	Budget Year	Output		Quantity	Unit	Unit Cost MR	
			Description	Type			Estimate	Actual
Kampong Bay	Rural Transport	2005	Single pipe culvert	New	5	Place	7.46	7.40
Kampong Bay	Rural Transport	2005	Laterite road	New	0.795	Km	9.36	11.51
Kampong Bay	Rural Transport	2006	Earth road	Repair	0.35	Km	25.30	25.30
Kampong Bay	Rural Transport	2006	Single pipe culvert	New	1	Place	1.32	1.30
Kampong Bay	Rural Transport	2007	Earth road	Repair	0.35	Km	29.27	28.99
Kampong Bay	Rural Transport	2008	Laterite road	New	0.42	Km	28.65	28.52
Andoung Khmer	Rural Transport	2005	Earth road	New	0.85	Km	14.59	1.90
Andoung Khmer	Rural Transport	2005	Laterite road	New	0.85	Km	8.67	18.78
Andoung Khmer	Rural Transport	2006	Laterite road	New	1.33	Km	28.63	32.23
Andoung Khmer	Rural Transport	2006	Single pipe culvert	New	3	Place	4.12	4.08
Andoung Khmer	Rural Transport	2007	Double pipe culvert	New	1	Place	2.56	4.10
Andoung Khmer	Rural Transport	2007	Earth road	Repair	1.3	Km	29.87	29.40
Andoung Khmer	Rural Transport	2007	Single pipe culvert	New	1	Place	1.62	4.10
Andoung Khmer	Rural Transport	2008	Laterite road	New	0.51	Km	35.52	35.45
Traeuy Kaoh	Rural Transport	2005	Laterite road	Repair	1.919	Km	21.09	14.76
Traeuy Kaoh	Rural Transport	2006	Laterite road	New	2.771	Km	23.33	26.05
Traeuy Kaoh	Rural Transport	2007	Laterite road	New	0.85	Km	9.28	9.26
Traeuy Kaoh	Rural Transport	2007	Earth road	Repair	0.4	Km	15.20	15.00
Traeuy Kaoh	Rural Transport	2008	Earth road	Repair	0.55	Km	27.43	27.20

Source: PID

8.4 Total Expenditure on C/S Fund Projects by sector and commune between 2005 and 2008

Sector	Total Cost in Million Riels				
	Kampong Kandal	Krang Ampil	Kampong Bay	Andoung Khmer	Traeuy Kaoh
Rural Transport	105.14	107.42	103.02	125.94	92.27

Source: PID

8.5 Actual 2009 C/S Fund projects by Commune

Commune	Project Type	Project Output		Quantity	Unit	Fund Source (Riels)		
		Description	Type			Total	C/S	Local Contribution
Sangkat Kampong Kandal	Rural Transport	Laterite road	Upgrade	1.088	km	42,700,000	42,700,000	0
Sangkat Kampong Kandal	Rural Transport	Laterite road	Upgrade	2.062	km	42,700,000	42,700,000	0
Sangkat Krang Ampil	Rural Transport	Single pipe culvert 0.6m diameter	New	1	Place	40,000,000	40,000,000	0
Sangkat Krang Ampil	Rural Transport	Single pipe culvert 0.6m diameter	New	1	Place	40,000,000	40,000,000	0
Sangkat Krang Ampil	Rural Transport	Single pipe culvert 0.8m diameter	New	3	Place	40,000,000	40,000,000	0
Sangkat Krang Ampil	Rural Transport	Single pipe culvert 0.8m diameter	New	1	Place	40,000,000	40,000,000	0
Sangkat Krang Ampil	Rural Transport	Double pipe culvert 1.0m diameter	New	1	Place	40,000,000	40,000,000	0
Sangkat Kampong Bay	Rural Transport	Laterite road	Upgrade	0.578	km	30,887,540	30,887,540	0
Sangkat Kampong Bay	Rural Transport	Laterite road	Upgrade	1.025	km	30,887,540	30,887,540	0
Sangkat Kampong Bay	Rural Transport	Single pipe culvert 0.6m diameter	New	1	Place	30,887,540	30,887,540	0
Sangkat Kampong Bay	Rural Transport	Single pipe culvert 0.8m diameter	New	3	Place	30,887,540	30,887,540	0
Sangkat Andoung Khmer	Rural Transport	Laterite road	Upgrade	0.55	km	49,913,000	49,378,000	535,000
Sangkat Andoung Khmer	Rural Transport	Laterite road	Upgrade	0.375	km	49,913,000	49,378,000	535,000
Sangkat Andoung Khmer	Rural Transport	Laterite road	Repair	0.316	km	18,391,381	18,391,381	0
Sangkat Andoung Khmer	Rural Transport	Single pipe culvert 1.0m diameter	New	1	Place	18,391,381	18,391,381	0
Sangkat Traeuy Kaoh	Rural Transport	Earth road	Repair	0.522	km	30,856,945	30,856,945	0
Sangkat Traeuy Kaoh	Rural Transport	Single pipe culvert 1.0m diameter	New	1	Place	30,856,945	30,856,945	0
Sangkat Traeuy Kaoh	Rural Transport	Single pipe culvert 0.8m diameter	New	2	Place	30,856,945	30,856,945	0

Source: PID

9 District level Projects from 2006 to 2009

District Initiative Projects (DIPs) are funded by Danida, DFID and PSDD (UNDP, DFID and SIDA).

Funding for 2006-2008

Between 2006 and 2008 there were 14 provinces funded by PSDD and 10 by Danida and DFID. The list of provinces and who funded these is below

Danida and DFID funded DIPs:

Kampong Cham	Kampong Speu	Koh Kong	Kratie	Monduliri
Pursat	Ratanakiri	Siem Reap	Sihanoukville	Kep

PSDD funded DIPs:

Banteay Meanchey	Battambang	Kampong Chhnang	Kandal	Phnom Penh
Prey Veng	Svay Rieng	Takeo	Kampong Thom	Preah Vihear
Stung Treng	Kampot	Oddar Meanchey	Pailin	

Funding for 2009

In 2009 there was a change to the number of provinces funded by the two streams. Danida and DFID were still funding the same 10 provinces they had been funding the previous three years, but two more provinces were added *Kampong Thom and Kampot*. Now PSDD funds 12 provinces and Danida and DFID fund 12.

9.1 District Initiative Infrastructure Projects from 2006 to 2009

9.1.1 District Initiative Infrastructure Projects for 2006 to 2008

Date	Project Name	Implementing Agencies	Budget (US\$)	Project Output & Capacity	Number of Beneficiaries
2007	Repair earth and laterite roads	Inter-commune	7,235.00		
2008	Laterite road rehabilitation	Inter-commune	7,482.69	650m	1 commune

9.1.2 District Initiative Infrastructure Projects in 2009

No District Initiative Infrastructure Projects have been implemented in this district for 2009

9.2 District Initiative Service Projects from 2006 to 2009

9.2.1 District Initiative Service Projects for 2006 to 2008

Date	Project Names	Implementing agencies	Budget (US\$)	Project Output & Capacity	Number of Beneficiaries
2007	Produce environment posters	District Environment	800.00		
2007	Training on land law	District Land	1,020.00		
2007	Fruit tree planting	District Environment	530.00		
2007	Training on sewing skill for poor and vulnerable women	District WA	1,638.00		
2008	Training on compost making	District AGRI	792.00	8 courses	8 communes, 240 people
2008	Dissemination on environment protection law	District Environment	1,134.00	8 communes	8 communes, 320 people
2008	Vocational training on sewing	District WA	1,758.00	1 course	6 communes, 15 people

9.2.2 District Initiative Service Projects in 2009

No District Initiative Service Projects have been implemented in this district for 2009

9.3 Inter Commune Council Projects in 2008 and 2009

9.3.1 ICC Projects in 2008

Districts	Project Location	Beneficiary Commune/ Sangkat	Outputs	Project Size	Unit	Contract Cost	Fund Sources	
							ICC Fund	Community
Dang Tong & Kampot	Laang, prey thnang, Traping Pring,	Laang, prey thnang, Traping Pring,	Laterite road construction	6740	Metre	\$100,913.00	\$100,000.00	\$1,100.00
			Single road culvert construction	3	Unit			
			Single road culvert construction	1	Unit			
			Single road culvert construction	1	Unit			
			Twin road culvert	2	Unit			
			Twin box road culvert	1	Unit			
Total for Dang Tong & Kampot						\$100,913.00	\$100,000.00	\$1,100.00
Chhuk & Chumkiri	Taken, Chumpuvann, Trapang Plang	Taken, Chumpuvann, Trapang Plang	Earth road construction	3198	Metre	\$71,468.00	\$71,000.00	\$500.00
			Twin road culvert	2	Unit			
			Singlebox road culvert construction	2	Unit			
			Concrete Bridge	1	Unit			
Total for Chhuk & Chumkiri						\$71,468.00	\$71,000.00	\$500.00
Total Kampot Province						\$172,381.00	\$171,000.00	\$1,600.00

9.3.2 ICC Projects in 2009

Districts	Project Location	Beneficiary Commune/ Sangkat	Outputs	Project Size	Unit	Contract Cost	Fund Sources	
							ICC Fund	Community
Chum Kiri	Srae Chaeng, Srae Knong, Srae Samraong, Chres	Srae Chaeng, Srae Knong, Srae Samraong, Chres		80	Family	\$6,215.00	\$6,215.00	\$0.00
Total for Chumkiri						\$6,215.00	\$6,215.00	\$0.00
Chhuk	Satv Pong, Baniev	Satv Pong, Baniev	System of Rice Intensification	54	Family	\$2,160.00	\$2,160.00	\$0.00
Total for Chhuk						\$2,160.00	\$2,160.00	\$0.00
Total for Kampot						\$8,375.00	\$8,375.00	\$0.00

Source: ICC project, Ministry of Interior (DoLA), -UNDP project for Local Governance – DDLG

9.4 Other Projects in 2008 and 2009

9.4.1 RPRP

There are no RPRP projects being implemented in this district or province at this time. The RPRP is only being implemented in Svay Rieng and Prey Veng

9.4.1.1 RPRP Projects from 2006 to 2008

No RPRP projects in this district at this time

9.4.1.2 RPRP Projects in 2009

No RPRP projects in this district at this time

9.4.2 Seth Korma

9.4.2.1 Seth Koma 2007

There are no Seth Korma projects being implemented in this district or province at this time.

Source: UNICEF

9.4.2.2 Seth Koma 2008

There are no Seth Korma projects being implemented in this district or province at this time.

Source: UNICEF

9.4.2.3 Seth Koma 2009

There are no Seth Korma projects being implemented in this district or province at this time.

Source: UNICEF

SECTION D: SERVICES AND ORGANIZATIONS

10 Infrastructure

10.1 Length of and Expenditure on Roads in 2008, by District

Roads	KAM	Angkor Chey	Banteay Meas	Chhuk	Chumkiri	Dong Tong	Kampong Trach	Teuk Chhou	Kampot
Length of paved road in the district	184	18	33	26	0	7	17	64	20
Length of unpaved roads in the district	1,805	249	271	324	179	188	392	149	53
Amount spent on construction of roads in 2008	635,359	83,426	64,437	134,254	41,880	58,062	106,427	115,287	31,586
Amount spent on repair and rehabilitation of roads in 2008	38,827	8,900	4,788	6,497	2,962	2,999	6,873	3,684	2,125

Note 1: Please note that these data are not necessarily complete or correct. The data are derived from government agencies at provincial and district level which used different recording systems, did not always have complete data or were, sometimes, less than willing to share their data.

Note 2: Please be aware that these data are incomplete due to the fact that the amounts for the construction, repair and rehabilitation recorded reflect only funds provided by the government, not the contributions by any other parties.

10.2 Scale of and Expenditure on Irrigation in 2008, by District

Irrigation	KAM	Angkor Chey	Banteay Meas	Chhuk	Chumkiri	Dong Tong	Kampong Trach	Teuk Chhou	Kampot
Number of irrigation schemes operating in 2008	22	0	3	6	4	0	3	6	0
Total nr of hectares under irrigation in dry season 2008	5,026	0	2,267	192	2,329	0	81	157	0
Total funds spent in 2008 on construction of irrigation systems	2,280,239	0	n/a	479,039	300,000	0	1,200	1,500,000	0
Total funds spent in 2008 on rehabilitation/repair of irrigation systems	5,500	0	n/a	500	5,000	0	0	0	0
Total funds spent in 2008 on operation and maintenance	325	0	n/a	0	325	0	0	0	0

Note 1: Please note that these data are not necessarily complete or correct. The data are derived from government agencies at provincial and district level which used different recording systems, did not always have complete data or were, sometimes, less than willing to share their data.

Note 2: Please be aware that the data above are incomplete as these only reflect funds provided by the government, not the contributions by farmers or other parties.

10.3 Power Supply in 2008, by District

Electricity	KAM	Angkor Chey	Banteay Meas	Chhuk	Chumkiri	Dong Tong	Kampong Trach	Teuk Chhou	Kampot
Total number of electricity connections to households	12,375	450	1,167	800	170	0	2,304	3,126	4,358
Total number of electricity connections to agencies, companies, organizations	158	8	8	5	4	0	8	5	120
Total volume in KWh of electricity consumed last in 2008	4,632,402	120,000	193,920	96,000	1,360	0	2,053,244	181,950	1,985,928
Total amount collected from users for consumed electricity	1,533,244	75,000	95,422	55,000	1,020	0	333,652	427,019	546,130
Per capita electricity consumption in 2008 in Kwh	36	5	1	3	7	0	n/a	6	140

Note 1: Please note that these data are not necessarily complete or correct. The data are derived from government agencies at provincial and district level which used different recording systems, did not always have complete data or were, sometimes, less than willing to share their data.

Note 2: These data only record electricity provided by electricity companies and does not include homes powered by generators or batteries (for this information see Section B: General Profile, Part 1: General Information; table 1.3.1 and chart 1.3.4).

Note 3: In most provinces electricity is only provided through town-based networks

Note 4: Per capita consumption is calculated by dividing the total volume of electricity produced in 2008 by the number of people living in each district as per the 2008 census (for the provincial data it is calculated against the number of people living in the province)

11 Health Facilities

Please note that the Operational District (health) boundaries are different to the administrative district boundaries. Therefore the data provided here shows the facilities, staff, NGOs etc in each Operational District within the province NOT the administrative district.

Acronyms

Com Cov	Commune Covered	MW2	Secondary Midwives
CPA	Complementary Package of Activities	NU1	Primary Nurse
Dr	Doctor	NU2	Secondary Nurse
FDH	Former District Hospital	OD	Operational District
HC	Health Center	Others	Other Staff
HC (NB)	Health Center no building	PHD	Provincial Health Department
HP	Health Post	Pop 04-05	Population Covered 2004 or 2005
MA	Medical Assistant	RH	Referral Hospital
MPA	Minimum Package of Activities	Vil Cov	Village Covered
MW1	Primary Midwives	VIL-HC	Distance from Village to Health Center

11.1 Health Facilities in the Province, by Operational District

Kompot	OD	RH	HC	HP
Angkor Chey	1	1	10	
Chhouk	1	1	15	
Kampong Trach	1	1	12	
Kompot	1	1	10	
Total	4	4	47	0

11.2 Health Facilities and Staff in the province, by Operational District

This table shows health facilities, staff and coverage of health facilities in each operational district.

No	Facility Name	Type	Class	Dr	Ma	Nu2	Nu1	Mw2	Mw1	Others	Com Cov	Vil Cov	Pop. 04-05
Angkor Chey													
1	Ang Phnom Toch	HC	MPA	0	0	1	2	1	1	0	2	9	8,945
2	Champey	HC	MPA	0	0	1	2	2	1	1	2	15	16,287
3	Dambouk Khpos	HC	MPA	0	0	1	2	0	0	2	1	8	11,383
4	Dan Koum	HC	MPA	0	0	0	0	0	2	3	1	9	10,386
5	Doeum Daung	HC	MPA	0	0	2	2	0	0	2	2	10	7,663

District Data Book 2009: Services and Organizations

No	Facility Name	Type	Class	Dr	Ma	Nu2	Nu1	Mw2	Mw1	Others	Com Cov	Vil Cov	Pop. 04-05
6	Prapthnum	HC	MPA	0	0	1	2	0	1	0	2	15	10,060
7	Samraong	HC	MPA	0	0	2	0	2	0	1	2	11	12,267
8	Tani	HC(NB)	None	0	0	1	2	0	1	3	2	13	16,679
9	Trapeang Sala	HC	MPA	0	0	0	2	0	2	0	2	10	10,009
Total:				0	0	9	14	5	8	12	16	100	103,679
Chhouk													
1	Voat Angk	HC	MPA	0	0	0	1	0	0	4	2	10	12,773
2	Angkor Meas	HC	MPA	0	0	2	2	0	0	1	2	8	11,207
3	Baniev	HC	MPA	0	0	1	1	1	1	1	2	10	11,361
4	Chres	HC	MPA	0	0	1	0	0	0	2	2	10	11,045
5	Chumpu Voan	HC	MPA	0	0	2	1	0	1	2	2	8	7,661
6	Dang Tong	FDH	CPA+MPA	0	0	5	2	1	2	3	3	17	15,281
7	Koh Sla	HC	MPA	0	0	1	0	0	0	7	2	18	13,789
8	Kraing Snay	HC	MPA	0	0	1	1	2	0	3	1	6	10,458
9	Mean Chey	HC	MPA	0	0	0	0	0	0	1	2	9	10,004
10	Preah Theat Raingsey	HC	MPA	0	0	1	0	0	1	1	3	9	12,122
11	Satv Pong (Chhouk)	HC	MPA	0	1	0	1	1	0	1	2	8	13,688
12	Srae Chaeng	HC	MPA	0	0	1	0	0	0	3	3	12	16,293
13	Totung	HC	MPA	0	0	1	0	1	0	2	2	14	10,748
14	Tramaeng	HC	MPA	0	0	1	3	0	1	2	2	10	12,268
15	Trapeang Reang	FDH	CPA+MPA	0	1	1	2	1	2	5	2	10	11,081
Total:				0	2	18	14	7	8	38	32	159	179,779
Kampong Trach													
1	Voat Koy	HC(NB)	None	0	0	0	1	0	0	0	2	9	12,091
2	Banteay Meas	HC	MPA	0	0	3	1	2	1	0	2	17	16,571
3	Boeng Sala	HC	MPA	0	0	1	1	2	0	0	2	7	15,330
4	Damnak Kantuot	HC	MPA	0	0	0	2	0	1	1	3	9	14,921
5	Kampong Trach	HC	MPA	0	1	3	1	2	1	0	2	11	16,610
6	Kanthaor	HC	MPA	0	0	1	1	0	2	0	3	16	13,112
7	Preaek Kroes	HC	MPA	0	1	2	0	0	0	0	2	12	12,312
8	Russei Srok	HC	MPA	0	0	0	3	1	0	0	2	10	15,234
9	Sdach Kong	HC	MPA	0	0	1	2	2	0	0	3	13	13,667
10	Srae Chea	HC	MPA	0	0	1	1	0	1	2	3	9	9,727
11	Svay Tong	HC	MPA	0	0	1	0	1	0	2	2	9	8,363

No	Facility Name	Type	Class	Dr	Ma	Nu2	Nu1	Mw2	Mw1	Others	Com Cov	Vil Cov	Pop. 04-05
12	Tnaot Chong Srang	HC	MPA	0	0	1	3	1	0	0	1	10	9,065
Total:				0	2	14	16	11	6	5	27	132	157,003
Kampot													
1	Tuk Meas	FDH	CPA+MPA	1	0	7	2	3	1	1	3	15	17,035
2	Chakkrei Ting (Voat Pralay)	HC	MPA	0	0	1	2	1	0	3	2	12	18,100
3	Kampong Kandal	HC(NB)	None	0	0	2	1	1	0	4	2	3	9,171
4	Kampong Kraeng	HC	MPA	0	1	0	3	3	0	0	3	14	17,280
5	Koh Touch	HC	MPA	0	1	2	0	0	1	0	2	7	10,477
6	Koun Satv	HC	MPA	0	0	1	3	0	1	1	2	8	12,878
7	Krang Ampil	HC	MPA	0	0	1	2	3	1	8	2	4	12,047
8	Prey Khmum	HC	MPA	0	1	1	0	1	1	7	3	14	17,681
9	Traeuy Koh	HC	MPA	0	0	1	1	2	0	3	2	9	15,999
10	Trapeang Ropov	HC	MPA	0	1	2	1	0	0	0	1	4	8,825
Total:				1	4	18	15	14	5	27	22	90	139,493
Total All				1	8	59	59	37	27	82	97	481	579,954

Source: MEDiCAM – Infrastructure - (http://www.medicam-cambodia.org/hsi/health_system/srch/index.asp?cboLcn=6&cmdSearch=Search&cboCHName=&cboType=)

11.3 Deliveries in 2007 in the Province, by Operational District

OD	Deliveries	Deliveries at home		Deliveries	Total deliveries	Total deliveries
	at HC	By Health Staff	ByTBAs	at RH	by Health Staff	by health staff and TBAs
Angkor Chey	210	1208	762	217	1635	2397
Chhouk	198	1035	608	206	1439	2047
Kampong Trach	662	1051	690	15	1728	2418
Kampot	341	739	1132	616	1696	2828
<i>Sub-total</i>	<i>1411</i>	<i>4033</i>	<i>3192</i>	<i>1054</i>	<i>6498</i>	<i>9690</i>

Source: MoH, Annual Statistics 2007

12 Education³

12.1 Schools, Classes, Students, Staff, for all levels, for 2007/2008 by District

District	Number of Schools	Disadv. Schools	Number of Classes	Classes in Pagoda	Enrollment		Repeaters		Teaching Staff		Non-Teaching Staff		Total Staff	
					Total	Girl	Total	Girl	Total	Female	Total	Female	Total	Female
Angkor Chey	86	3	617	0	22,081	10,287	1,304	480	801	401	134	25	935	426
Banteay Meas	90	0	624	2	23,374	10,561	1,474	555	691	272	167	28	858	300
Chhouk	70	2	555	9	23,466	11,106	804	337	591	199	108	15	699	214
Chum kiri	35	0	327	8	13,616	6,547	1,000	457	279	75	76	15	355	90
Dangtung	38	2	353	0	15,544	7,138	1,248	520	317	98	81	5	398	103
Kampong Bay	22	0	246	0	9,445	4,374	493	170	323	192	61	21	384	213
Kampong Trach	63	2	566	4	24,082	10,857	2,336	925	563	170	116	8	679	178
Kampot	77	0	603	10	23,811	11,334	1,631	641	613	284	137	35	750	319
Whole Province	481	9	3,891	33	155,419	72,204	10,290	4,085	4,178	1,691	880	152	5,058	1,843
- Urban Area	22	0	246	0	9,445	4,374	493	170	323	192	61	21	384	213
- Rural Area	459	9	3,645	33	145,974	67,830	9,797	3,915	3,855	1,499	819	131	4,674	1,630

12.2 Characteristics of Schools and School Principals for 2007/2008 by Commune

Commune	Number of Schools				2 - Shift	Floating	Schools	Attached	Schools Without		Characteristics of School Principals (Incharge)			
	Pre-Sch	Primary	College	Lycee	Schools	Schools	in Pagoda	Pre-Sch	Water Sup.	Latrine	Avg. Age	Avg. Service	U.Sec+ Ed.	Female
Kampong Kandal	4	4	1	0	3	0	0	3	4	2	48.6	26.1	3	6
Krang Ampil	1	2	0	0	1	0	1	1	0		53.4	27.0	0	0
Kampong Bay	1	1	0	0	0	0	0	1	0		43.2	23.0	2	0
Andoung Khmer	2	3	0	1	3	0	3	2	3		51.4	26.0	1	2
Traeuy Kaoh	0	2	0	0	2	0	1	0	1		52.3	27.0	0	0

³ All the data for section 12 comes from the Ministry of Education, Youth and Sport (MoEYS)

12.3 Enrolment by Level of Education, 2006/2007 by Commune

Commune	School	Pre school		Primary School		Lower Secondary School		Upper Secondary School		Enrolment	
		Total	Female	Total	Female	Total	Female	Total	Female	Total	Female
Kampong Kandal	9	181	81	1548	717	1816	888	0	0	3545	1686
Krang Ampil	3	22	13	420	190	0	0	0	0	442	203
Kampong Bay	2	67	36	650	290	0	0	0	0	717	326
Andoung Khmer	6	67	36	1443	648	1145	527	1739	752	4394	1963
Traeuy Kaoh	3	20	11	1002	468	0	0	0	0	1022	479

12.4 Enrolment by Level of Education, 2007/2008 by Commune

Commune	School	Pre school		Primary School		Lower Secondary School		Upper Secondary School		Enrolment	
		Total	Female	Total	Female	Total	Female	Total	Female	Total	Female
Kampong Kandal	9	128	60	1426	658	1583	770	0		3137	1488
Krang Ampil	3	21	9	400	184	0	0	0		421	193
Kampong Bay	2	37	19	594	272	0	0	0		631	291
Andoung Khmer	6	60	35	1325	614	1091	493	1860	822	4336	1964
Traeuy Kaoh	2	0	0	920	438	0	0	0		920	438

12.5 Aspects of Enrolment for 2007/2008 by Commune

Commune	% Repeaters (Total)			% Over-age Enrollment (Total)			% Repeaters (Girl)			% Over-age Enrollment (Girl)		
	Primary	L.Sec.	U.Sec.	Primary	L.Sec.	U.Sec.	Primary	L.Sec.	U.Sec.	Primary	L.Sec.	U.Sec.
Kampong Kandal	4.1	2.9	0.0	15.4	25.0	0.0	2.4	0.8	0.0	12.3	22.6	0.0
Krang Ampil	8.5	0.0	0.0	13.8	0.0	0.0	7.1	0.0	0.0	10.9	0.0	0.0
Kampong Bay	7.1	0.0	0.0	22.4	0.0	0.0	5.9	0.0	0.0	24.6	0.0	0.0
Andoung Khmer	13.4	1.0	1.1	22.1	42.9	35.8	11.1	0.6	0.7	20.0	36.7	29.2
Traeuy Kaoh	11.1	0.0	0.0	23.9	0.0	0.0	9.6	0.0	0.0	24.7	0.0	0.0

12.6 School Buildings for all schools in the District for 2007/2008, by Commune

Commune	Total Number of		Concrete/Brick Structure		Wooden Structure		Bamboo Structure		New Buildings		Buildings Without Good		
	Buildings	Rooms	Buildings	Rooms	Buildings	Rooms	Buildings	Rooms	Repaired	Constructed	Floor	Roof	Wall
Kampong Kandal	15	81	14	80	1	1	0	0	0	2	2	2	1
Krang Ampil	4	15	3	12	1	3	0	0	0	0	1	2	2
Kampong Bay	8	35	8	35	0	0	0	0	0	0	0	0	0
Andoung Khmer	18	94	17	93	1	1	0	0	0	0	8	5	0
Traeuy Kaoh	4	19	4	19	0	0	0	0	0	0	0	0	0

12.7 Conditions of Classrooms and Existence of Separate School Office and Library, by Commune

Commune	Number of Class rooms	Number of Classrooms			Classrooms Without Good			Number of Furniture needed				Schools with Separate	
		in Pagoda	New Repaired	New Constr.	Floor	Roof	Wall	Desks	Chairs	Black-board	Teacher Table	Office	Library
Kampong Kandal	53	0	0	20	9	10	8	20	0	0	0	6	5
Krang Ampil	12	0	0	0	3	4	7	20	20	0	2	2	2
Kampong Bay	20	0	0	0	0	0	0	20	20	0	4	1	1
Andoung Khmer	64	0	0	0	23	7	0	50	0	0	3	3	3
Traeuy Kaoh	16	0	0	0	0	0	0	0	0	0	0	1	1

12.8 Community Participation and Financing across all schools in the District for 2007/2008 by Commune

Commune	Parent Association				Comm. Teachers	Teaching Monks	PAP Fund (Riel)		Number of Schools Obtaining Funds from				
	Exists	Held Meet	Total	Female			per Student	per School	Sch. Income	Community	Gvt. For building	Abroad	IOs/NGOs
Kampong Kandal	8	7	7	3	0	0	13,240	5,567,513	0	2	0	1	0
Krang Ampil	3	3	6	2	0	0	11,024	2,315,000	0	0	0	0	0
Kampong Bay	2	2	7	2	0	0	9,342	3,036,000	0	1	0	0	0
Andoung Khmer	6	6	11	3	0	0	14,591	13,267,100	0	0	0	0	0
Traeuy Kaoh	2	2	12	3	0	0	8,267	4,142,000	0	0	0	0	0

12.9 Percentage Student Flow Rates and Graduation by level 2006/2007, by Commune

Commune	Primary Level (Grades 1-6)			Lower Secondary Level (Grades 7-9)			Upper Secondary Level (Grades 10-12)			Successful Candidates		
	Promotion	Repetition	Dropout	Promotion	Repetition	Dropout	Promotion	Repetition	Dropout	Grade 6	Grade 9	Grade 12
Kampong Kandal	89.9	3.8	6.3	84.9	2.5	12.6	0.0	0.0	0.0	237	512	0
Krang Ampil	86.7	8.1	5.2	0.0	0.0	0.0	0.0	0.0	0.0	60	0	0
Kampong Bay	89.5	6.5	4.0	0.0	0.0	0.0	0.0	0.0	0.0	119	0	0
Andoung Khmer	79.1	12.3	8.6	81.4	1.0	17.6	79.8	1.2	19.0	178	263	349
Traeuy Kaoh	79.2	10.2	10.6	0.0	0.0	0.0	0.0	0.0	0.0	124	0	0

13 Staff and Resources at the District

This chapter presents data from the District Information System, collected around the middle of 2009 unless otherwise specified.

13.1 District Councilors elected in 2009

Name	Sex	Year of Birth	Function	Phone
អ៊ឹង ឡឹង	M	1950	Chairperson of The Council	089-790 728
ទី យ៉ម	M	1952	Councillor	017-596 235
ស៊ី ហយ	M	1952	Councillor	011-380 208
កែវ ចក់	M	1953	Councillor	011-843 162
ព្រំ ពៅ	M	1948	Councillor	016-886 605
មិន ធន	M	1960	Councillor	016-946 423
មួង ធី	M	1953	Councillor	011-843 144
ណុប ខេង	M	1950	Councillor	092-823 434
ហុង ឃួយ	M	1950	Councillor	011-843 135
នាង គឹមជួ	F	1950	Councillor	011-735 047
យក់ សម្បត្តិ	M	1971	Councillor	012-377 737
នាក់ ងឹម	F	1949	Councillor	012-292 146
ហេង សំបួរ	M	1969	Councillor	097-662 4571

13.2 Committees of the Council

Please note at the time of producing the district data books the composition of the committees was not known for all district councils and therefore data were not available for 13.2.1, 13.2.2, 13.2.3.

13.2.1 Technical Facilitation Committee

13.2.2 Women's and Children's Affairs Committee

13.2.3 Procurement Committee

13.3 Board of Governors

Name	Sex	DoB	Function	Salary Level	Body	Phone
នាក់ សុវណ្ណារី	M	1964	Municipality governor	ក៣-១១	High Ranking Civil Servant	012-820 446
ឆាយ វណ្ណារី	M	1959	Municipality deputy governor	ខ២-៦	Medium Civil Servant	012-624 975
កើ មានស៊ី	F	1955	Municipality deputy governor	ខ២-៩	Medium Civil Servant	012-326 345
យ៉ឿន កាត់	M	1966	Municipality deputy governor	ខ៣-៩	Medium Civil Servant	011-516 676

13.4 Offices under Sala Krong, Sala Srok and Sala Khan

Office Name	Chief		Deputy Chief		No. of Staff				Office Area (m2)	No of vehicle (public or program)	
					State		Contract				
	M	F	M	F	M	F	M	F		vehicle	moto
Adminnistration Office	1	0	1	0	2	0	0	0	0	0	0
Economy Office	0	1	0	1	2	0	0	0	0	0	0
Social Affair Office	0	0	0	1	3	0	0	0	0	0	0

13.5 Municipality/District/Khan line offices

Office Name	Chief		Deputy Chief		No. of Staff				Office Area (m2)	No of vehicle (public or program)	
					State		Contract				
	M	F	M	F	M	F	M	F		vehicle	moto
District/ Khan Police Headquarter	1	0	5	0	79	5	0	0	592	0	2
District/ Khan Military Police Headquarter	1	0	1	0	32	0	0	0	Borrow	0	4
District/ Khan Military Subregion	1	0	2	0	10	1	0	0	151.5	0	0
Environment Office	1	0	1	0	0	0	0	0	Borrow	0	0
Education Office	1	0	2	1	2	3	0	0	110	0	0
District/ Khan Operational Office	1	0	2	0	32	33	4	3	0	2	7
Agriculture Office	1	0	1	0	4	3	0	0	200	0	0
Social Affairs Office	1	0	1	0	0	0	1	0	16	0	0
Culture Office	1	0	1	1	0	0	0	0	Borrow	0	0
Cult and Religion Office	1	0	0	0	0	0	0	0	Borrow	0	0
Information Office	1	0	0	0	1	1	0	0	Borrow	0	0
Public Work Office	1	0	1	0	7	1	0	0	Borrow	0	0
Lan Management Office	1	0	2	0	2	0	0	0	176	0	0
Tax Unit	1	0	2	0	4	0	0	0	77	0	0
Industry Office	1	0	1	0	0	0	0	0	Borrow	0	0

13.6 Properties and Equipment of District Administration

13.6.1 Buildings

Description	Unit	Number	Remark
Office building type			
- Concrete	building	0	
- Wood	building	0	
- Mixed	building	1	
Total floor space	m2		
- Concrete	m2	0	
- Wood	m2	0	
- Mixed	m2	1,157	
Building condition			
- Concrete	%	0	
- Wood	%	0	
- Mixed	%	0	
Office reserved land area	m2	0	
Total office land area	m2	626.04	

13.6.2 Means of Transport available at the District Administration

Description	Unit	Number	Remark
Vehicle (type, size and condition)	Vehicle	0	
Motorcycle (type, size and condition)	Motor	0	

13.6.3 Equipment in District Offices

Description	Unit	Number	Remark
Generator	per set	0	
Photocopy machine at the office	per set	0	
Private photocopy machine at the district town	place	7	
Telephone network (mobile line service)	network	0	
Telephone network (land line service)	network	1	
Fax (include Fax number)	per set	0	
Computer	per set	3	
Printer	per set	3	
Scanner	Per set	1	
Number of computers those can access Internet and email services in the municipality/ district/khan office (including the technical line offices (please provide the email address)	set	2	
Typewriters (including the technical line offices)	per set	1	
Staff of Municipality/district/khan office can use computer	person	6	

13.6.4 Equipment and facilities at the District Town

Description	Unit	Number	Remark
Availability of electricity at noon	Nr Hours	12	
Private internet and email services in the municipality/ district/khan town.	place	4	

13.7 Registered Revenue of the District Administration in 2008⁴

Sources of Revenue	Revenue Collecting Agency	Estimated annual revenue (In Riels)
Tourism	Provincial Department of Tourism	2,947,000
Taxes	District/ Khan Taxation Unit	275,182,379

13.8 Services in the District

13.8.1 Public Sector Services

Type of Infrastructure/services	Unit	Number	
		Public	Private
Schools			
Pre-school	room	11	0
Primary School	room	95	0
Secondary school	room	41	0
High School	room	22	0
University	room	0	45
Health			
Health post	place		
Health center	place	3	0
Referral Hospital	bed	155	0

13.9 Civil Society Organizations active in the District

13.9.1 NGOs, Associations, Programs and Projects

Name	Abbr.	Sector Activities	No. of Target Communes	No. of Target Villages	Office in District
NA	NA	សិទ្ធិមនុស្សទំនាស់ដីធ្លី	0	0	Yes
NA	NA	សិទ្ធិមនុស្ស	0	0	Yes
NA	KTMSODC	ជួយថែទាំគាំទ្រដល់ថែទាំកុមារកំព្រា	0	0	Yes
NA	EPICART	គាំទ្រនិងលើកស្ទួយជនពិការ	0	0	Yes
NA	ILOIPEC	ការពារមនុស្សកុមារ	0	0	Yes
NA	CHC	ធនាគារប្រាក់កម្ចី	5	15	Yes
NA	KWCD	ថែទាំសុខភាពអ្នកផ្ទុកមេរោគអេដស៍	5	15	Yes
NA	LECADO	សិទ្ធិមនុស្ស	0	0	Yes
NA	ADHOC	សិទ្ធិមនុស្ស	0	0	Yes
NA	AFD	ថែទាំអ្នកផ្ទុកមេរោគអេដស៍	0	0	Yes
NA	CWDCC	គាំទ្រជនក្រីក្រនិងអ្នកផ្ទុក	0	0	Yes

⁴ Please note that the data in this table are at best estimates. If the table appears blank it does not mean there is no revenue, just that the data have not been recorded/entered.

13.9.2 Political Parties active in the Municipality, District and Khan

Name	Abbr.	Office in District
Cambodian People Party	CPP	Yes
FUNCINPEC Party	FUNCINPEC	Yes
Human Rights Party	HRP	Yes
NRP	NRP	Yes
SAM RAINSY Party	Sam Rainsy Party	Yes

13.10 Private Sector Organizations

13.10.1 Registered Companies in 2008, by District

On private sector at commune and/or district level	KAM	Angkor Chey	Banteay Meas	Chhuk	Chumkiri	Dong Tong	Kampong Trach	Teuk Chhou	Kampot
Businesses and Companies									
Number of registered agricultural enterprises (except family farms)	3	0	0	1	1	0	0	0	1
Number of registered shops, restaurants, transporters and other services	1,240	202	221	262	40	12	319	20	164
Number of manufacturing companies	49	1	0	10	0	5	6	12	15
Number of registered forestry enterprises	35	0	2	21	0	0	0	3	9
Number of registered mining companies	22	0	0	2	0	1	6	8	5
Number of financial institutions	33	4	4	5	0	1	4	7	8
Number of other commercial institutions	124	1	0	85	0	0	33	0	5
Estimated number of informal enterprises (not registered)	85	n/a	10	2	n/a	n/a	n/a	3	70
Employment									
Number of people employed in 2008 by companies or any other enterprises	14,035	4,189	2,368	1,252	612	373	3,039	1,171	1,031
Investment									
Amount invested in 2008 by private sector	1,353,902,696	1,000	10,000	11,267	n/a	12,429	n/a	1,345,000,000	8,868,000
Markets									
Number of markets, operating at least weekly	41	7	6	3	1	4	12	5	3

Note: These data are not comprehensive as different companies and business are registered with different departments and not all departments were able or willing to provide detailed information. The number of informal enterprises reflects a rough estimate, made at provincial level and could not be verified.

Source: Unofficially collected at Provincial Level

13.10.2 Farmers in 2008, by District

Credit	KAM	Angkor Chey	Banteay Meas	Chhuk	Chumkiri	Dong Tong	Kampong Trach	Teuk Chhou	Kampot
Volume of credit provided to farmers in 2008	13,572,052	244,980	2,639,732	3,787,185	969,207	311,990	3,057,112	1,320,846	1,241,000
Number of farmers receiving credit in 2008	30,406	2,355	6,984	9,158	1,845	1,369	3,134	4,658	903
Volume of credit provided to companies in 2008	8,611,000	1,497,000	n/a	n/a	n/a	n/a	n/a	n/a	7,114,000

Note: Please note that these data are not necessarily complete or correct. The data are derived from government agencies at provincial and district level which used different recording systems, did not always have complete data or were, sometimes, less than willing to share their data.

Source: Unofficially collected at Provincial Level

SECTION E: POVERTY DATA

14 Data on Poverty

14.1 Predicted Poverty Rates for 2009, by commune

The **Predicted Family Poverty Rate** is based on a statistical model (robust multilevel mixed effect regression) at village level developed by the NCDD M&E Unit and uses CDB data for making an estimate of the predicted poverty rate (this is: *the portion of total families in the district or commune who are expected to be poor*) for the following year using current year data.

The basis for this predicted poverty rate also uses IDPoor (a project of the Ministry of Planning with technical assistance provided by GTZ) data

Commune	2004	2009
Kampong Kandal	3.20%	0%
Krang Ampil	4.90%	0.90%
Kampong Bay	0%	0%
Andoung Khmer	18.90%	10.70%
Traeuy Kaoh	26.30%	17.70%

14.2 Poverty data from survey

14.2.1 Identification of Poor Households Program (IDPoor)

The Ministry of Planning IDPoor Program has developed standardized Procedures for Identification of Poor Households in rural areas. These Procedures are implemented using a participatory and consultative process by sub-national government structures and community representatives.

The IDPoor Program is managed by the Ministry of Planning (MOP), in cooperation with the Ministry of Interior's Department of Local Administration (DOLA). The program is supported by the Federal Republic of Germany, with technical assistance provided by German Technical Cooperation (GTZ). In 2009, AusAID also provided funding support to the Program.

Objective

The IDPoor Program aims to implement the Procedures for Identification of Poor Households in rural areas as widely as possible, in order to provide data on the level of poverty of areas and households that can be used by a large range of institutions and organizations for targeting services and development assistance to poor areas and poor households.

Coverage: During 2007, 2008 and 2009 the IDPoor Procedures have been implemented in 18 provinces (with partial or complete coverage), covering a total of around 7000 rural villages. The MOP and a number of NGO partners who are Health Equity Fund Operators have collaborated in collecting this data from different areas.

Categorization: Identified poor households are classified under two poverty categories: Poor Level 1 (very poor), and Poor Level 2 (poor). Households are classified based on data collected using a standard questionnaire, together with consideration by villagers of these households' special circumstances.

Further information: Please go to the IDPoor Program webpage at www.mop.gov.kh/Projects/IDPoor/tabid/154/Default.aspx

This District has not yet been covered by IDPoor